

SPEC SHEET + MEASUREMENTS

PORT AUTHORITY.

Port Authority® Women's Northwest Slicker. L7710

Product photo



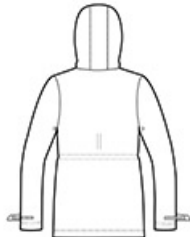
We reinvented our classic rain jacket with this critically seam-sealed slicker that features water resistance, a soft hand feel and reflective details for enhanced visibility and a modern look.

- 100% PU-coated polyester
- 100% polyester mesh-lined body and hood
- 100% polyester-lined sleeves
- 1500MM fabric waterproof rating
- Attached hood with adjustable locking drawcord
- Molded zipper
- Grommets for breathability under arms
- Longer length with adjustable locking drawcord waist
- Adjustable self-fabric tab cuffs with hook and loop closures and reflective detail
- Front zippered pockets with reflective detail
- Port Pocket™ for decoration access
- Open hem with adjustable locking drawcord
- Reflective details at back

Sketches



front



back

CARE INSTRUCTIONS

Machine wash cold. Only non-chlorine bleach when needed. Line dry. Do not iron. Do not dry clean.

SPEC SHEET + MEASUREMENTS

PORT AUTHORITY

Port Authority® Women's Northwest Slicker. L7710

PRODUCT MEASUREMENTS

	XS	S	M	L	XL	XXL	3XL	4XL
Size	2	4/6	8/10	12/14	16/18	20/22	24/26	28/30
Bust	19 1/4	20 1/4	21 1/4	22 3/4	24 1/4	25 3/4	27 3/4	29 3/4
Body Length at Back	28	28 1/2	29	29 1/2	30	30 1/2	31	31 1/2
Sleeve Length from Center Back	32 1/2	33	33 1/2	34 1/8	34 3/4	35 3/8	35 3/4	36 1/8

Bust: Measured across the chest one inch below armhole when laid flat.

Body Length at Back: Measured from high point shoulder to finished hem at back.

Sleeve Length from Center Back: Measure from Center Back neck to shoulder point to sleeve hem.

SIZE CHARTS

	XS	S	M	L	XL	XXL	3XL	4XL
Size	2	4/6	8/10	12/14	16/18	20/22	24/26	28/30
Bust	32-34	35-36	37-38	39-41	42-44	45-47	48-51	52-55

SPEC SHEET + MEASUREMENTS

PORT AUTHORITY.

Port Authority® Women's Northwest Slicker. L7710

HOW TO MEASURE



BUST

Measure under the arm and around the fullest part of the bust with arms down, keeping tape horizontal.

COLORS



Black
PMS BLACK
C



Navy
PMS 532C



Northern Grey
PMS 424C