

## SPEC SHEET + MEASUREMENTS



Russell Outdoors™ Realtree® Atlas Soft Shell Vest.

RU603

### Product photo



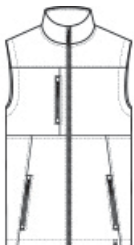
Modern, lightweight and ideal as a work-to-play outer layer for those who love hiking and time in the outdoors. Brushed fleece interior is perfect for layering over a tee on a cool spring morning or crisp fall day.

- 8.4-ounce, 100% polyester with TPU laminate and brushed fleece interior
- Durable water repellent (DWR) finish
- 5K/5K weather protection
- Realtree EDGE® print
- Chest pocket and zippered hand pockets with molded zippers and brushed metal pulls
- Exterior embossed faux leather tab at hem

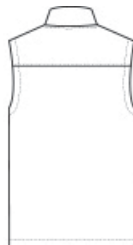
### CARE INSTRUCTIONS

Machine Wash Cold. Do Not Use Softener. Only Non-Chlorine Bleach When Needed. Tumble Dry Low. Do Not Iron. Do Not Dry Clean.

### Sketches



front



back

# SPEC SHEET + MEASUREMENTS



## Russell Outdoors™ Realtree® Atlas Soft Shell Vest. RU603

### PRODUCT MEASUREMENTS

	XS	S	M	L	XL	2XL	3XL	4XL
Body Length at Back	27	28	29	30	31	32	32 1/2	33
Chest Width	19	20 1/2	22	23 1/2	25	26 1/2	28 1/2	30 1/2

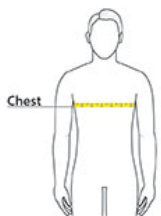
**Body Length at Back:** Measured from high point shoulder to finished hem at back.

**Chest Width:** Measured across the chest one inch below armhole when laid flat.

### SIZE CHARTS

	XS	S	M	L	XL	2XL	3XL	4XL
Chest	32-34	35-37	38-40	41-43	44-46	47-49	50-53	54-57

### HOW TO MEASURE



#### CHEST

Measure under the arm and around the fullest part of the chest with arms down, keeping tape horizontal.

## SPEC SHEET + MEASUREMENTS



Russell Outdoors™ Realtree® Atlas Soft Shell Vest.

RU603

### COLORS

---



Realtree Edge  
PMS  
PATTERNED