

# SPEC SHEET + MEASUREMENTS

PORT AUTHORITY

## Port Authority® Long Sleeve Nailhead Easy Care Shirt. W816

### Product photo



Elevate your business-casual vibe with a budget-friendly shirt that's polished and professional. The subtle two-color nailhead pattern adds a touch of refinement.

- 4-ounce, 60/40 cotton/recycled polyester
- Easy care
- Button-down collar
- Left chest pocket
- Center back pleat
- Dyed-to-match pearlized buttons
- Rounded adjustable barrel cuffs

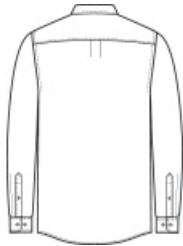
### CARE INSTRUCTIONS

Machine Wash Cold With Like Colors. Do Not Bleach. Tumble Dry Low. Remove Promptly. Cool Iron If Necessary.

### Sketches



front



back

# SPEC SHEET + MEASUREMENTS

PORT AUTHORITY

## Port Authority® Long Sleeve Nailhead Easy Care Shirt. W816

### PRODUCT MEASUREMENTS

	XS	S	M	L	XL	2XL	3XL	4XL
Body Length at Back	29	30	31	32	33	34	34 1/2	35
Chest Width	20	21 1/2	23	24 1/2	26	27 1/2	29 1/2	31 1/2
Sleeve Length from Center Back	34 3/8	35	35 5/8	36 1/4	36 7/8	37 1/2	38 1/4	39
Neck Circumference	16 3/4	16 3/4	17 1/4	17 3/4	18 3/4	19 1/2	20 1/4	21
Chest Pocket Height	5	5	5 1/4	5 1/4	5 1/4	5 1/4	5 1/4	5 1/2
Chest Pocket Width	4 3/8	4 3/8	4 5/8	4 5/8	4 5/8	4 5/8	4 5/8	4 7/8

**Body Length at Back:** Measured from high point shoulder to finished hem at back.

**Chest Width:** Measured across the chest one inch below armhole when laid flat.

**Sleeve Length from Center Back:** Measure from Center Back neck to shoulder point to sleeve hem.

**Neck Circumference:** Measure from center of button to end of buttonhole along the center of the collar stand.

**Chest Pocket Height:** Measure from top to bottom at center.

# SPEC SHEET + MEASUREMENTS

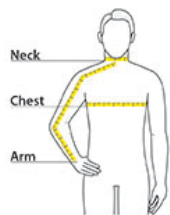
PORT AUTHORITY

Port Authority® Long Sleeve Nailhead Easy Care Shirt.  
W816

## SIZE CHARTS


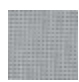



	XS	S	M	L	XL	2XL	3XL	4XL
Chest	32-34	35-37	38-40	41-43	44-46	47-49	50-53	54-57
Neck	14 1/2-15	15-15 1/2	15 1/2-16	16-16 1/2	16 1/2-17	17-17 1/2	17 1/2-18	18-18 1/2
Arm	30 1/2	32	34	35	36 1/2	37 1/2	38 1/2	39 1/2

## HOW TO MEASURE



**Neck** Measure around the fullest part of the neck at the base.  
**Chest Width** Measure under the arm and around the fullest part of the chest with arms down, keeping tape horizontal. **Arm** Place hand on hip. Start at the center of the back of the neck and measure across the shoulder, to the elbow, and then down to the wrist.

## COLORS

				
Deep Black PMS BLACK C	Gusty Grey PMS COOL GRAY 8C	Mediterranean Blue PMS 7686C	Swiss Blue PMS 2121C	White