

SPEC SHEET + MEASUREMENTS

SPORT-TEK

Sport-Tek® PosiCharge® Competitor™ Polo. ST550

Product photo



Our #1 performance tee fabric—offered in a color-locking, moisture-wicking polo—to expand your uniforming options.

- 3.8-ounce, 100% polyester interlock with PosiCharge technology
- Flat knit collar
- Removable tag for comfort and relabeling
- Taped neck
- 3-button placket with dyed-to-match buttons
- Set-in, open hem sleeves

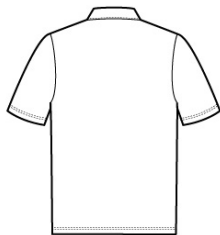
CARE INSTRUCTIONS

Machine wash cold with like colors. Only non-chlorine bleach. When needed tumble dry low, remove promptly. Cool iron if needed. Do not use softener. Do not dry clean.

Sketches



front



back

SPEC SHEET + MEASUREMENTS

SPORT-TEK

Sport-Tek® PosiCharge® Competitor™ Polo. ST550

PRODUCT MEASUREMENTS

	XS	S	M	L	XL	2XL	3XL	4XL
Body Length at Front	28	29	30	31	32	33	33 1/2	34
Chest	18 1/2	20	21 1/2	23	24 1/2	26	28	30
Sleeve Length	17 3/4	18 1/2	19 1/4	20	20 3/4	21 1/2	22 1/4	23

Body Length at Front: Measure from high point shoulder to lowest point of hem at front.

Chest: Measured across the chest one inch below armhole when laid flat.

Sleeve Length: Start at center of neck and measure down shoulder, down sleeve to hem.

SIZE CHARTS

	XS	S	M	L	XL	2XL	3XL	4XL
Chest	32-34	35-37	38-40	41-43	44-46	47-49	50-53	54-57

HOW TO MEASURE



CHEST

Measure under the arm and around the fullest part of the chest with arms down, keeping tape horizontal.

SPEC SHEET + MEASUREMENTS

SPORT-TEK

Sport-Tek® PosiCharge® Competitor™ Polo. ST550

COLORS

							
Atomic Blue PMS 2203C	Black PMS BLACK C	Carolina Blue PMS 7454C	Deep Orange PMS 173C	Deep Red PMS 201C	Forest Green PMS 553C	Gold PMS 1235C	Iron Grey PMS 7540C
							
Kelly Green PMS 341C	Maroon PMS 504C	Purple PMS 7672C	Silver PMS 429C	True Navy PMS 533C	True Red PMS 200C	True Royal PMS 7687C	White