

SPEC SHEET + MEASUREMENTS



OGIO® Women's Connection Anorak. LOG706

Product photo



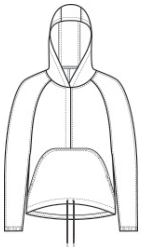
Sleek, modern and built for movement, this weather-resistant OGIO look easily takes you from home to the office to everywhere in-between.

- 92/8 poly/spandex with durable water-repellent (DWR) finish
- OGIO heat transfer label for tag-free comfort
- Metal center front zipper
- Cinch waist with tipped elastic drawcords for adjustability
- Woven OGIO label on left pocket

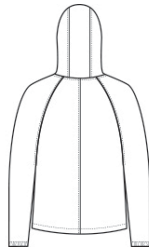
CARE INSTRUCTIONS

Machine Wash Cold. Do Not Use Fabric Softener. Non-Chlorine Bleach When Needed. Tumble Dry Low. Cool Iron If Necessary. Do Not Dry Clean.

Sketches



front



back

SPEC SHEET + MEASUREMENTS



OGIO® Women's Connection Anorak. LOG706

PRODUCT MEASUREMENTS

	XS	S	M	L	XL	2XL	3XL	4XL
Size	2	4/6	8/10	12/14	16/18	20/22	24/26	28/30
Body Length at Back	26 1/2	27	27 1/2	28	28 1/2	29	29 1/2	30
Bust	22 3/4	23 3/4	24 3/4	26 1/4	27 3/4	29 1/4	31 1/4	33 1/4
Sleeve Length from Center Back	31 1/2	32	32 1/2	33 1/8	33 3/4	34 3/8	34 3/4	35 1/8

Body Length at Back: Measured from high point shoulder to finished hem at back.

Bust: Measured across the chest one inch below armhole when laid flat.

Sleeve Length from Center Back: Measure from Center Back neck to shoulder point to sleeve hem.

SIZE CHARTS

	XS	S	M	L	XL	2XL	3XL	4XL
Size	2	4/6	8/10	12/14	16/18	20/22	24/26	28/30
Bust	32-34	35-36	37-38	39-41	42-44	45-47	48-51	52-55

SPEC SHEET + MEASUREMENTS



OGIO® Women's Connection Anorak. LOG706

HOW TO MEASURE



BUST

Measure under the arm and around the fullest part of the bust with arms down, keeping tape horizontal.

COLORS



Blacktop
PMS Black C