



New Era® STS 1/4-Zip Hoodie NEA541

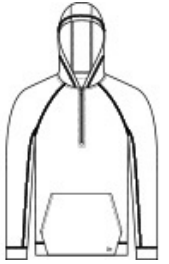


A modern twist on heritage style, this hoodie is a perfect layering piece with its smooth face, jacquard interior and pique-like texture.

- 7.8-ounce, 56/44 cotton/poly double knit jacquard
- Heat transfer label for tag-free comfort
- Metaluxe® zipper
- Patch pocket
- Embroidered New Era flag logo on pocket

CARE INSTRUCTIONS

Machine Wash Cold With Like Colors. Do Not Use Fabric Softener. Do Not Bleach. Tumble Dry Low. Remove Promptly. Cool Iron If Necessary.

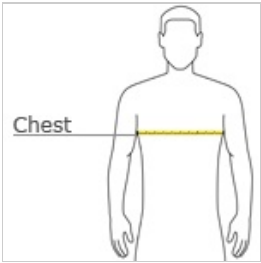


front



back

HOW TO MEASURE



CHEST WIDTH

Measure under the arm and around the fullest part of the chest with arms down, keeping tape horizontal.

SIZE CHART

	XS	S	M	L	XL	2XL	3XL	4XL
Chest	32-34	35-37	38-40	41-43	44-47	48-51	52-56	57-61

COLOR INFORMATION

Please note: PMS code information is shown only when an exact match is available.



Black
PMS BLACK C



Fan White



Graphite
PMS 7540C