

## SPEC SHEET + MEASUREMENTS



### OGIO® Women's Transcend Pullover. LOG863

#### Product photo

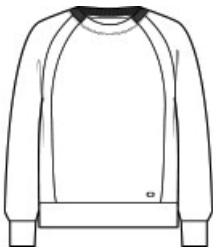


Transcend the line between work and leisure. With ultra soft double-knit and stretch, this sueded pullover is as cozy and comfortable as it is polished.

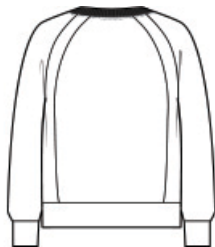
- 9.1-ounce, 50/44/6 rayon/recycled polyester/spandex double-knit fleece
- Half self-fabric, half rib knit collar
- Stretch back neck taping with OGIO locker loop
- OGIO heat transfer label for tag-free comfort
- Raglan sleeves
- Banded cuffs and hem
- Tonal embroidered O icon on left hem

**Care Instructions** Machine Wash Cold With Like Colors. Do Not Use Fabric Softener. Do Not Bleach. Tumble Dry Low, Remove Promptly. Cool Iron, If Necessary.

#### Sketches



front



back

# SPEC SHEET + MEASUREMENTS



## OGIO® Women's Transcend Pullover. LOG863

### PRODUCT MEASUREMENTS

	XS	S	M	L	XL	2XL	3XL	4XL
Size	2	4/6	8/10	12/14	16/18	20/22	24/26	28/30
Body Length at Back	24 1/2	25	25 1/2	26	26 1/2	27	27 1/2	28
Bust	20 1/2	21 1/2	22 1/2	24	25 1/2	27	29	31
Sleeve Length from Center Back	31	31 1/2	32	32 5/8	33 1/4	33 7/8	34 1/4	34 5/8

**Body Length at Back:** Measured from high point shoulder to finished hem at back.

**Bust:** Measured across the chest one inch below armhole when laid flat.

**Sleeve Length from Center Back:** Measure from Center Back neck to shoulder point to sleeve hem.

### SIZE CHARTS

	XS	S	M	L	XL	2XL	3XL	4XL
Size	2	4/6	8/10	12/14	16/18	20/22	24/26	28/30
Bust	32-34	35-36	37-38	39-41	42-44	45-47	48-51	52-55

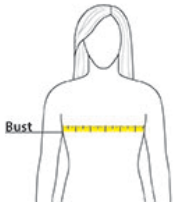
# SPEC SHEET + MEASUREMENTS



OGIO® Women's Transcend Pullover. LOG863

## HOW TO MEASURE

---



### BUST

Measure under the arm and around the fullest part of the bust with arms down, keeping tape horizontal.

## COLORS

---



Ashen Plum



Blacktop  
PMS BLACK  
C



Opal White



Tarmac Grey  
PMS 7540C