

## SPEC SHEET + MEASUREMENTS



### Gildan® Softstyle® Tank Top. 64200

#### Product photo



- 4.5-ounce, 100% ring spun US cotton
- 90/10 ring spun cotton/polyester (Sport Grey)
- High stitch density for a smoother printing surface
- Tubular body
- Semi-fitted
- Recycled, high-performing black tear-away label

Please note: This product is transitioning from tear-away labels to recycled, high-performing black tear-away labels. Your order may contain a combination of both labels.

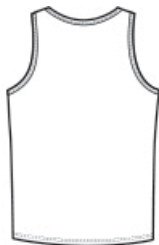
#### **CARE INSTRUCTIONS**

Maximum Washing Temperature 30C. Wash Inside Out With Like Colors. Only Oxygen/Non-Chlorine Bleach Allowed. Tumble Dry At Low Temperature, Max 60 C. Do Not Iron. Do Not Dry Clean.

#### Sketches



front



back

# SPEC SHEET + MEASUREMENTS



Gildan® Softstyle® Tank Top. 64200

## PRODUCT MEASUREMENTS

|                     | S  | M  | L  | XL | 2XL |
|---------------------|----|----|----|----|-----|
| Body Length at Back | 28 | 29 | 30 | 31 | 32  |
| Chest               | 18 | 20 | 22 | 24 | 26  |

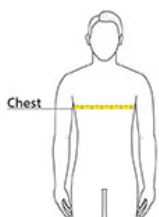
**Body Length at Back:** Measured from high point shoulder to finished hem at back.

**Chest:** Measured across the chest one inch below armhole when laid flat.

## SIZE CHARTS

|       | S     | M     | L     | XL    | 2XL   |
|-------|-------|-------|-------|-------|-------|
| Chest | 34-36 | 38-40 | 42-44 | 46-48 | 50-52 |

## HOW TO MEASURE



### CHEST

Measure under the arm and around the fullest part of the chest with arms down, keeping tape horizontal.

SPEC SHEET + MEASUREMENTS



Gildan® Softstyle® Tank Top. 64200

COLORS

|   |   |   |   |   |  |
|---|---|---|---|---|--|
|  |  |  |  |  |  |
| Black<br>PMS 426C   | Charcoal<br>PMS COOL<br>GRAY 10C  | Navy<br>PMS 533C  | Red<br>PMS 199C   | Sport Grey<br>PMS COOL<br>GRAY 7C   | White  |