

SPEC SHEET + MEASUREMENTS



Volunteer Knitwear™ All-American Long Sleeve Tee. VL100LS

Product photo



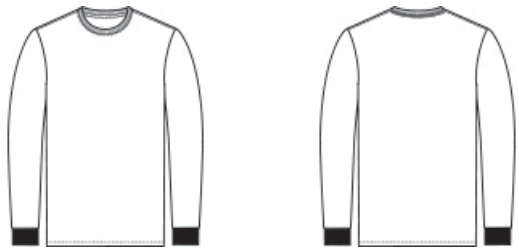
Steady hands. Honest work. This heavyweight tee is forged in one of the last great textile mills in America. It has a bit of grit, and is crafted to be worn everywhere.

- 5.5-ounce, 100% cotton, 20 singles
- 90/10 cotton/poly (Athletic Heather)
- 50/50 cotton/poly (Safety Green, Safety Orange)
- Proudly American made
- 1x1 rib knit neck
- Shoulder to shoulder taping
- Set-in sleeves
- Rib knit cuffs
- Tear-away label

CARE INSTRUCTIONS

Machine Wash Cold Inside Out With Like Colors. Only Non-Chlorine Bleach When Needed. Tumble Dry Low. Do Not Iron.

Sketches



front

back

SPEC SHEET + MEASUREMENTS



Volunteer Knitwear™ All-American Long Sleeve Tee. VL100LS

PRODUCT MEASUREMENTS

	S	M	L	XL	2XL	3XL	4XL
Body Length at Back	29	30	31	32	33	33 1/2	34
Chest Width	19 1/2	21	22 1/2	24	25 1/2	27 1/2	29 1/2
Sleeve Length from Center Back	35	35 3/4	36 1/2	37 1/4	38	38 3/4	39 1/2

Body Length at Back: Measured from high point shoulder to finished hem at back.

Chest Width: Measured across the chest one inch below armhole when laid flat.

Sleeve Length from Center Back: Measure from Center Back neck to shoulder point to sleeve hem.

SIZE CHARTS

	S	M	L	XL	2XL	3XL	4XL
Chest	35-37	38-40	41-43	44-46	47-49	50-53	54-57

SPEC SHEET + MEASUREMENTS



Volunteer Knitwear™ All-American Long Sleeve Tee. VL100LS

HOW TO MEASURE



CHEST

Measure under the arm and around the fullest part of the chest with arms down, keeping tape horizontal.

COLORS



Athletic
Heather



Deep Black
PMS BLACK
C



Grey Steel



Safety Green



Safety Orange



Strong Navy
PMS 533C



True Royal
PMS 7687C



White