



## Test Report

No.T32220271282TC

Date: JUN 09, 2022

Page 1 of 16

IMAGEN BRANDS

401 US HWY 160 DONIPHAN, MO 63935, UNITED STATES

The following samples were submitted and identified by/on behalf of the client as:

DOUBLE WALL STAINLESS STEEL TUMBLER WITH BAMBOO LID AND STRAW

Item No. : CDKW086  
Manufacture Date : 2022  
Shipment Order Number : DP00044053  
Country of Origin : CHINA  
Country of Destination : CANADA, UNITED STATES  
Labeled Age Grading : 0+  
Sample Receiving Date : MAY 24, 2022  
Further Information Date : JUN 07, 2022  
Testing Period : MAY 24, 2022 TO JUN 09, 2022

Test Requested		Conclusion
1.	US FDA General Recognized As Safe (GRAS) Specifications – Total Chromium content in stainless steel	PASS
2.	US 16 CFR Part 1307 – Phthalates	PASS
	US California Proposition 65 (County of Marin Case No. CIV1105882) – Phthalates Content	PASS
3.	Title 16, Code of Federal Regulations, Chapter II - Consumer Products Safety Commission of U.S.A. - Part 1303 - Ban of Lead - Containing Paint and Certain Consumer Products Bearing Lead - Containing Paint – Lead Content	PASS
4.	CPSIA section 101 - Total Lead content	--
4.1	CPSIA section 101(f) (1) – Lead in paint/similar surface coating material	PASS
4.2	CPSIA section 101(a) (2) – Lead in accessible substrate materials (Including Children’s Metal Jewelry)	PASS

This document is issued by the Company subject to its General Conditions of Service printed overleaf, available on request or accessible at <http://www.sgs.com/en/Terms-and-Conditions.aspx> and, for electronic format documents, subject to Terms and Conditions for Electronic Documents at <http://www.sgs.com/en/Terms-and-Conditions/Terms-e-Documents.aspx>. Attention is drawn to the limitation of liability, indemnification and jurisdiction issues defined therein. Any holder of this document is advised that information contained hereon reflects the Company's findings at the time of its intervention only and within the limits of Client's instructions, if any. The Company's sole responsibility is to its Client and this document does not exonerate parties to a transaction from exercising all their rights and obligations under the transaction documents. This document cannot be reproduced except in full, without prior written approval of the Company. Any unauthorized alteration, forgery or falsification of the content or appearance of this document is unlawful and offenders may be prosecuted to the fullest extent of the law.

Unless otherwise stated the results shown in this test report refer only to the sample(s) tested and such sample(s) are retained for 30 days only.



Test Requested		Conclusion
5.	Bisphenol A (BPA) requirement in compliance with various USA States requirement	PASS
6.	The United State Code of Federal Regulations 21 CFR 175.300 (FDA) - extractives in distilled water	PASS
7.	United State Code of Federal Regulations 21 CFR 177.1210 (FDA) - Amount of Net Chloroform Soluble Extractives	PASS
8.	The United State Code of Federal Regulations 21 CFR 177.1520 (FDA) - density, melting point, maximum extractable fraction in n-hexane, and maximum soluble fraction in xylene	PASS
9.	US California Proposition 65 (County of Marin Case No. CIV 1104003) – Lead Content	PASS
10.	Canada Consumer Product Safety Act (S.C. 2010, c. 21), Toys Regulations (SOR/2011-17) amended up to January 11, 2019 (Including amendments SOR/2012-71, SOR/2016-195, SOR/2016-302 and SOR/2018-138) - Section 23 (a) and Section 23 (c) - Lead and Mercury in surface coating material	PASS

\*\*\*\*\* FOR FURTHER DETAILS, PLEASE REFER TO THE FOLLOWING PAGE(S) \*\*\*\*\*

Signed for and on behalf of  
SGS Hong Kong Ltd.



\_\_\_\_\_  
To Man Wah, Po  
Technical Manager

This document is issued by the Company subject to its General Conditions of Service printed overleaf, available on request or accessible at <http://www.sgs.com/en/Terms-and-Conditions.aspx> and, for electronic format documents, subject to Terms and Conditions for Electronic Documents at <http://www.sgs.com/en/Terms-and-Conditions/Terms-e-Documents.aspx>. Attention is drawn to the limitation of liability, indemnification and jurisdiction issues defined therein. Any holder of this document is advised that information contained hereon reflects the Company's findings at the time of its intervention only and within the limits of Client's instructions, if any. The Company's sole responsibility is to its Client and this document does not exonerate parties to a transaction from exercising all their rights and obligations under the transaction documents. This document cannot be reproduced except in full, without prior written approval of the Company. Any unauthorized alteration, forgery or falsification of the content or appearance of this document is unlawful and offenders may be prosecuted to the fullest extent of the law.

Unless otherwise stated the results shown in this test report refer only to the sample(s) tested and such sample(s) are retained for 30 days only.

**Test Results:**
**US FDA General Recognized As Safe (GRAS) Specifications – Total Chromium content in stainless steel**

Method : Acid digestion followed by analysis with Inductively Coupled Argon Plasma – Atomic Emission Spectrometry.

Test Item	Result (%)	Reporting Limit (%)	Requirement
	1		
Chromium (Cr)	16.2	0.005	Not less than 16%
<b>Comment</b>	PASS	--	--

Specimen Description:

1. Silvery metal (Body) (#1-CDKW086 Black Stainless Steel Body, #2-CDKW086 Aqua Stainless Steel Body, #3-CDKW086 White Stainless Steel Body, #4-CDKW086 Navy Stainless Steel Body, #5-CDKW086 Stainless Steel Body)

Note: - % = percentage by weight

**Phthalates Content**

Method: With reference to CPSC-CH-C1001-09.4

Analysis was performed by Gas Chromatography Mass Spectrometer (GC-MS) / High Performance Liquid Chromatography with Mass Spectrometer (HPLC-MS)

Accessible Materials can be placed in the Mouth

Test Item(s)	CAS No.	Result(s) (%)			MDL (%)
		1	2	3	
<b>Specimen No.</b>	--	<b>1</b>	<b>2</b>	<b>3</b>	--
Dibutyl Phthalate (DBP)	84-74-2	ND	ND	ND	0.003
Benzylbutyl Phthalate (BBP)	85-68-7	ND	ND	ND	0.003
Bis-(2-ethylhexyl) Phthalate (DEHP)	117-81-7	ND	ND	ND	0.003
Diisononyl Phthalate (DINP)	28553-12-0 68515-48-0	ND	ND	ND	0.010
Di-n-Hexyl phthalate (DHP/DnHP)	84-75-3	ND	ND	ND	0.003
Diisobutyl phthalate (DIBP)	84-69-5	ND	ND	ND	0.003
Di-n-pentyl phthalate (DPP/DPenP)	131-18-0	ND	ND	ND	0.003
Dicyclohexyl phthalate (DCHP)	84-61-7	ND	ND	ND	0.003

This document is issued by the Company subject to its General Conditions of Service printed overleaf, available on request or accessible at <http://www.sgs.com/en/Terms-and-Conditions.aspx> and, for electronic format documents, subject to Terms and Conditions for Electronic Documents at <http://www.sgs.com/en/Terms-and-Conditions/Terms-e-Documents.aspx>. Attention is drawn to the limitation of liability, indemnification and jurisdiction issues defined therein. Any holder of this document is advised that information contained hereon reflects the Company's findings at the time of its intervention only and within the limits of Client's instructions, if any. The Company's sole responsibility is to its Client and this document does not exonerate parties to a transaction from exercising all their rights and obligations under the transaction documents. This document cannot be reproduced except in full, without prior written approval of the Company. Any unauthorized alteration, forgery or falsification of the content or appearance of this document is unlawful and offenders may be prosecuted to the fullest extent of the law.

Unless otherwise stated the results shown in this test report refer only to the sample(s) tested and such sample(s) are retained for 30 days only.

Test Item(s)	CAS No.	Result(s) (%)			MDL (%)
Specimen No.	--	4	5	6	--
Dibutyl Phthalate (DBP)	84-74-2	ND	ND	ND	0.003
Benzylbutyl Phthalate (BBP)	85-68-7	ND	ND	ND	0.003
Bis-(2-ethylhexyl) Phthalate (DEHP)	117-81-7	ND	ND	ND	0.003
Diisononyl Phthalate (DINP)	28553-12-0 68515-48-0	ND	ND	ND	0.010
Di-n-Hexyl phthalate (DHP/DnHP)	84-75-3	ND	ND	ND	0.003
Diisobutyl phthalate (DIBP)	84-69-5	ND	ND	ND	0.003
Di-n-pentyl phthalate (DPP/DPenP)	131-18-0	ND	ND	ND	0.003
Dicyclohexyl phthalate (DCHP)	84-61-7	ND	ND	ND	0.003

Test Item(s)	CAS No.	Result(s) (%)			MDL (%)
Specimen No.	--	7	8	9	--
Dibutyl Phthalate (DBP)	84-74-2	ND	ND	ND	0.003
Benzylbutyl Phthalate (BBP)	85-68-7	ND	ND	ND	0.003
Bis-(2-ethylhexyl) Phthalate (DEHP)	117-81-7	ND	ND	ND	0.003
Diisononyl Phthalate (DINP)	28553-12-0 68515-48-0	ND	ND	ND	0.010
Di-n-Hexyl phthalate (DHP/DnHP)	84-75-3	ND	ND	ND	0.003
Diisobutyl phthalate (DIBP)	84-69-5	ND	ND	ND	0.003
Di-n-pentyl phthalate (DPP/DPenP)	131-18-0	ND	ND	ND	0.003
Dicyclohexyl phthalate (DCHP)	84-61-7	ND	ND	ND	0.003

Test Item(s)	CAS No.	Result(s) (%)		MDL (%)
Specimen No.	--	10	11	--
Dibutyl Phthalate (DBP)	84-74-2	ND	ND	0.003
Benzylbutyl Phthalate (BBP)	85-68-7	ND	ND	0.003
Bis-(2-ethylhexyl) Phthalate (DEHP)	117-81-7	ND	ND	0.003
Diisononyl Phthalate (DINP)	28553-12-0 68515-48-0	ND	ND	0.010
Di-n-Hexyl phthalate (DHP/DnHP)	84-75-3	ND	ND	0.003
Diisobutyl phthalate (DIBP)	84-69-5	ND	ND	0.003
Di-n-pentyl phthalate (DPP/DPenP)	131-18-0	ND	ND	0.003
Dicyclohexyl phthalate (DCHP)	84-61-7	ND	ND	0.003

This document is issued by the Company subject to its General Conditions of Service printed overleaf, available on request or accessible at <http://www.sgs.com/en/Terms-and-Conditions.aspx> and, for electronic format documents, subject to Terms and Conditions for Electronic Documents at <http://www.sgs.com/en/Terms-and-Conditions/Terms-e-Documents.aspx>. Attention is drawn to the limitation of liability, indemnification and jurisdiction issues defined therein. Any holder of this document is advised that information contained hereon reflects the Company's findings at the time of its intervention only and within the limits of Client's instructions, if any. The Company's sole responsibility is to its Client and this document does not exonerate parties to a transaction from exercising all their rights and obligations under the transaction documents. This document cannot be reproduced except in full, without prior written approval of the Company. Any unauthorized alteration, forgery or falsification of the content or appearance of this document is unlawful and offenders may be prosecuted to the fullest extent of the law.

Unless otherwise stated the results shown in this test report refer only to the sample(s) tested and such sample(s) are retained for 30 days only.

Test Item(s)	CAS No.	Result(s) (%)		MDL (%)
<b>Specimen No.</b>	--	<b>12</b>	<b>13</b>	--
Dibutyl Phthalate (DBP)	84-74-2	ND	ND	0.003
Benzylbutyl Phthalate (BBP)	85-68-7	ND	ND	0.003
Bis-(2-ethylhexyl) Phthalate (DEHP)	117-81-7	ND	ND	0.003
Diisononyl Phthalate (DINP)	28553-12-0 68515-48-0	ND	ND	0.010
Di-n-Hexyl phthalate (DHP/DnHP)	84-75-3	ND	ND	0.003
Diisobutyl phthalate (DIBP)	84-69-5	ND	ND	0.003
Di-n-pentyl phthalate (DPP/DPenP)	131-18-0	ND	ND	0.003
Dicyclohexyl phthalate (DCHP)	84-61-7	ND	ND	0.003

**Specimen Description:**

1. Black coating on metal (Body) (#1-CDKW086 Black Stainless Steel Body)
2. Aqua coating on metal (Body) (#2-CDKW086 Aqua Stainless Steel Body)
3. White coating on metal (Body) (#3-CDKW086 White Stainless Steel Body)
4. Navy coating on metal (Body) (#4-CDKW086 Navy Stainless Steel Body)
5. Transparent lacquer coating on bamboo (Lid) (#6-CDKW086 Bamboo Lid)
6. Translucent silicone rubber (Gasket) (#7-CDKW086 Silicone gasket on lid)
7. Transparent silicone rubber (Gasket) (#8-CDKW086 Transparent plastic on lid)
8. Black plastic (Straw) (#9-CDKW086 Black PP Straw)
9. Aqua plastic (Straw) (#10-CDKW086 Aqua PP Straw)
10. White plastic (Straw) (#11-CDKW086 White PP Straw)
11. Navy plastic (Straw) (#12-CDKW086 Navy PP Straw)
12. Gray plastic (Straw) (#13-CDKW086 Gray PP Straw)
13. Translucent plastic ring (Straw) (#14-CDKW086 Translucent plastic ring on straw)

- Note:
- % = percentage by weight
  - MDL = Method Detection Limit
  - ND = Not Detected (lower than MDL)

**The Phthalates Content Requirement(s) is(are) Summarize as below:**

Requirement(s)	Permissible Limit
<b>US 16 CFR Part 1307</b>	
- Toys for children up to 12 or childcare articles for children up to 3	- DEHP, BBP, DBP, DINP, DIBP, DPENP, DHEXP, and DCHP ≤ 0.1%

This document is issued by the Company subject to its General Conditions of Service printed overleaf, available on request or accessible at <http://www.sgs.com/en/Terms-and-Conditions.aspx> and, for electronic format documents, subject to Terms and Conditions for Electronic Documents at <http://www.sgs.com/en/Terms-and-Conditions/Terms-e-Documents.aspx>. Attention is drawn to the limitation of liability, indemnification and jurisdiction issues defined therein. Any holder of this document is advised that information contained hereon reflects the Company's findings at the time of its intervention only and within the limits of Client's instructions, if any. The Company's sole responsibility is to its Client and this document does not exonerate parties to a transaction from exercising all their rights and obligations under the transaction documents. This document cannot be reproduced except in full, without prior written approval of the Company. Any unauthorized alteration, forgery or falsification of the content or appearance of this document is unlawful and offenders may be prosecuted to the fullest extent of the law.

Unless otherwise stated the results shown in this test report refer only to the sample(s) tested and such sample(s) are retained for 30 days only.

Test Item(s)	CAS No.	Result(s) (%)			MDL (%)
Specimen No.	--	1	2	3	--
Dibutyl Phthalate (DBP)	84-74-2	ND	ND	ND	0.003
Benzylbutyl Phthalate (BBP)	85-68-7	ND	ND	ND	0.003
Bis-(2-ethylhexyl) Phthalate (DEHP)	117-81-7	ND	ND	ND	0.003

Test Item(s)	CAS No.	Result(s) (%)			MDL (%)
Specimen No.	--	4	5	6	--
Dibutyl Phthalate (DBP)	84-74-2	ND	ND	ND	0.003
Benzylbutyl Phthalate (BBP)	85-68-7	ND	ND	ND	0.003
Bis-(2-ethylhexyl) Phthalate (DEHP)	117-81-7	ND	ND	ND	0.003

Test Item(s)	CAS No.	Result(s) (%)		MDL (%)
Specimen No.	--	7		--
Dibutyl Phthalate (DBP)	84-74-2	ND		0.003
Benzylbutyl Phthalate (BBP)	85-68-7	ND		0.003
Bis-(2-ethylhexyl) Phthalate (DEHP)	117-81-7	ND		0.003

**Specimen Description:**

1. Black coating on metal (Body) (#1-CDKW086 Black Stainless Steel Body)
2. Aqua coating on metal (Body) (#2-CDKW086 Aqua Stainless Steel Body)
3. White coating on metal (Body) (#3-CDKW086 White Stainless Steel Body)
4. Navy coating on metal (Body) (#4-CDKW086 Navy Stainless Steel Body)
5. Transparent lacquer coating on bamboo (Lid) (#6-CDKW086 Bamboo Lid)
6. Translucent silicone rubber (Gasket) (#7-CDKW086 Silicone gasket on lid)
7. Transparent silicone rubber (Gasket) (#8-CDKW086 Transparent plastic on lid)

- Note:
- % = percentage by weight
  - MDL = Method Detection Limit
  - ND = Not Detected (lower than MDL)

This document is issued by the Company subject to its General Conditions of Service printed overleaf, available on request or accessible at <http://www.sgs.com/en/Terms-and-Conditions.aspx> and, for electronic format documents, subject to Terms and Conditions for Electronic Documents at <http://www.sgs.com/en/Terms-and-Conditions/Terms-e-Documents.aspx>. Attention is drawn to the limitation of liability, indemnification and jurisdiction issues defined therein. Any holder of this document is advised that information contained hereon reflects the Company's findings at the time of its intervention only and within the limits of Client's instructions, if any. The Company's sole responsibility is to its Client and this document does not exonerate parties to a transaction from exercising all their rights and obligations under the transaction documents. This document cannot be reproduced except in full, without prior written approval of the Company. Any unauthorized alteration, forgery or falsification of the content or appearance of this document is unlawful and offenders may be prosecuted to the fullest extent of the law.

Unless otherwise stated the results shown in this test report refer only to the sample(s) tested and such sample(s) are retained for 30 days only.

**The Phthalates Content Requirement(s) is(are) Summarize as below:**

Requirement(s)	Permissible Limit
California Proposition 65 (County of Marin Case No. CIV1105882)	
<ul style="list-style-type: none"> <li>- Rainwear/apparel</li> <li>- Hardware (including hooks, suction cups, etc)</li> <li>- Squeeze bottles that could contain paint, glue or craft mediums; or empty squeeze bottles intended for use as storage</li> <li>- Jewelry travel cases</li> <li>- Covers/sleeves/handles for books, planners, journals, diaries, and photo albums</li> <li>- Eyelash Curler Bags</li> <li>- Journals and Refills</li> <li>- Pocket Guides</li> <li>- Card Boxes</li> <li>- Pocket Hanging Storages</li> <li>- See-Through Bags</li> <li>- Totes</li> <li>- Needle Cases</li> <li>- Purse Kits</li> <li>- Accessory Bags Sets</li> <li>- Needle Sleeves</li> <li>- Storage containers, such as for scrapbooking, sewing apparel craft, and beading</li> <li>- Décor items, including faux fruit and vegetables, balls, gems, beads, ornaments, floral, greenery, centerpieces, candle rings, table décor, planters</li> <li>- Chairs and chair pads</li> <li>- Mats (sink, tub, auto, welcome, etc)</li> <li>- Vinyl placemats, tablecloths</li> <li>- Vinyl fabric, including faux leather fabric</li> <li>- Photo Albums</li> <li>- Aprons</li> <li>- Covers/cases/bags/cords for mobile electronic devices (e.g. telephones, cameras, MP3 players, CDs/DVDs, videogames, radios, tablets and laptops)</li> <li>- Stickers not intended primarily for use by children aged 12 and under</li> </ul>	<p>≤ 0.1% DEHP, BBP and DBP</p> <p>Remark: For accessible components made of PVC or other soft plastic, vinyl or synthetic leather</p>

This document is issued by the Company subject to its General Conditions of Service printed overleaf, available on request or accessible at <http://www.sgs.com/en/Terms-and-Conditions.aspx> and, for electronic format documents, subject to Terms and Conditions for Electronic Documents at <http://www.sgs.com/en/Terms-and-Conditions/Terms-e-Document.aspx>. Attention is drawn to the limitation of liability, indemnification and jurisdiction issues defined therein. Any holder of this document is advised that information contained hereon reflects the Company's findings at the time of its intervention only and within the limits of Client's instructions, if any. The Company's sole responsibility is to its Client and this document does not exonerate parties to a transaction from exercising all their rights and obligations under the transaction documents. This document cannot be reproduced except in full, without prior written approval of the Company. Any unauthorized alteration, forgery or falsification of the content or appearance of this document is unlawful and offenders may be prosecuted to the fullest extent of the law.

Unless otherwise stated the results shown in this test report refer only to the sample(s) tested and such sample(s) are retained for 30 days only.



**CPSC 16 CFR 1303 - Lead in Paint/Similar Surface Coating Materials**

Method: With reference to CPSC-CH-E1003-09.1 - Standard Operating Procedure for Determining Lead (Pb) in Paint and Other Similar Surface Coatings

Test Item(s)	Lead (Pb)
Permissible Limit (ppm)	90
Specimen Description	Result(s) (ppm)
1. Black coating on metal (Body) (#1-CDKW086 Black Stainless Steel Body)	ND
2. Aqua coating on metal (Body) (#2-CDKW086 Aqua Stainless Steel Body)	ND
3. White coating on metal (Body) (#3-CDKW086 White Stainless Steel Body)	ND
4. Navy coating on metal (Body) (#4-CDKW086 Navy Stainless Steel Body)	ND
5. Transparent lacquer coating on bamboo (Lid) (#6-CDKW086 Bamboo Lid)	ND

- Note:
- ppm = parts per million
  - ND = Not Detected (lower than MDL)
  - MDL = Method Detection Limit = 10 ppm
  - 1% = 10000 mg/kg = 10000 ppm

**CPSIA - Lead in Paint/Similar Surface Coating Materials**

Method: With reference to CPSC-CH-E1003-09.1 - Standard Operating Procedure for Determining Lead (Pb) in Paint and Other Similar Surface Coatings

Test Item(s)	Lead (Pb)
Permissible Limit (ppm)	90
Specimen Description	Result(s) (ppm)
1. Black coating on metal (Body) (#1-CDKW086 Black Stainless Steel Body)	ND
2. Aqua coating on metal (Body) (#2-CDKW086 Aqua Stainless Steel Body)	ND
3. White coating on metal (Body) (#3-CDKW086 White Stainless Steel Body)	ND
4. Navy coating on metal (Body) (#4-CDKW086 Navy Stainless Steel Body)	ND
5. Transparent lacquer coating on bamboo (Lid) (#6-CDKW086 Bamboo Lid)	ND

- Note:
- ppm = parts per million
  - 1% = 10000 mg/kg = 10000 ppm
  - MDL = Method Detection Limit = 10 ppm
  - ND = Not Detected (lower than MDL)

This document is issued by the Company subject to its General Conditions of Service printed overleaf, available on request or accessible at <http://www.sgs.com/en/Terms-and-Conditions.aspx> and, for electronic format documents, subject to Terms and Conditions for Electronic Documents at <http://www.sgs.com/en/Terms-and-Conditions/Terms-e-Documents.aspx>. Attention is drawn to the limitation of liability, indemnification and jurisdiction issues defined therein. Any holder of this document is advised that information contained hereon reflects the Company's findings at the time of its intervention only and within the limits of Client's instructions, if any. The Company's sole responsibility is to its Client and this document does not exonerate parties to a transaction from exercising all their rights and obligations under the transaction documents. This document cannot be reproduced except in full, without prior written approval of the Company. Any unauthorized alteration, forgery or falsification of the content or appearance of this document is unlawful and offenders may be prosecuted to the fullest extent of the law.

Unless otherwise stated the results shown in this test report refer only to the sample(s) tested and such sample(s) are retained for 30 days only.

**CPSIA - Lead in Accessible Substrate Materials**

Method (non-metallic materials): With reference to CPSC-CH-E1002-08.3 - Standard Operation Procedure for Determining Total Lead (Pb) in Non-Metal Children Product

Method (metal materials): With reference to CPSC-CH-E1001-08.3 - Standard Operating Procedure for Determining Total Lead (Pb) in Children’s Metal Products (Including Children’s Metal Jewelry)

Test Item(s)	Lead (Pb)
<b>Permissible Limit <sup>**</sup>(ppm)</b>	100
<b>Specimen Description</b>	<b>Result(s) (ppm)</b>
1. Black plastic (Straw) (#9-CDKW086 Black PP Straw)	ND
2. Aqua plastic (Straw) (#10-CDKW086 Aqua PP Straw)	ND
3. White plastic (Straw) (#11-CDKW086 White PP Straw)	ND
4. Navy plastic (Straw) (#12-CDKW086 Navy PP Straw)	ND
5. Gray plastic (Straw) (#13-CDKW086 Gray PP Straw)	ND
6. Translucent plastic ring (Straw) (#14-CDKW086 Translucent plastic ring on straw)	ND
7. Cream bamboo (Lid) (#6-CDKW086 Bamboo Lid)	ND
8. Silvery metal (Body) (#1-CDKW086 Black Stainless Steel Body, #2-CDKW086 Aqua Stainless Steel Body, #3-CDKW086 White Stainless Steel Body, #4-CDKW086 Navy Stainless Steel Body, #5-CDKW086 Stainless Steel Body)	ND
9. Translucent silicone rubber (Gasket) (#7-CDKW086 Silicone gasket on lid)	ND
10. Transparent silicone rubber (Gasket) (#8-CDKW086 Transparent plastic on lid)	ND

\*\* Permissible Limit applies to a children’s product manufactured after 14 August 2011 (Public Law 110-314 (Consumer Product Safety Improvement Act of 2008) and its Amendments Public Law 112-28)

- Note:
- ppm = parts per million
  - 1% = 10000 mg/kg = 10000 ppm
  - ND = Not Detected (lower than MDL)
  - MDL = Method Detection Limit = 10 ppm

This document is issued by the Company subject to its General Conditions of Service printed overleaf, available on request or accessible at <http://www.sgs.com/en/Terms-and-Conditions.aspx> and, for electronic format documents, subject to Terms and Conditions for Electronic Documents at <http://www.sgs.com/en/Terms-and-Conditions/Terms-e-Documents.aspx>. Attention is drawn to the limitation of liability, indemnification and jurisdiction issues defined therein. Any holder of this document is advised that information contained hereon reflects the Company’s findings at the time of its intervention only and within the limits of Client’s instructions, if any. The Company’s sole responsibility is to its Client and this document does not exonerate parties to a transaction from exercising all their rights and obligations under the transaction documents. This document cannot be reproduced except in full, without prior written approval of the Company. Any unauthorized alteration, forgery or falsification of the content or appearance of this document is unlawful and offenders may be prosecuted to the fullest extent of the law.

Unless otherwise stated the results shown in this test report refer only to the sample(s) tested and such sample(s) are retained for 30 days only.

**Bisphenol A (BPA) Content**

Method: Solvent extraction

Analysis was performed by High Performance Liquid Chromatography – Tandem Mass Spectrometer (HPLC-MS/MS)

Test Item(s)	Bisphenol A (BPA)	Requirement
Specimen Description	Result(s) (mg/kg)	
1. Translucent silicone rubber (Gasket) (#7-CDKW086 Silicone gasket on lid)	ND	Prohibited
2. Transparent silicone rubber (Gasket) (#8-CDKW086 Transparent plastic on lid)	ND	Prohibited
3. Black plastic (Straw) (#9-CDKW086 Black PP Straw)	ND	Prohibited
4. Aqua plastic (Straw) (#10-CDKW086 Aqua PP Straw)	ND	Prohibited
5. White plastic (Straw) (#11-CDKW086 White PP Straw)	ND	Prohibited
6. Navy plastic (Straw) (#12-CDKW086 Navy PP Straw)	ND	Prohibited
7. Gray plastic (Straw) (#13-CDKW086 Gray PP Straw)	ND	Prohibited
8. Translucent plastic ring (Straw) (#14-CDKW086 Translucent plastic ring on straw)	ND	Prohibited

- Note:
- mg/kg = milligram per kilogram
  - ND = Not Detected (lower than MDL)
  - MDL = Method Detection Limit = 1 mg/kg

This document is issued by the Company subject to its General Conditions of Service printed overleaf, available on request or accessible at <http://www.sgs.com/en/Terms-and-Conditions.aspx> and, for electronic format documents, subject to Terms and Conditions for Electronic Documents at <http://www.sgs.com/en/Terms-and-Conditions/Terms-e-Documents.aspx>. Attention is drawn to the limitation of liability, indemnification and jurisdiction issues defined therein. Any holder of this document is advised that information contained hereon reflects the Company's findings at the time of its intervention only and within the limits of Client's instructions, if any. The Company's sole responsibility is to its Client and this document does not exonerate parties to a transaction from exercising all their rights and obligations under the transaction documents. This document cannot be reproduced except in full, without prior written approval of the Company. Any unauthorized alteration, forgery or falsification of the content or appearance of this document is unlawful and offenders may be prosecuted to the fullest extent of the law.

Unless otherwise stated the results shown in this test report refer only to the sample(s) tested and such sample(s) are retained for 30 days only.

**Remark: Summary of Requirements**

Jurisdiction	Regulation/reference	Scope on BPA Ban	Requirement
Connecticut	Public Act 09-103 (HB 6572)	Reusable food or beverage container	Prohibited
		Plastic container, jar or can that contains infant formula or baby food	Prohibited
		Sell or distribute existing inventory of infant formula or baby food containers, jars or cans as of October 1, 2011, provided such items were purchased or acquired prior to October 1, 2011	Prohibited

**FDA 21 CFR 175.300 – Resinous and Polymeric Coating**

Method: With reference to 21 CFR 175.300

From Coating Intended for Repeated Use other than as a Component of a Container

Simulant used	Conditions	Result(s) (mg/inch <sup>2</sup> )	MDL (mg/inch <sup>2</sup> )	Permissible Limit (mg/inch <sup>2</sup> )
		1		
Distilled Water	150 °F for 2 hours	1.2	0.1	18

Specimen Description:

1. Transparent lacquer varnish on bamboo (Lid) (#6-CDKW086 Bamboo Lid)

- Note:
- mg/inch<sup>2</sup> = milligram per square inch
  - °F = degree Fahrenheit
  - MDL = Method Detection Limit

This document is issued by the Company subject to its General Conditions of Service printed overleaf, available on request or accessible at <http://www.sgs.com/en/Terms-and-Conditions.aspx> and, for electronic format documents, subject to Terms and Conditions for Electronic Documents at <http://www.sgs.com/en/Terms-and-Conditions/Terms-e-Document.aspx>. Attention is drawn to the limitation of liability, indemnification and jurisdiction issues defined therein. Any holder of this document is advised that information contained hereon reflects the Company's findings at the time of its intervention only and within the limits of Client's instructions, if any. The Company's sole responsibility is to its Client and this document does not exonerate parties to a transaction from exercising all their rights and obligations under the transaction documents. This document cannot be reproduced except in full, without prior written approval of the Company. Any unauthorized alteration, forgery or falsification of the content or appearance of this document is unlawful and offenders may be prosecuted to the fullest extent of the law.

Unless otherwise stated the results shown in this test report refer only to the sample(s) tested and such sample(s) are retained for 30 days only.



# Test Report

No.T32220271282TC

Date: JUN 09, 2022

Page 12 of 16

## US FDA 21 CFR 177.1210 (Closure with Sealing Gaskets) – Determination of Amount of Net Chloroform Soluble Extractives

Method: With reference to US FDA 21 CFR 177.1210

For Preformed Overall Discs or Annular Rings from Plasticized Polymers including Vulcanized Rubber

Simulant used	Test Condition	Result(s) (ppm)		MDL (ppm)	Permissible Limit (ppm)
		1	2		
Distilled Water	150°F for 2 hours	ND	ND	5	50

### Specimen Description:

1. Translucent silicone rubber (Gasket) (#7-CDKW086 Silicone gasket on lid)
2. Transparent silicone rubber (Gasket) (#8-CDKW086 Transparent plastic on lid)

- Note:
- ppm = parts per million
  - °F = degree Fahrenheit
  - ND = Not Detected (lower than MDL)
  - MDL = Method Detection Limit

## FDA 21 CFR 177.1520 - PP (Homo-polymer)

Method: With reference to 21 CFR 177.1520

Test Item(s)	1	2	3	Permissible Limit
1. Density (g/cm <sup>3</sup> )	0.903	0.904	0.904	0.880-0.913
2. Melting point (°C)	166	166	169	160 – 180
3. Maximum extractable fraction in n-hexane (w/w)	1.0%	0.8%	0.9%	6.4% at reflux temperature
4. Maximum soluble fraction in xylene (w/w)	3.0%	4.4%	3.6%	9.8% at 25°C

Test Item(s)	4	5	Permissible Limit
1. Density (g/cm <sup>3</sup> )	0.903	0.904	0.880-0.913
2. Melting point (°C)	167	167	160 – 180
3. Maximum extractable fraction in n-hexane (w/w)	1.1%	0.8%	6.4% at reflux temperature
4. Maximum soluble fraction in xylene (w/w)	4.2%	3.7%	9.8% at 25°C

This document is issued by the Company subject to its General Conditions of Service printed overleaf, available on request or accessible at <http://www.sgs.com/en/Terms-and-Conditions.aspx> and, for electronic format documents, subject to Terms and Conditions for Electronic Documents at <http://www.sgs.com/en/Terms-and-Conditions/Terms-e-Documents.aspx>. Attention is drawn to the limitation of liability, indemnification and jurisdiction issues defined therein. Any holder of this document is advised that information contained hereon reflects the Company's findings at the time of its intervention only and within the limits of Client's instructions, if any. The Company's sole responsibility is to its Client and this document does not exonerate parties to a transaction from exercising all their rights and obligations under the transaction documents. This document cannot be reproduced except in full, without prior written approval of the Company. Any unauthorized alteration, forgery or falsification of the content or appearance of this document is unlawful and offenders may be prosecuted to the fullest extent of the law.

Unless otherwise stated the results shown in this test report refer only to the sample(s) tested and such sample(s) are retained for 30 days only.

Specimen Description:

1. Black plastic (Straw) (#9-CDKW086 Black PP Straw)
2. Aqua plastic (Straw) (#10-CDKW086 Aqua PP Straw)
3. White plastic (Straw) (#11-CDKW086 White PP Straw)
4. Navy plastic (Straw) (#12-CDKW086 Navy PP Straw)
5. Gray plastic (Straw) (#13-CDKW086 Gray PP Straw)

- Note:
- % = percentage by weight
  - g/cm<sup>3</sup> = gram per cubical centimeter
  - °C = degree Celsius

**FDA 21 CFR 177.1520 - PP (Co-Polymer)**

Method: With reference to 21 CFR 177.1520

Test Item(s)	1	Permissible Limit
1. Density (g/cm <sup>3</sup> )	0.88	0.85-1.00
2. Maximum extractable fraction in n-hexane (w/w)	0.4%	5.5% at 50°C
3. Maximum soluble fraction in xylene (w/w)	6.2%	30% at 25°C

Specimen Description:

1. Translucent plastic ring (Straw) (#14-CDKW086 Translucent plastic ring on straw)

- Note:
- % = percentage by weight
  - g/cm<sup>3</sup> = gram per cubical centimeter
  - °C=degree Celsius

This document is issued by the Company subject to its General Conditions of Service printed overleaf, available on request or accessible at <http://www.sgs.com/en/Terms-and-Conditions.aspx> and, for electronic format documents, subject to Terms and Conditions for Electronic Documents at <http://www.sgs.com/en/Terms-and-Conditions/Terms-e-Document.aspx>. Attention is drawn to the limitation of liability, indemnification and jurisdiction issues defined therein. Any holder of this document is advised that information contained hereon reflects the Company's findings at the time of its intervention only and within the limits of Client's instructions, if any. The Company's sole responsibility is to its Client and this document does not exonerate parties to a transaction from exercising all their rights and obligations under the transaction documents. This document cannot be reproduced except in full, without prior written approval of the Company. Any unauthorized alteration, forgery or falsification of the content or appearance of this document is unlawful and offenders may be prosecuted to the fullest extent of the law.

Unless otherwise stated the results shown in this test report refer only to the sample(s) tested and such sample(s) are retained for 30 days only.

**US California Proposition 65 – Total Lead Content**

Method: With reference to CPSC-CH-E1003-09.1 - Standard Operating Procedure for Determining Lead (Pb) in Paint and Other Similar Surface Coatings

Method (non-metallic materials): With reference to CPSC-CH-E1002-08.3 - Standard Operation Procedure for Determining Total Lead (Pb) in Non-Metal Children Product

Method (metal materials): With reference to CPSC-CH-E1001-08.3 - Standard Operating Procedure for Determining Total Lead (Pb) in Children’s Metal Products (Including Children’s Metal Jewelry)

Analysis was performed by Inductively Coupled Plasma Optical Emission Spectrometer (ICP-OES) / Inductively Coupled Plasma Mass Spectrometry (ICP-MS)

Test Item(s)	Lead (Pb)
Specimen Description	Result(s) (ppm)
1. Black plastic (Straw) (#9-CDKW086 Black PP Straw)	ND
2. Aqua plastic (Straw) (#10-CDKW086 Aqua PP Straw)	ND
3. White plastic (Straw) (#11-CDKW086 White PP Straw)	ND
4. Navy plastic (Straw) (#12-CDKW086 Navy PP Straw)	ND
5. Gray plastic (Straw) (#13-CDKW086 Gray PP Straw)	ND
6. Translucent plastic ring (Straw) (#14-CDKW086 Translucent plastic ring on straw)	ND
7. Cream bamboo (Lid) (#6-CDKW086 Bamboo Lid)	ND
8. Translucent silicone rubber (Gasket) (#7-CDKW086 Silicone gasket on lid)	ND
9. Transparent silicone rubber (Gasket) (#8-CDKW086 Transparent plastic on lid)	ND
10. Silvery metal (Body) (#1-CDKW086 Black Stainless Steel Body, #2-CDKW086 Aqua Stainless Steel Body, #3-CDKW086 White Stainless Steel Body, #4-CDKW086 Navy Stainless Steel Body, #5-CDKW086 Stainless Steel Body)	ND
11. Black coating on metal (Body) (#1-CDKW086 Black Stainless Steel Body)	ND
12. Aqua coating on metal (Body) (#2-CDKW086 Aqua Stainless Steel Body)	ND
13. White coating on metal (Body) (#3-CDKW086 White Stainless Steel Body)	ND
14. Navy coating on metal (Body) (#4-CDKW086 Navy Stainless Steel Body)	ND
15. Transparent lacquer coating on bamboo (Lid) (#6-CDKW086 Bamboo Lid)	ND

- Note:
- ppm = parts per million
  - ND = Not Detected (lower than MDL)
  - 1% = 10000mg/kg=10000ppm
  - MDL = Method Detection Limit =10 ppm

This document is issued by the Company subject to its General Conditions of Service printed overleaf, available on request or accessible at <http://www.sgs.com/en/Terms-and-Conditions.aspx> and, for electronic format documents, subject to Terms and Conditions for Electronic Documents at <http://www.sgs.com/en/Terms-and-Conditions/Terms-e-Document.aspx>. Attention is drawn to the limitation of liability, indemnification and jurisdiction issues defined therein. Any holder of this document is advised that information contained hereon reflects the Company’s findings at the time of its intervention only and within the limits of Client’s instructions, if any. The Company’s sole responsibility is to its Client and this document does not exonerate parties to a transaction from exercising all their rights and obligations under the transaction documents. This document cannot be reproduced except in full, without prior written approval of the Company. Any unauthorized alteration, forgery or falsification of the content or appearance of this document is unlawful and offenders may be prosecuted to the fullest extent of the law.

Unless otherwise stated the results shown in this test report refer only to the sample(s) tested and such sample(s) are retained for 30 days only.

**Remark: Summary of permissible limit(s) of Lead requirement otherwise warning label required.**

Requirement(s)		Permissible Limit of Lead (ppm)	Effective Date
California Proposition 65 (County of Marin Case No. CIV 1104003)	Paint and surface coating	90	Current
	All other materials	100	Current

**Canada Consumer Product Safety Act (S.C. 2010, c. 21), Toys Regulations (SOR/2011-17) amended up to January 11, 2019 (Including amendments SOR/2012-71, SOR/2016-195, SOR/2016-302 and SOR/2018-138) - Section 23 (a) and Section 23 (c) - Lead and Mercury in surface coating material**

Method: With reference to Canada Health Product Safety Bureau, Reference Manual Book 5 – Laboratory Policies and Procedures, Part B: Test Methods Section, Method C-02.2:2017 and C-07:2019

Test Item(s)	Pb	Hg
<b>Permissible Limit (mg/kg)</b>	<b>90</b>	<b>ND</b>
<b>Specimen Description</b>	<b>Result(s) (mg/kg)</b>	
1. Black coating on metal (Body) (#1-CDKW086 Black Stainless Steel Body)	ND	ND
2. Aqua coating on metal (Body) (#2-CDKW086 Aqua Stainless Steel Body)	ND	ND
3. White coating on metal (Body) (#3-CDKW086 White Stainless Steel Body)	ND	ND
4. Navy coating on metal (Body) (#4-CDKW086 Navy Stainless Steel Body)	ND	ND
5. Transparent lacquer coating on bamboo (Lid) (#6-CDKW086 Bamboo Lid)	ND	ND

- Note:
- mg/kg = milligram per kilogram
  - ND = Not Detected (lower than MDL)
  - MDL = Method Detection Limit
  - MDL for Pb = 10 mg/kg
  - MDL for Hg = 10 mg/kg
  - The action level of Mercury is 10 mg/kg according to the Industry guide to Health Canada’s Safety Requirements for Children’s Toys and Related Products, 2012

This document is issued by the Company subject to its General Conditions of Service printed overleaf, available on request or accessible at <http://www.sgs.com/en/Terms-and-Conditions.aspx> and, for electronic format documents, subject to Terms and Conditions for Electronic Documents at <http://www.sgs.com/en/Terms-and-Conditions/Terms-e-Documents.aspx>. Attention is drawn to the limitation of liability, indemnification and jurisdiction issues defined therein. Any holder of this document is advised that information contained hereon reflects the Company’s findings at the time of its intervention only and within the limits of Client’s instructions, if any. The Company’s sole responsibility is to its Client and this document does not exonerate parties to a transaction from exercising all their rights and obligations under the transaction documents. This document cannot be reproduced except in full, without prior written approval of the Company. Any unauthorized alteration, forgery or falsification of the content or appearance of this document is unlawful and offenders may be prosecuted to the fullest extent of the law.

Unless otherwise stated the results shown in this test report refer only to the sample(s) tested and such sample(s) are retained for 30 days only.

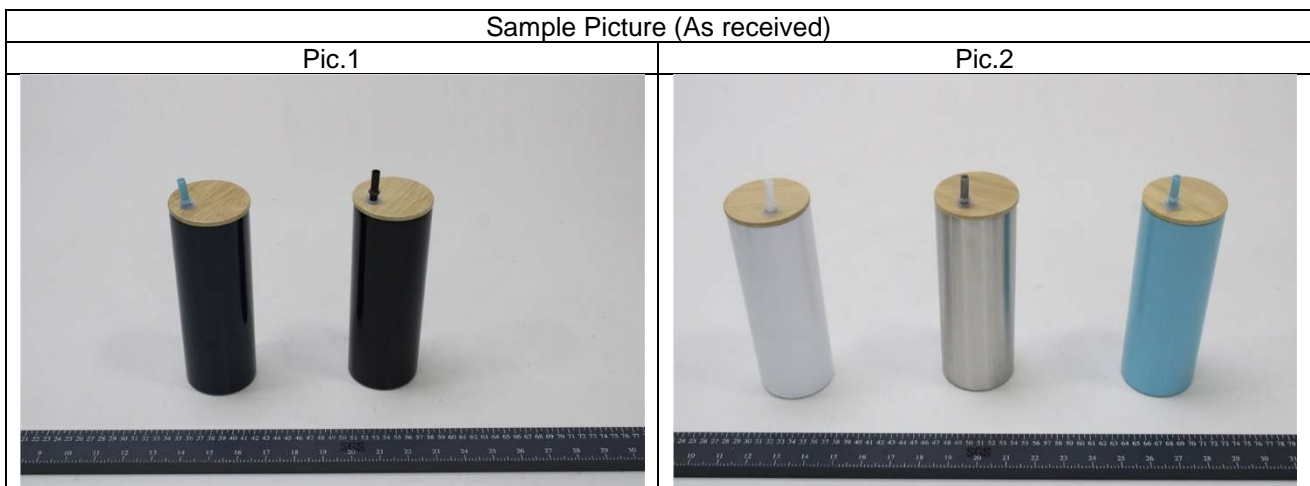
**Remark:**

When statement of conformity is made, unless the decision rule was mentioned in above specified test items, the decision rule would be based on the non-binary statement with guard band (is equal to the expanded measurement uncertainty with a 95% coverage probability,  $w = U_{95}$ ) in ILAC-G8:09/2019 Clause 4.2.3.

“Pass - the measured value is within (or below / above) the acceptance limit, where the acceptance limit is below / above to the guard band.” or “Pass - The measured values were observed in tolerance at the points tested. The specific false accept risk is up to 2.5%.”

“Fail - the measured value is out of (or below / above) the tolerance limit added / subtracted to the guard band.” or “Fail - One or more measured values were observed out of tolerance at the points tested”. The specific false reject risk is up to 2.5%.

“Inconclusive – It is not possible to state the conformity. Either one or more measured values were observed in the portion of the expanded measurement uncertainty intervals at the points tested where the specific risk is up to 50%.”



SGS authenticate the photo on original report only

\*\*\* End of Report \*\*\*

This document is issued by the Company subject to its General Conditions of Service printed overleaf, available on request or accessible at <http://www.sgs.com/en/Terms-and-Conditions.aspx> and, for electronic format documents, subject to Terms and Conditions for Electronic Documents at <http://www.sgs.com/en/Terms-and-Conditions/Terms-e-Documents.aspx>. Attention is drawn to the limitation of liability, indemnification and jurisdiction issues defined therein. Any holder of this document is advised that information contained hereon reflects the Company's findings at the time of its intervention only and within the limits of Client's instructions, if any. The Company's sole responsibility is to its Client and this document does not exonerate parties to a transaction from exercising all their rights and obligations under the transaction documents. This document cannot be reproduced except in full, without prior written approval of the Company. Any unauthorized alteration, forgery or falsification of the content or appearance of this document is unlawful and offenders may be prosecuted to the fullest extent of the law.

Unless otherwise stated the results shown in this test report refer only to the sample(s) tested and such sample(s) are retained for 30 days only.