

SPEC SHEET + MEASUREMENTS

SPORT-TEK

Sport-Tek® PosiCharge® Competitor™ Polo. ST550

Product photo



Our #1 performance tee fabric—offered in a color-locking, moisture-wicking polo—to expand your uniforming options.

- 3.8-ounce, 100% polyester interlock with PosiCharge technology
- Flat knit collar
- Removable tag for comfort and relabeling
- Taped neck
- 3-button placket with dyed-to-match buttons
- Set-in, open hem sleeves

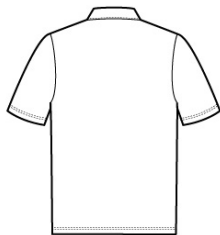
CARE INSTRUCTIONS

Machine wash cold with like colors. Only non-chlorine bleach. When needed tumble dry low, remove promptly. Cool iron if needed. Do not use softener. Do not dry clean.

Sketches



front



back

SPEC SHEET + MEASUREMENTS



Sport-Tek® PosiCharge® Competitor™ Polo. ST550

PRODUCT MEASUREMENTS

	XS	S	M	L	XL	2XL	3XL	4XL
Body Length at Front	28	29	30	31	32	33	33 1/2	34
Chest Width	18 1/2	20	21 1/2	23	24 1/2	26	28	30
Sleeve Length	17 3/4	18 1/2	19 1/4	20	20 3/4	21 1/2	22 1/4	23

Body Length at Front: Measure from high point shoulder to lowest point of hem at front.

Chest Width: Measured across the chest one inch below armhole when laid flat.

Sleeve Length: Start at center of neck and measure down shoulder, down sleeve to hem.

SIZE CHARTS

	XS	S	M	L	XL	2XL	3XL	4XL
Chest	32-34	35-37	38-40	41-43	44-46	47-49	50-53	54-57

SPEC SHEET + MEASUREMENTS

SPORT-TEK

Sport-Tek® PosiCharge® Competitor™ Polo. ST550

HOW TO MEASURE



CHEST

Measure under the arm and around the fullest part of the chest with arms down, keeping tape horizontal.

COLORS



Atomic Blue
PMS 2203C



Black
PMS BLACK
C



Carolina Blue
PMS 7454C



Deep Orange
PMS 173C



Deep Red
PMS 201C



Forest Green
PMS 553C



Gold
PMS 1235C



Iron Grey
PMS 7540C



Kelly Green
PMS 341C



Maroon
PMS 504C



Purple
PMS 7672C



Silver
PMS 429C



True Navy
PMS 533C



True Red
PMS 200C



True Royal
PMS 7687C



White