

SPEC SHEET + MEASUREMENTS

SPORT-TEK

Sport-Tek® Halftime Raglan Tee. ST6040

Product photo



Show off your team spirit with this fashion-inspired tee.

- 4.5-ounce, 60/40 combed ring spun cotton/polyester
- 1x1 rib neck
- Tear-away label
- Self neck tape
- Raglan sleeves

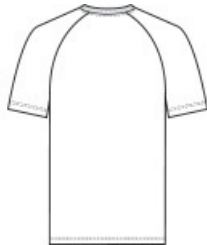
CARE INSTRUCTIONS

Machine Wash Cold With Like Colors. Non-Chlorine Bleach When Needed. Tumble Dry Low. Cool Iron If Necessary.

Sketches



front



back

SPEC SHEET + MEASUREMENTS



Sport-Tek® Halftime Raglan Tee. ST6040

PRODUCT MEASUREMENTS

	XS	S	M	L	XL	2XL	3XL	4XL
Body Length at Back	27 1/2	28 1/2	29 1/2	30 1/2	31 1/2	32 1/2	33	33 1/2
Chest Width	18	19 1/2	21	22 1/2	24	25 1/2	27 1/2	29 1/2
Raglans and Dolmans Sleeve Length	16 3/4	17 1/2	18 1/4	19	19 3/4	20 1/2	21 1/4	22

Body Length at Back: Measured from high point shoulder to finished hem at back.

Chest Width: Measured across the chest one inch below armhole when laid flat.

Raglans and Dolmans Sleeve Length: Measure from neck edge to finished hem.

SIZE CHARTS

	XS	S	M	L	XL	2XL	3XL	4XL
Chest	32-34	35-37	38-40	41-43	44-46	47-49	50-53	54-57

SPEC SHEET + MEASUREMENTS



Sport-Tek® Halftime Raglan Tee. ST6040

HOW TO MEASURE



CHEST

Measure under the arm and around the fullest part of the chest with arms down, keeping tape horizontal.

COLORS



Black
PMS BLACK
C



Black/ Vintage
Heather
PMS BLACK
C



Deep Red
PMS 201C



Ecru
PMS NO
MATCH



True Navy
PMS 533C



True Royal
PMS 7687C



Vintage
Heather
PMS 4195C



Vintage
Heather/ Ecru
PMS 4195C



White