

# SPEC SHEET + MEASUREMENTS



## Mercer+Mettle® 1/4-Zip Sweater. MM3020

### Product photo



An easy-to-layer, easy care essential designed to complement your work-life style features a perfect weight knit that maintains its shape regardless of wear. Rib detailing and a smart cadet collar exude a modern sophistication for work or play. **Fabric**

**+Weight • 90/9/1 cotton/nylon/spandex Features+Benefits •**

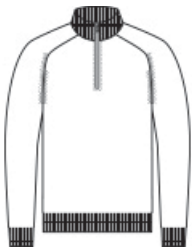
Rib collar, cuffs and hem

- Cadet collar
- Dyed-to-match coil zipper with black pull
- Fully-fashioned raglan sleeves

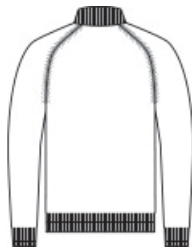
### CARE INSTRUCTIONS

Machine Wash Cold With Like Colors. Only Non-Chlorine Bleach When Needed. Tumble Dry Low. Cool Iron If Necessary.

### Sketches



front



back

# SPEC SHEET + MEASUREMENTS



## Mercer+Mettle® 1/4-Zip Sweater. MM3020

### PRODUCT MEASUREMENTS

	XS	S	M	L	XL	2XL	3XL	4XL
Body Length at Back	25 1/2	26 1/2	27 1/2	28 1/2	29 1/2	30 1/2	31	31 1/2
Chest Width	19	20 1/2	22	23 1/2	25	26 1/2	28 1/2	30 1/2
Sleeve Length from Center Back	32 1/4	33	33 3/4	34 1/2	35 1/4	36	36 3/4	37 1/2

**Body Length at Back:** Measured from high point shoulder to finished hem at back.

**Chest Width:** Measured across the chest one inch below armhole when laid flat.

**Sleeve Length from Center Back:** Measure from Center Back neck to shoulder point to sleeve hem.

### SIZE CHARTS

	XS	S	M	L	XL	2XL	3XL	4XL
Chest	32-34	35-37	38-40	41-43	44-47	48-51	52-56	57-61

# SPEC SHEET + MEASUREMENTS



Mercer+Mettle® 1/4-Zip Sweater. MM3020

## HOW TO MEASURE

---



### CHEST

Measure under the arm and around the fullest part of the chest with arms down, keeping tape horizontal.

## COLORS

---



Deep Black  
PMS BLACK  
C



Gusty Grey  
Heather  
PMS COOL  
GRAY 8C



Insignia Blue  
PMS NO  
MATCH