



Test Report

No.T32320330129TY

Date: NOV 07, 2023

Page 1 of 14

IMAGEN BRANDS

401 US HWY 160 DONIPHAN, MO 63935, UNITED STATES

The following samples were submitted and identified by/on behalf of the client as:

MAGNETIC POCKET LEVEL MEASURING TOOL

Item No. : CTLS024
Shipment No. : DP00051966
Test Request Form No. IB0372
Manufacture Date : 2023
Country of Origin : CHINA
Country of Destination : CANADA, UNITED STATES
Sample Receiving Date : OCT 07, 2023
Last Submission Sample Date : OCT 30, 2023
Testing Period : OCT 07, 2023 TO NOV 07, 2023

This document is issued by the Company subject to its General Conditions of Service printed overleaf, available on request or accessible at <http://www.sgs.com/en/Terms-and-Conditions.aspx> and, for electronic format documents, subject to Terms and Conditions for Electronic Documents at <http://www.sgs.com/en/Terms-and-Conditions/Terms-e-Documents.aspx>. Attention is drawn to the limitation of liability, indemnification and jurisdiction issues defined therein. Any holder of this document is advised that information contained hereon reflects the Company's findings at the time of its intervention only and within the limits of Client's instructions, if any. The Company's sole responsibility is to its Client and this document does not exonerate parties to a transaction from exercising all their rights and obligations under the transaction documents. This document cannot be reproduced except in full, without prior written approval of the Company. Any unauthorized alteration, forgery or falsification of the content or appearance of this document is unlawful and offenders may be prosecuted to the fullest extent of the law.

Unless otherwise stated the results shown in this test report refer only to the sample(s) tested and such sample(s) are retained for 30 days only.





Test Report

No.T32320330129TY

Date: NOV 07, 2023

Page 2 of 14

Test Requested		Conclusion
1.	Title 16, Code of Federal Regulations, Chapter II - Consumer Products Safety Commission of U.S.A. - Part 1303 - Ban of Lead - Containing Paint and Certain Consumer Products Bearing Lead - Containing Paint – Lead Content	PASS
2.	CPSIA section 101 - Total Lead content	--
	CPSIA section 101(f) (1) – Lead in paint/similar surface coating material	PASS
	CPSIA section 101(a) (2) – Lead in accessible substrate materials (Including Children’s Metal Jewelry)	PASS
3.	US 16 CFR Part 1307 – Phthalates	PASS
4.	US California Proposition 65 – Lead Content	PASS
5.	US California Proposition 65 – Phthalates Content	PASS
6.	Canada Consumer Product Safety Act (S.C. 2010, c. 21), Toys Regulations (SOR/2011-17) amended up to January 11, 2019 (Including amendments SOR/2012-71, SOR/2016-195, SOR/2016-302 and SOR/2018-138) - Section 23 (a) and Section 23 (c) - Lead and Mercury in surface coating material	PASS
7.	Low Temperature Test	SEE RESULT

***** FOR FURTHER DETAILS, PLEASE REFER TO THE FOLLOWING PAGE(S) *****

Signed for and on behalf of
SGS Hong Kong Ltd.

To Man Wah, Po
Technical Manager

This document is issued by the Company subject to its General Conditions of Service printed overleaf, available on request or accessible at <http://www.sgs.com/en/Terms-and-Conditions.aspx> and, for electronic format documents, subject to Terms and Conditions for Electronic Documents at <http://www.sgs.com/en/Terms-and-Conditions/Terms-e-Documents.aspx>. Attention is drawn to the limitation of liability, indemnification and jurisdiction issues defined therein. Any holder of this document is advised that information contained hereon reflects the Company’s findings at the time of its intervention only and within the limits of Client’s instructions, if any. The Company’s sole responsibility is to its Client and this document does not exonerate parties to a transaction from exercising all their rights and obligations under the transaction documents. This document cannot be reproduced except in full, without prior written approval of the Company. Any unauthorized alteration, forgery or falsification of the content or appearance of this document is unlawful and offenders may be prosecuted to the fullest extent of the law.

Unless otherwise stated the results shown in this test report refer only to the sample(s) tested and such sample(s) are retained for 30 days only.



Test Results:

CPSC 16 CFR 1303 - Lead in Paint/Similar Surface Coating Materials

Method: With reference to CPSC-CH-E1003-09.1 - Standard Operating Procedure for Determining Lead (Pb) in Paint and Other Similar Surface Coatings

Test Item(s)	Lead (Pb)
Permissible Limit (ppm)	90
Specimen Description	Result(s) (ppm)
1. Yellow coating on metal (Body)	ND
2. Black wet paint	ND

- Note:
- ppm = parts per million
 - ND = Not Detected (lower than MDL)
 - MDL = Method Detection Limit = 10 ppm
 - 1% = 10000 mg/kg = 10000 ppm

The below note(s) is(are) applicable in case the relevant superscript(s) and symbol(s) was(were) shown in the result table:

- + Composite test has been performed as per client's request and the results are calculated using the minimum specimen weight
- ^Δ Test result is over the action limit as suggested by CPSC-CH-E1003-09.1. As the result is based on composite test and falls into an uncertain range, where "Pass" or "Fail" cannot be truly defined, "Interim-Fail" is given since the specimen may possibly fail according to the regulatory limit. Individual test is highly recommended to determine the exact Lead content in each component. The decision rule has prescribed in the regulation or standard, conformity reporting will base on the standard.
- * Exceeds Permissible Limit

This document is issued by the Company subject to its General Conditions of Service printed overleaf, available on request or accessible at <http://www.sgs.com/en/Terms-and-Conditions.aspx> and, for electronic format documents, subject to Terms and Conditions for Electronic Documents at <http://www.sgs.com/en/Terms-and-Conditions/Terms-e-Document.aspx>. Attention is drawn to the limitation of liability, indemnification and jurisdiction issues defined therein. Any holder of this document is advised that information contained hereon reflects the Company's findings at the time of its intervention only and within the limits of Client's instructions, if any. The Company's sole responsibility is to its Client and this document does not exonerate parties to a transaction from exercising all their rights and obligations under the transaction documents. This document cannot be reproduced except in full, without prior written approval of the Company. Any unauthorized alteration, forgery or falsification of the content or appearance of this document is unlawful and offenders may be prosecuted to the fullest extent of the law.

Unless otherwise stated the results shown in this test report refer only to the sample(s) tested and such sample(s) are retained for 30 days only.

CPSIA - Lead in Paint/Similar Surface Coating Materials

Method: With reference to CPSC-CH-E1003-09.1 - Standard Operating Procedure for Determining Lead (Pb) in Paint and Other Similar Surface Coatings

Test Item(s)	Lead (Pb)
Permissible Limit (ppm)	90
Specimen Description	Result(s) (ppm)
1. Yellow coating on metal (Body)	ND
2. Black wet paint	ND

- Note:
- ppm = parts per million
 - ND = Not Detected (lower than MDL)
 - MDL = Method Detection Limit = 10 ppm
 - 1% = 10000 mg/kg = 10000 ppm

The below note(s) is(are) applicable in case the relevant superscript(s) and symbol(s) was(were) shown in the result table:

- + Composite test has been performed as per client's request and the results are calculated using the minimum specimen weight
- ^Δ Test result is over the action limit as suggested by CPSC-CH-E1003-09.1. As the result is based on composite test and falls into an uncertain range, where "Pass" or "Fail" cannot be truly defined, "Interim-Fail" is given since the specimen may possibility fail according to the regulatory limit. Individual test is highly recommended to determine the exact Lead content in each component. The decision rule has prescribed in the regulation or standard, conformity reporting will base on the standard.
- * Exceeds Permissible Limit

This document is issued by the Company subject to its General Conditions of Service printed overleaf, available on request or accessible at <http://www.sgs.com/en/Terms-and-Conditions.aspx> and, for electronic format documents, subject to Terms and Conditions for Electronic Documents at <http://www.sgs.com/en/Terms-and-Conditions/Terms-e-Documents.aspx>. Attention is drawn to the limitation of liability, indemnification and jurisdiction issues defined therein. Any holder of this document is advised that information contained hereon reflects the Company's findings at the time of its intervention only and within the limits of Client's instructions, if any. The Company's sole responsibility is to its Client and this document does not exonerate parties to a transaction from exercising all their rights and obligations under the transaction documents. This document cannot be reproduced except in full, without prior written approval of the Company. Any unauthorized alteration, forgery or falsification of the content or appearance of this document is unlawful and offenders may be prosecuted to the fullest extent of the law.

Unless otherwise stated the results shown in this test report refer only to the sample(s) tested and such sample(s) are retained for 30 days only.

CPSIA - Lead in Accessible Substrate Materials

Method (non-metallic materials): With reference to CPSC-CH-E1002-08.3 - Standard Operation Procedure for Determining Total Lead (Pb) in Non-Metal Children Product

Method (metal materials): With reference to CPSC-CH-E1001-08.3 - Standard Operating Procedure for Determining Total Lead (Pb) in Children’s Metal Products (Including Children’s Metal Jewelry)

Test Item(s)	Lead (Pb)
Permissible Limit (ppm)	100
Specimen Description	Result(s) (ppm)
1. Black soft plastic (Body) (Submitted on Oct 30, 2023)	ND
2. Black plastic (Body)	ND
3. White plastic (Body)	ND
4. Transparent plastic (Body)	ND
5. White glue (Submitted on Oct 30, 2023)	ND
6. Silvery metal (Body)	31

- Note:
- ppm = parts per million
 - ND = Not Detected (lower than MDL)
 - MDL = Method Detection Limit = 10 ppm
 - 1% = 10000 mg/kg = 10000 ppm

The below note(s) is(are) applicable in case the relevant superscript(s) and symbol(s) was(were) shown in the result table:

- ^Δ Test result is over recommended action limit (80% of the regulatory limit). As the result is based on composite test and falls into an uncertain range, where “Pass” or “Fail” cannot be truly defined, “Interim-Fail” is given since the specimen may possibility fail according to the regulatory limit. Individual test is highly recommended to determine the exact Lead content in each component. The decision rule has prescribed in the regulation or standard, conformity reporting will base on the standard.
- ⁺ Composite test has been performed as per client’s request and the results are calculated using the minimum specimen weight
- ^{*} Exceeds Permissible Limit

This document is issued by the Company subject to its General Conditions of Service printed overleaf, available on request or accessible at <http://www.sgs.com/en/Terms-and-Conditions.aspx> and, for electronic format documents, subject to Terms and Conditions for Electronic Documents at <http://www.sgs.com/en/Terms-and-Conditions/Terms-e-Documents.aspx>. Attention is drawn to the limitation of liability, indemnification and jurisdiction issues defined therein. Any holder of this document is advised that information contained hereon reflects the Company’s findings at the time of its intervention only and within the limits of Client’s instructions, if any. The Company’s sole responsibility is to its Client and this document does not exonerate parties to a transaction from exercising all their rights and obligations under the transaction documents. This document cannot be reproduced except in full, without prior written approval of the Company. Any unauthorized alteration, forgery or falsification of the content or appearance of this document is unlawful and offenders may be prosecuted to the fullest extent of the law.

Unless otherwise stated the results shown in this test report refer only to the sample(s) tested and such sample(s) are retained for 30 days only.

US 16 CFR Part 1307 – Phthalates Content

Method: With reference to CPSC-CH-C1001-09.4

Analysis was performed by Gas Chromatography Mass Spectrometer (GC-MS) / High Performance Liquid Chromatography with Mass Spectrometer (HPLC-MS)

Test Item(s) Specimen No.	CAS No.	Result (s) (%)			MDL (%)	Permissible Limit (%)
		1	2	3		
Dibutyl Phthalate (DBP)	84-74-2	ND	0.004	ND	0.003	0.1
Benzylbutyl Phthalate (BBP)	85-68-7	ND	ND	ND	0.003	0.1
Di-(2-ethyl hexyl) phthalate (DEHP) / Dioctyl Phthalate (DOP)	117-81-7	ND	ND	ND	0.003	0.1
Diisononyl Phthalate (DINP)	28553-12-0 68515-48-0	ND	ND	ND	0.010	0.1
Di-n-Hexyl phthalate (DHP/DnHP/DHEXP)	84-75-3	ND	ND	ND	0.003	0.1
Diisobutyl phthalate (DIBP)	84-69-5	ND	ND	ND	0.003	0.1
Di-n-pentyl phthalate (DPP/DPEP/DPENP)	131-18-0	ND	ND	ND	0.003	0.1
Dicyclohexyl phthalate (DCHP)	84-61-7	ND	ND	ND	0.003	0.1

Test Item(s) Specimen No.	CAS No.	Result (s) (%)		MDL (%)	Permissible Limit (%)
		4	5		
Dibutyl Phthalate (DBP)	84-74-2	ND	ND	0.003	0.1
Benzylbutyl Phthalate (BBP)	85-68-7	ND	ND	0.003	0.1
Di-(2-ethyl hexyl) phthalate (DEHP) / Dioctyl Phthalate (DOP)	117-81-7	ND	ND	0.003	0.1
Diisononyl Phthalate (DINP)	28553-12-0 68515-48-0	ND	ND	0.010	0.1
Di-n-Hexyl phthalate (DHP/DnHP/DHEXP)	84-75-3	ND	ND	0.003	0.1
Diisobutyl phthalate (DIBP)	84-69-5	ND	ND	0.003	0.1
Di-n-pentyl phthalate (DPP/DPEP/DPENP)	131-18-0	ND	ND	0.003	0.1
Dicyclohexyl phthalate (DCHP)	84-61-7	ND	ND	0.003	0.1

This document is issued by the Company subject to its General Conditions of Service printed overleaf, available on request or accessible at <http://www.sgs.com/en/Terms-and-Conditions.aspx> and, for electronic format documents, subject to Terms and Conditions for Electronic Documents at <http://www.sgs.com/en/Terms-and-Conditions/Terms-e-Documents.aspx>. Attention is drawn to the limitation of liability, indemnification and jurisdiction issues defined therein. Any holder of this document is advised that information contained hereon reflects the Company's findings at the time of its intervention only and within the limits of Client's instructions, if any. The Company's sole responsibility is to its Client and this document does not exonerate parties to a transaction from exercising all their rights and obligations under the transaction documents. This document cannot be reproduced except in full, without prior written approval of the Company. Any unauthorized alteration, forgery or falsification of the content or appearance of this document is unlawful and offenders may be prosecuted to the fullest extent of the law.

Unless otherwise stated the results shown in this test report refer only to the sample(s) tested and such sample(s) are retained for 30 days only.

Test Item(s) Specimen No.	CAS No.	Result (s) (%)		MDL (%)	Permissible Limit (%)
		6	7		
Dibutyl Phthalate (DBP)	84-74-2	ND	ND	0.003	0.1
Benzylbutyl Phthalate (BBP)	85-68-7	ND	0.029	0.003	0.1
Di-(2-ethyl hexyl) phthalate (DEHP) / Dioctyl Phthalate (DOP)	117-81-7	0.015	ND	0.003	0.1
Diisononyl Phthalate (DINP)	28553-12-0 68515-48-0	ND	ND	0.010	0.1
Di-n-Hexyl phthalate (DHP/DnHP/DHEXP)	84-75-3	ND	ND	0.003	0.1
Diisobutyl phthalate (DIBP)	84-69-5	ND	ND	0.003	0.1
Di-n-pentyl phthalate (DPP/DPEP/DPENP)	131-18-0	ND	ND	0.003	0.1
Dicyclohexyl phthalate (DCHP)	84-61-7	ND	ND	0.003	0.1

Specimen Description:

1. Black soft plastic (Body) (Submitted on Oct 30, 2023)
2. Black plastic (Body)
3. White plastic (Body)
4. Transparent plastic (Body)
5. White glue (Submitted on Oct 30, 2023)
6. Yellow coating on metal (Body)
7. Black wet paint

- Note:
- % = percentage by weight
 - ND = Not Detected (lower than MDL)
 - MDL = Method Detection Limit
 - 1% = 10000 mg/kg = 10000 ppm

The below note(s) is(are) applicable in case the relevant superscript(s) and symbol(s) was(were) shown in the result table:

- + Composite test has been performed as per client's request and the results are calculated using the total specimen weight
- ^Δ Result is made based on the composite test which may have the probability of one or more components that can lead to a failure conclusion. Individual test is highly recommended for each component
- * Exceeds Permissible Limit

This document is issued by the Company subject to its General Conditions of Service printed overleaf, available on request or accessible at <http://www.sgs.com/en/Terms-and-Conditions.aspx> and, for electronic format documents, subject to Terms and Conditions for Electronic Documents at <http://www.sgs.com/en/Terms-and-Conditions/Terms-e-Documents.aspx>. Attention is drawn to the limitation of liability, indemnification and jurisdiction issues defined therein. Any holder of this document is advised that information contained hereon reflects the Company's findings at the time of its intervention only and within the limits of Client's instructions, if any. The Company's sole responsibility is to its Client and this document does not exonerate parties to a transaction from exercising all their rights and obligations under the transaction documents. This document cannot be reproduced except in full, without prior written approval of the Company. Any unauthorized alteration, forgery or falsification of the content or appearance of this document is unlawful and offenders may be prosecuted to the fullest extent of the law.

Unless otherwise stated the results shown in this test report refer only to the sample(s) tested and such sample(s) are retained for 30 days only.



US California Proposition 65 – Total Lead Content

Method: With reference to CPSC-CH-E1003-09.1 / CPSC-CH-E1002-08.3 / CPSC-CH-E1001-08.3
Analysis was performed by Inductively Coupled Plasma Optical Emission Spectrometer (ICP-OES) / Inductively Coupled Plasma Mass Spectrometry (ICP-MS)

Test Item(s)	Lead (Pb)
Specimen Description	Result(s) (ppm)
1. Yellow coating on metal (Body)	ND
2. Black wet paint	ND
3. Black soft plastic (Body) (Submitted on Oct 30, 2023)	ND
4. Black plastic (Body)	ND
5. White plastic (Body)	ND
6. Transparent plastic (Body)	ND
7. White glue (Submitted on Oct 30, 2023)	ND
8. Silvery metal (Body)	31

- Note:
- ppm = parts per million
 - ND = Not Detected (lower than MDL)
 - MDL = Method Detection Limit =10 ppm
 - 1% = 10000mg/kg=10000ppm

The below note(s) is(are) applicable in case the relevant superscript(s) and symbol(s) was(were) shown in the result table:

- + Composite test has been performed as per client’s request and the results are calculated using the minimum specimen weight
- * Exceed Permissible Limit

Remark: Summary of permissible limit(s) of Lead requirement otherwise warning label required.

Requirement(s)	Permissible Limit of Lead (ppm)
California Proposition 65 (Out-of-court Settlement for Hand tools)	90

This document is issued by the Company subject to its General Conditions of Service printed overleaf, available on request or accessible at <http://www.sgs.com/en/Terms-and-Conditions.aspx> and, for electronic format documents, subject to Terms and Conditions for Electronic Documents at <http://www.sgs.com/en/Terms-and-Conditions/Terms-e-Documents.aspx>. Attention is drawn to the limitation of liability, indemnification and jurisdiction issues defined therein. Any holder of this document is advised that information contained hereon reflects the Company’s findings at the time of its intervention only and within the limits of Client’s instructions, if any. The Company’s sole responsibility is to its Client and this document does not exonerate parties to a transaction from exercising all their rights and obligations under the transaction documents. This document cannot be reproduced except in full, without prior written approval of the Company. Any unauthorized alteration, forgery or falsification of the content or appearance of this document is unlawful and offenders may be prosecuted to the fullest extent of the law.

Unless otherwise stated the results shown in this test report refer only to the sample(s) tested and such sample(s) are retained for 30 days only.

California Prop 65 - Phthalates Content

Method: With reference to CPSC-CH-C1001-09.4

Analysis was performed by Gas Chromatography Mass Spectrometer (GC-MS) / High Performance Liquid Chromatography with Mass Spectrometer (HPLC-MS)

Test Item(s) Specimen No.	CAS No.	Result(s) (%)			MDL (%)
		1	2	3	
Dibutyl phthalate (DBP)	84-74-2	ND	0.004	ND	0.003
Benzyl butyl phthalate (BBP)	85-68-7	ND	ND	ND	0.003
Di-(2-ethyl hexyl) phthalate (DEHP) / Dioctyl Phthalate (DOP)	117-81-7	ND	ND	ND	0.003
Di-"isononyl" phthalate (DINP)	28553-12-0 68515-48-0	ND	ND	ND	0.010
Di-"isodecyl" phthalate (DIDP)	26761-40-0 68515-49-1	ND	ND	ND	0.010
Di-n-Hexyl phthalate (DHP/DnHP/DHEXP)	84-75-3	ND	ND	ND	0.003

Test Item(s) Specimen No.	CAS No.	Result(s) (%)		MDL (%)
		4	5	
Dibutyl phthalate (DBP)	84-74-2	ND	ND	0.003
Benzyl butyl phthalate (BBP)	85-68-7	ND	ND	0.003
Di-(2-ethyl hexyl) phthalate (DEHP) / Dioctyl Phthalate (DOP)	117-81-7	ND	ND	0.003
Di-"isononyl" phthalate (DINP)	28553-12-0 68515-48-0	ND	ND	0.010
Di-"isodecyl" phthalate (DIDP)	26761-40-0 68515-49-1	ND	ND	0.010
Di-n-Hexyl phthalate (DHP/DnHP/DHEXP)	84-75-3	ND	ND	0.003

This document is issued by the Company subject to its General Conditions of Service printed overleaf, available on request or accessible at <http://www.sgs.com/en/Terms-and-Conditions.aspx> and, for electronic format documents, subject to Terms and Conditions for Electronic Documents at <http://www.sgs.com/en/Terms-and-Conditions/Terms-e-Document.aspx>. Attention is drawn to the limitation of liability, indemnification and jurisdiction issues defined therein. Any holder of this document is advised that information contained hereon reflects the Company's findings at the time of its intervention only and within the limits of Client's instructions, if any. The Company's sole responsibility is to its Client and this document does not exonerate parties to a transaction from exercising all their rights and obligations under the transaction documents. This document cannot be reproduced except in full, without prior written approval of the Company. Any unauthorized alteration, forgery or falsification of the content or appearance of this document is unlawful and offenders may be prosecuted to the fullest extent of the law.

Unless otherwise stated the results shown in this test report refer only to the sample(s) tested and such sample(s) are retained for 30 days only.

Test Item(s) Specimen No.	CAS No.	Result(s) (%)		MDL (%)
		6	7	
Dibutyl phthalate (DBP)	84-74-2	ND	ND	0.003
Benzyl butyl phthalate (BBP)	85-68-7	ND	0.029	0.003
Di-(2-ethyl hexyl) phthalate (DEHP) / Dioctyl Phthalate (DOP)	117-81-7	0.015	ND	0.003
Di-"isononyl" phthalate (DINP)	28553-12-0 68515-48-0	ND	ND	0.010
Di-"isodecyl" phthalate (DIDP)	26761-40-0 68515-49-1	ND	0.017	0.010
Di-n-Hexyl phthalate (DHP/DnHP/DHEXP)	84-75-3	ND	ND	0.003

Specimen Description:

1. Black soft plastic (Body) (Submitted on Oct 30, 2023)
2. Black plastic (Body)
3. White plastic (Body)
4. Transparent plastic (Body)
5. White glue(Submitted on Oct 30, 2023)
6. Yellow coating on metal (Body)
7. Black wet paint

- Note:
- % = percentage by weight
 - MDL = Method Detection Limit
 - ND = Not Detected (lower than MDL)
 - 1% = 10000 mg/kg = 10000 ppm

The below note(s) is(are) applicable in case the relevant superscript(s) and symbol(s) was(were) shown in the result table:

- + Composite test has been performed as per client's request and the results are calculated using the total specimen weight
- ^Δ Result is made based on the composite test which may have the probability of one or more components that can lead to a failure conclusion. Individual test is highly recommended for each component
- NA = Not Applicable
- * Exceed Permissible Limit

Summary of Permissible Limit of Requirement(s) otherwise warning label required:

Requirement(s)	Permissible Limit
California Proposition 65 (Out-of-court settlement)	
- Hand Tools	≤ 0.1% DEHP otherwise warning
California Proposition 65 (Out-of-court settlement)	
- Tool kits	< 0.1% each of DEHP, BBP, DBP, DIDP, DINP and DnHP otherwise warning

Canada Consumer Product Safety Act (S.C. 2010, c. 21), Toys Regulations (SOR/2011-17) amended up to January 11, 2019 (Including amendments SOR/2012-71, SOR/2016-195, SOR/2016-302 and SOR/2018-138) - Section 23 (a) and Section 23 (c) - Lead and Mercury in surface coating material

Method: With reference to Canada Health Product Safety Bureau, Reference Manual Book 5 – Laboratory Policies and Procedures, Part B: Test Methods Section, Method C-02.2:2017 and C-07:2019

Test Item(s)	Pb	Hg
Permissible Limit (mg/kg)	90	ND
Specimen Description	Result(s) (mg/kg)	
1. Yellow coating on metal (Body)	ND	ND
2. Black wet paint	ND	ND

Note: mg/kg = milligram per kilogram

- ND = Not Detected (lower than MDL)
- MDL = Method Detection Limit = 10 mg/kg
- The action level of Mercury is 10 mg/kg according to the Industry guide to Health Canada’s Safety Requirements for Children’s Toys and Related Products, 2012

The below note(s) is(are) applicable in case the relevant superscript(s) and symbol(s) was(were) shown in the result table:

- + Composite test has been performed as per client’s request and the results are calculated using the minimum specimen weight
- * Exceed Permissible Limit

This document is issued by the Company subject to its General Conditions of Service printed overleaf, available on request or accessible at <http://www.sgs.com/en/Terms-and-Conditions.aspx> and, for electronic format documents, subject to Terms and Conditions for Electronic Documents at <http://www.sgs.com/en/Terms-and-Conditions/Terms-e-Documents.aspx>. Attention is drawn to the limitation of liability, indemnification and jurisdiction issues defined therein. Any holder of this document is advised that information contained hereon reflects the Company’s findings at the time of its intervention only and within the limits of Client’s instructions, if any. The Company’s sole responsibility is to its Client and this document does not exonerate parties to a transaction from exercising all their rights and obligations under the transaction documents. This document cannot be reproduced except in full, without prior written approval of the Company. Any unauthorized alteration, forgery or falsification of the content or appearance of this document is unlawful and offenders may be prosecuted to the fullest extent of the law.

Unless otherwise stated the results shown in this test report refer only to the sample(s) tested and such sample(s) are retained for 30 days only.

Low Temperature Test

Summary of Results:

No.	Test Item	Test Method	Result	Conclusion
1	Low Temperature Test	Provided by client	No breakage in glass, no condensation of internal liquid and can be used normally	/

Note: Pass : Meet the requirements;
 Fail : Does not meet the requirements;
 / : Not Apply to the judgment.

Test Item: Low Temperature Test

Sample Description: Finished product

Test Method: Provided by client

Test Condition:

Low temperature condition: -40°C, 24h → Recovery to (23±2)°C

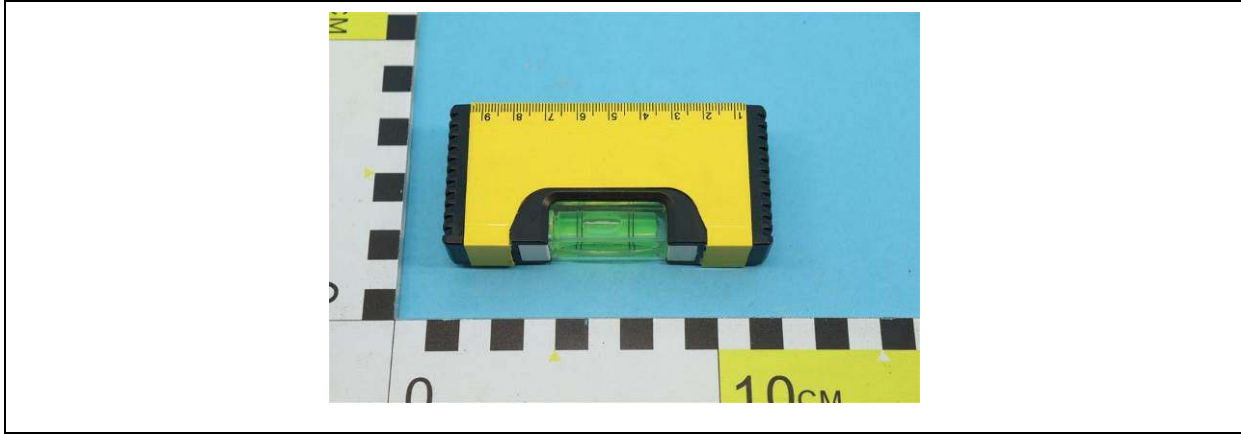
Test Result:

Test Item	Result
Low Temperature Test	No breakage in glass, no condensation of internal liquid and can be used normally

This document is issued by the Company subject to its General Conditions of Service printed overleaf, available on request or accessible at <http://www.sgs.com/en/Terms-and-Conditions.aspx> and, for electronic format documents, subject to Terms and Conditions for Electronic Documents at <http://www.sgs.com/en/Terms-and-Conditions/Terms-e-Documents.aspx>. Attention is drawn to the limitation of liability, indemnification and jurisdiction issues defined therein. Any holder of this document is advised that information contained hereon reflects the Company's findings at the time of its intervention only and within the limits of Client's instructions, if any. The Company's sole responsibility is to its Client and this document does not exonerate parties to a transaction from exercising all their rights and obligations under the transaction documents. This document cannot be reproduced except in full, without prior written approval of the Company. Any unauthorized alteration, forgery or falsification of the content or appearance of this document is unlawful and offenders may be prosecuted to the fullest extent of the law.

Unless otherwise stated the results shown in this test report refer only to the sample(s) tested and such sample(s) are retained for 30 days only.

Test Photo:



Original sample A



During Test



After Test

Equipment Information:

Equipment	Model	Equipment No.	Calibration date	Next Calibration date
High/Low Temperature Cyclic and Damp Heat Chamber	SETH-Z-042L	GZMR-AG-E089	2022-11-15	2023-11-14

Remark: The tests were conducted by SGS-CSTC Guangzhou Lab.

This document is issued by the Company subject to its General Conditions of Service printed overleaf, available on request or accessible at <http://www.sgs.com/en/Terms-and-Conditions.aspx> and, for electronic format documents, subject to Terms and Conditions for Electronic Documents at <http://www.sgs.com/en/Terms-and-Conditions/Terms-e-Document.aspx>. Attention is drawn to the limitation of liability, indemnification and jurisdiction issues defined therein. Any holder of this document is advised that information contained hereon reflects the Company's findings at the time of its intervention only and within the limits of Client's instructions, if any. The Company's sole responsibility is to its Client and this document does not exonerate parties to a transaction from exercising all their rights and obligations under the transaction documents. This document cannot be reproduced except in full, without prior written approval of the Company. Any unauthorized alteration, forgery or falsification of the content or appearance of this document is unlawful and offenders may be prosecuted to the fullest extent of the law.

Unless otherwise stated the results shown in this test report refer only to the sample(s) tested and such sample(s) are retained for 30 days only.

Remark:

When statement of conformity is made, unless the decision rule was mentioned in above specified test items, the decision rule would be based on the non-binary statement with guard band (is equal to the expanded measurement uncertainty with a 95% coverage probability, $w = U_{95}$) in ILAC-G8:09/2019 Clause 4.2.3.

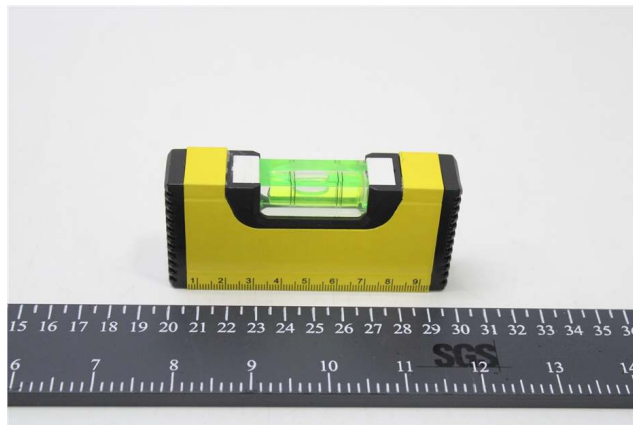
“Pass - the measured value is within (or below / above) the acceptance limit, where the acceptance limit is below / above to the guard band.” or “Pass - The measured values were observed in tolerance at the points tested. The specific false accept risk is up to 2.5%.”.

“Fail - the measured value is out of (or below / above) the tolerance limit added / subtracted to the guard band.” or “Fail - One or more measured values were observed out of tolerance at the points tested”. The specific false reject risk is up to 2.5%.

“Inconclusive – It is not possible to state the conformity. Either one or more measured values were observed in the portion of the expanded measurement uncertainty intervals at the points tested where the specific risk is up to 50%.”

Sample Picture (As received)

Pic.1



SGS authenticate the photo on original report only

*** End of Report ***

This document is issued by the Company subject to its General Conditions of Service printed overleaf, available on request or accessible at <http://www.sgs.com/en/Terms-and-Conditions.aspx> and, for electronic format documents, subject to Terms and Conditions for Electronic Documents at <http://www.sgs.com/en/Terms-and-Conditions/Terms-e-Documents.aspx>. Attention is drawn to the limitation of liability, indemnification and jurisdiction issues defined therein. Any holder of this document is advised that information contained hereon reflects the Company's findings at the time of its intervention only and within the limits of Client's instructions, if any. The Company's sole responsibility is to its Client and this document does not exonerate parties to a transaction from exercising all their rights and obligations under the transaction documents. This document cannot be reproduced except in full, without prior written approval of the Company. Any unauthorized alteration, forgery or falsification of the content or appearance of this document is unlawful and offenders may be prosecuted to the fullest extent of the law.

Unless otherwise stated the results shown in this test report refer only to the sample(s) tested and such sample(s) are retained for 30 days only.