

# SPEC SHEET + MEASUREMENTS

**PORT&CO.**

Port & Co<sup>™</sup> Performance Sleeveless Tee. PC380SL

## Product photo



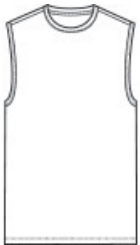
Rated UPF50 to help combat harmful UV rays, this tee also performs with Dry Zone<sup>®</sup> moisture-wicking technology to keep you cool, dry and comfortable.

- 3.8-ounce, 100% polyester
- Removable tag for comfort and relabeling
- UPF rating of 50
- Self-fabric trim at neckline
- Self-fabric binding at armholes

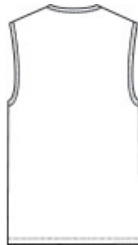
## CARE INSTRUCTIONS

Machine Wash Cold, Inside Out With Like Colors. Do Not Use Fabric Softener. Only Non-Chlorine Bleach When Needed. Tumble Dry Low. Do Not Iron.

## Sketches



front



back

# SPEC SHEET + MEASUREMENTS

**PORT&CO.**

Port & Co<sup>™</sup> Performance Sleeveless Tee. PC380SL

## PRODUCT MEASUREMENTS

	XS	S	M	L	XL	2XL	3XL	4XL	5XL
Body Length at Back	27	28	29	30	31	32	32 1/2	33	33 1/2
Chest Width	17	18 1/2	20	21 1/2	23	24 1/2	26 1/2	28 1/2	30 1/2

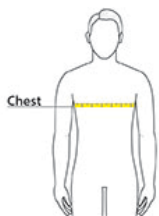
**Body Length at Back:** Measured from high point shoulder to finished hem at back.

**Chest Width:** Measured across the chest one inch below armhole when laid flat.

## SIZE CHARTS

	S	M	L	XL	2XL	3XL	4XL
Chest	35-37	38-40	41-43	44-46	47-49	50-53	54-57

## HOW TO MEASURE



### CHEST

Measure under the arm and around the fullest part of the chest with arms down, keeping tape horizontal.

# SPEC SHEET + MEASUREMENTS



Port & Co<sup>™</sup> Performance Sleeveless Tee. PC380SL

## COLORS

						
Charcoal PMS 4294C	Jet Black PMS BLACK C	Red PMS 200C	Silver	True Navy PMS 533C	True Royal PMS 7687C	White