

SPEC SHEET + MEASUREMENTS

PORT AUTHORITY.

Port Authority® Women's Microfleece Jacket. L223

Product photo



For cool-to-cold weather, this lightweight microfleece jacket delivers warmth without unnecessary bulk. Perfect alone or layered, it's a great value and it features clear coil zippers with dyed-to-match chain stitching and taping. An anti-pill finish helps preserve a clean appearance.

- 4.6-ounce, 100% polyester microfleece
- Non-zippered front pockets
- Open cuffs and hem

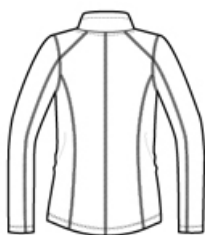
CARE INSTRUCTIONS

Machine Wash Cold Separately Only Non-Chlorine Bleach
When Needed Tumble Dry Low Cool iron if necessary

Sketches



front



back

SPEC SHEET + MEASUREMENTS

PORT AUTHORITY

Port Authority® Women's Microfleece Jacket. L223

PRODUCT MEASUREMENTS

	XS	S	M	L	XL	XXL	3XL	4XL
Bust	18 1/2	19 1/2	20 1/2	22	23 1/2	25	27	29
Sleeve Length	31 3/4	32 1/4	32 3/4	33 1/2	34 1/4	35	35 1/2	36
Body Length at Back	25 1/2	26	26 1/2	27 1/2	28 1/2	29 1/2	30	30 1/2

Bust: Measured across the chest one inch below armhole when laid flat.

Sleeve Length: Start at center of neck and measure down shoulder, down sleeve to hem.

Body Length at Back: Measured from high point shoulder to finished hem at back.

SIZE CHARTS

	XS	S	M	L	XL	XXL	3XL	4XL
Size	2	4/6	8/10	12/14	16/18	20/22	24/26	28/30
Bust	32-34	35-36	37-38	39-41	42-44	45-47	48-51	52-55

SPEC SHEET + MEASUREMENTS

PORT AUTHORITY.

Port Authority® Women's Microfleece Jacket. L223

HOW TO MEASURE



BUST

Measure under the arm and around the fullest part of the bust with arms down, keeping tape horizontal.

COLORS



Amethyst
Purple
PMS 7665C



Black
PMS BLACK
C



Light Royal
PMS 7685C



Pearl Grey
PMS 424 C



True Navy
PMS 5255C



White