

# SPEC SHEET + MEASUREMENTS

PORT AUTHORITY.

## Port Authority® Hooded Core Soft Shell Jacket. J335

### Product photo



An attached hood and bold colorblocking give this well-priced, wind-resistant, water-repellent soft shell extra rain-shielding protection and strong style.

- 100% polyester woven shell bonded to a water-resistant film insert and a 100% polyester microfleece lining
- 1000MM fabric waterproof rating
- 1000G/M<sup>2</sup> fabric breathability rating
- Adjustable hood with locking drawcord to customize fit
- Reverse coil zippers
- Interior storm flap with chin guard
- Zippered right chest pocket
- Front zippered pockets
- Open hem with locking drawcord

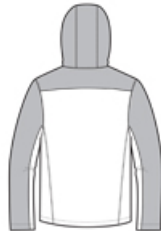
### CARE INSTRUCTIONS

Machine wash cold with like colors only. Non-chlorine bleach, when needed. Tumble dry low. Cool iron, if necessary.

### Sketches



front



back

# SPEC SHEET + MEASUREMENTS

PORT AUTHORITY

Port Authority® Hooded Core Soft Shell Jacket. J335

## PRODUCT MEASUREMENTS

	XS	S	M	L	XL	2XL	3XL	4XL
Chest	19	20 1/2	22	23 1/2	25	26 1/2	28 1/2	30 1/2
Sleeve Length	34 3/4	35 1/2	36 1/4	37	37 3/4	38 1/2	39 1/4	40
Body Length at Back	26 1/2	27 1/2	28 1/2	29 1/2	30 1/2	31 1/2	32	32 1/2

**Chest:** Measured across the chest one inch below armhole when laid flat.

**Sleeve Length:** Start at center of neck and measure down shoulder, down sleeve to hem.

**Body Length at Back:** Measured from high point shoulder to finished hem at back.

## SIZE CHARTS

	XS	S	M	L	XL	2XL	3XL	4XL
Chest	32-34	35-37	38-40	41-43	44-46	47-49	50-53	54-57

## HOW TO MEASURE



### CHEST

Measure under the arm and around the fullest part of the chest with arms down, keeping tape horizontal.

# SPEC SHEET + MEASUREMENTS

PORT AUTHORITY.

Port Authority® Hooded Core Soft Shell Jacket. J335

## COLORS



Black  
PMS BLACK  
C



Black/  
Battleship  
Grey  
PMS BLACK  
C



Dress  
Blue Navy/  
Battleship  
Grey  
PMS 533 C



Night Sky  
Blue/ Dress  
Blue Navy  
PMS 654 C