

SPEC SHEET + MEASUREMENTS

SPORT-TEK

Sport-Tek® Youth PosiCharge® Electric Heather Colorblock 1/4-Zip Pullover. YST397

Product photo



This lightweight pullover locks in color, wicks moisture and has an amped up colorblock look.

- 4.1-ounce, 100% polyester jersey with PosiCharge technology (Electric Heather)
- 4.7-ounce, 100% polyester jersey with PosiCharge technology (solid)
- Tear-away removable label
- Cadet collar
- Reverse coil zipper
- Colorblock on shoulders and sleeves
- Set-in sleeves
- Open cuffs and hem

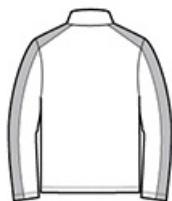
CARE INSTRUCTIONS

Machine wash cold with like colors: only non-chlorine bleached when needed, tumble dry low, do not use fabric softener, remove promptly, cool iron if necessary, do not dry clean.

Sketches



front



back

SPEC SHEET + MEASUREMENTS



Sport-Tek® Youth PosiCharge® Electric Heather Colorblock 1/4-Zip Pullover. YST397

PRODUCT MEASUREMENTS

	XS	S	M	L	XL
Size	4/5	6/8	10/12	14/16	18/20
Body Length at Back	19	21	23	25	27
Chest Width	14 1/4	15 3/4	17 1/4	18 1/4	19 3/4
Sleeve Length	22	25	27 1/2	30	33

Body Length at Back: Measured from high point shoulder to finished hem at back.

Chest Width: Measured across the chest one inch below armhole when laid flat.

Sleeve Length: Start at center of neck and measure down shoulder, down sleeve to hem.

SIZE CHARTS

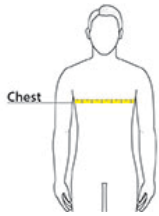
	XS	S	M	L	XL
Size	4/5	6/8	10/12	14/16	18/20
Chest	22-24	25-27	28-30	30-32	32-34

SPEC SHEET + MEASUREMENTS



Sport-Tek® Youth PosiCharge® Electric Heather Colorblock 1/4-Zip Pullover. YST397

HOW TO MEASURE



CHEST

Measure under the arm and around the fullest part of the chest with arms down, keeping tape horizontal.

COLORS



Black Electric/
Black
PMS BLACK
C



Grey-Black
Electric/ Black
PMS 431C



True Navy
Electric/ True
Navy
PMS 533C



True Royal
Electric/ True
Royal
PMS 7686C