

SPEC SHEET + MEASUREMENTS

PORT&CO.

Port & Co™ Core Fleece Crewneck Pocket Sweatshirt.
PC78PKT

Product photo



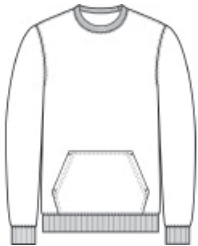
You asked. We listened. Now a cozy crew sweatshirt with a pocket in our core weight.

- 7.8-ounce, 50/50 cotton/poly fleece
- Air jet yarn for softness
- Front pouch pocket
- Tear-away label

CARE INSTRUCTIONS

Machine Wash Cold. Do Not Bleach. Tumble Dry Low. Cool Iron If Necessary.

Sketches



front



back

SPEC SHEET + MEASUREMENTS

PORT&CO.

Port & Co™ Core Fleece Crewneck Pocket Sweatshirt.
PC78PKT

PRODUCT MEASUREMENTS

	S	M	L	XL	2XL	3XL	4XL
Body Length at Back	27 1/2	28 1/2	29 1/2	30 1/2	31 1/2	32 1/2	33 1/2
Chest Width	20	22	24	26	28	30	32
Sleeve Length from Center Back	34 1/2	35 1/4	36	36 3/4	37 1/2	38 1/4	39

Body Length at Back: Measured from high point shoulder to finished hem at back.

Chest Width: Measured across the chest one inch below armhole when laid flat.

Sleeve Length from Center Back: Measure from Center Back neck to shoulder point to sleeve hem.

SIZE CHARTS

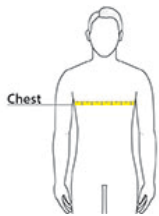
	XS	S	M	L	XL	2XL	3XL	4XL
Chest	32-34	35-37	38-40	41-43	44-46	47-49	50-53	54-57

SPEC SHEET + MEASUREMENTS

PORT&CO.

Port & Co™ Core Fleece Crewneck Pocket Sweatshirt.
PC78PKT

HOW TO MEASURE



CHEST

Measure under the arm and around the fullest part of the chest with arms down, keeping tape horizontal.

COLORS



Ash



Athletic Heather
PMS COOL
GRAY 7C



Dark Heather
Grey
PMS 7540C



Jet Black
PMS BLACK
C



Oatmeal
Heather



Olive Drab
Green
PMS 7771C



Pale Blush
PMS 5025C

PalePink



Red
PMS 200C



SGreen



True Navy
PMS 533C



True Royal
PMS 7687C



White