

SPEC SHEET + MEASUREMENTS

SPORT-TEK

Sport-Tek® Triumph 1/4-Zip Pullover. ST281

Product photo



This double knit, cotton-rich pullover is a triumph with integrated pockets and rubberized zippers for a modern look and feel.

- 7.1-ounce, 71/29 cotton/poly double-knit fleece
- Cadet collar
- Tag-free label
- Rubberized center front zipper
- Front pouch pocket with integrated rubberized zippered pocket

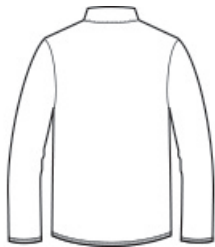
CARE INSTRUCTIONS

Machine wash cold with like colors; do not use fabric softener; only non-chlorine bleach, when needed; tumble dry low; remove promptly; cool iron, if necessary; do not dry clean.

Sketches



front



back

SPEC SHEET + MEASUREMENTS



Sport-Tek® Triumph 1/4-Zip Pullover. ST281

PRODUCT MEASUREMENTS

	XS	S	M	L	XL	2XL	3XL	4XL
Body Length at Back	28 1/4	29 1/4	30 1/4	31 1/4	32 1/4	33 1/4	33 3/4	34 1/4
Chest Width	20	21 1/2	23	24 1/2	26	27 1/2	29 1/2	31 1/2
Sleeve Length	34 1/2	35 1/4	36	36 3/4	37 1/2	38 1/4	39	39 3/4

Body Length at Back: Measured from high point shoulder to finished hem at back.

Chest Width: Measured across the chest one inch below armhole when laid flat.

Sleeve Length: Start at center of neck and measure down shoulder, down sleeve to hem.

SIZE CHARTS

	XS	S	M	L	XL	2XL	3XL	4XL
Chest	32-34	35-37	38-40	41-43	44-46	47-49	50-53	54-57

SPEC SHEET + MEASUREMENTS



Sport-Tek® Triumph 1/4-Zip Pullover. ST281

HOW TO MEASURE



CHEST

Measure under the arm and around the fullest part of the chest with arms down, keeping tape horizontal.

COLORS



Black
PMS BLACK
C



Black Heather
PMS BLACK
C



Dark Grey
Heather
PMS COOL
GRAY 11C



Navy
PMS 5255C



Olive Heather
PMS 7764C