

# SPEC SHEET + MEASUREMENTS

PORT AUTHORITY.

## Port Authority® Women's Breakwater Open Cardigan. LK820

### Product photo



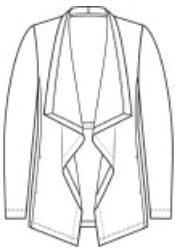
This crowd-pleasing cardigan, with its subtle slub texture, offers a carefree layering option for the office or any casual setting.

- 6.3-ounce, 60/40 cotton/polyester
- Open front
- Shawl collar with waterfall lapels
- Set-in sleeves
- Side seam pockets
- Elastic at back waist for subtle shaping
- Self-turned cuffs and hem

### CARE INSTRUCTIONS

Machine Wash Cold With Like Colors. Do Not Bleach. Tumble Dry Low. Remove Promptly. Cool Iron If Necessary.

### Sketches



front



back

# SPEC SHEET + MEASUREMENTS

PORT AUTHORITY

Port Authority® Women's Breakwater Open Cardigan.  
LK820

## PRODUCT MEASUREMENTS

	XS	S	M	L	XL	XXL	3XL	4XL
Size	2	4/6	8/10	12/14	16/18	20/22	24/26	28/30
Body Length at Back	29 3/4	30 1/4	30 3/4	31 1/4	31 3/4	32 1/4	32 3/4	33 1/4
Bust	17	18	19	20 1/2	22	23 1/2	25 1/2	27 1/2
Sleeve Length from Center Back	31 1/2	32	32 1/2	33 1/8	33 3/4	34 3/8	34 3/4	35 1/8

**Body Length at Back:** Measured from high point shoulder to finished hem at back.

**Bust:** Measured across the chest one inch below armhole when laid flat.

**Sleeve Length from Center Back:** Measure from Center Back neck to shoulder point to sleeve hem.

## SIZE CHARTS

	XS	S	M	L	XL	XXL	3XL	4XL
Size	2	4/6	8/10	12/14	16/18	20/22	24/26	28/30
Bust	32-34	35-36	37-38	39-41	42-44	45-47	48-51	52-55

# SPEC SHEET + MEASUREMENTS

PORT AUTHORITY

Port Authority® Women's Breakwater Open Cardigan.  
LK820

## HOW TO MEASURE

---



### BUST

Measure under the arm and around the fullest part of the bust with arms down, keeping tape horizontal.

## COLORS

---



Deep Black  
PMS BLACK  
C



Dusk Blue  
PMS 2374C



Grey Steel  
PMS 426C



Parchment