

PORT AUTHORITY

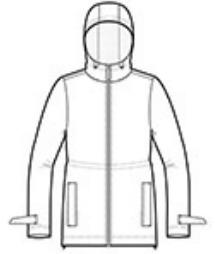
# Port Authority® Women's Northwest Slicker. L7710

We reinvented our classic rain jacket with this critically seam-sealed slicker that features water resistance, a soft hand feel and reflective details for enhanced visibility and a modern look.

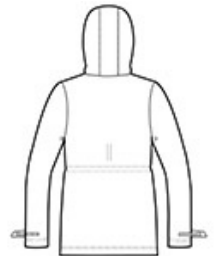
- 100% PU-coated polyester
- 100% polyester mesh-lined body and hood
- 100% polyester-lined sleeves
- 1500MM fabric waterproof rating
- Attached hood with adjustable locking draw cord
- Molded zipper
- Grommets for breathability under arms
- Longer length with adjustable locking draw cord waist
- Adjustable self-fabric tab cuffs with hook and loop closures and reflective detail
- Front zippered pockets with reflective detail
- Port Pocket™ for decoration access
- Open hem with adjustable locking draw cord
- Reflective details at back

#### CARE INSTRUCTIONS

Machine wash cold. Only non-chlorine bleach when needed.  
Line dry. Do not iron. Do not dry clean.

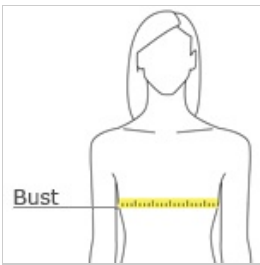


front



back

#### HOW TO MEASURE



#### BUST

Measure under the arm and around the fullest part of the bust with arms down, keeping tape horizontal.

#### SIZE CHART

	XS	S	M	L	XL	XXL	3XL	4XL
Size	2	4/6	8/10	12/14	16/18	20/22	24/26	28/30
Bust	32-34	35-36	37-38	39-41	42-44	45-47	48-51	52-55

#### COLOR INFORMATION

Please note: PMS code information is shown only when an exact match is available.



Black  
PMS BLACK C



Navy  
PMS 532C



Northern Grey  
PMS 424C