

# SPEC SHEET + MEASUREMENTS

*Brooks Brothers*

## Brooks Brothers® Bomber Jacket. BB18604

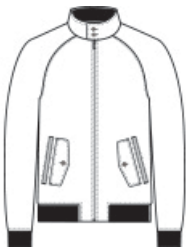
### Product photo



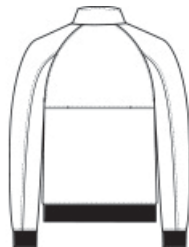
An enduring classic, combining timeless styling with modern performance. The iconic look of this American bomber silhouette is accentuated with impeccable detail.

- 100% polyester shell with a durable water repellent (DWR) finish
- 65/35 polyester/cotton Brooks Brothers tartan plaid lining
- 3K/3K waterproof breathable shell fabric
- Metallion coil front zipper with metal Brooks Brothers Golden Fleece logo zipper pull and piped kissing welt
- Tab collar with faux horn Brooks Brothers logo buttons
- Rib knit cuffs, hem and inside collar
- Raglan sleeves with articulated elbows for ease of movement
- Cape back allows venting for comfort
- Double hand pockets: one flap-secured with faux horn Brooks Brothers logo button, the second alongside it with double kissing welt
- Faux leather label patch
- Brooks Brothers tie-stripe hanging loop
- Interior chest patch pocket with faux horn Brooks Brothers logo button closure
- Brooks Brothers tartan plaid inside hand pockets
- Burgundy piping throughout
- Decoration access pocket

### Sketches



front



back

### CARE INSTRUCTIONS

# SPEC SHEET + MEASUREMENTS



## Brooks Brothers® Bomber Jacket. BB18604

Machine Wash Cold With Like Colors. Do Not Use Fabric Softener. Do Not Bleach. Tumble Dry Low. Do Not Iron. Do Not Dry Clean.

### PRODUCT MEASUREMENTS

	XS	S	M	L	XL	2XL	3XL	4XL
Body Length at Back	25 1/2	26	26 1/2	27	27 1/2	28	28 1/2	29
Chest	20	21 1/2	23	24 1/2	26 1/2	28 1/2	31	34
Sleeve Length from Center Back	34 1/4	35	35 3/4	36 1/2	37 1/4	38	38 3/4	39 1/2

**Body Length at Back:** Measured from high point shoulder to finished hem at back.

**Chest:** Measured across the chest one inch below armhole when laid flat.

**Sleeve Length from Center Back:** Measure from Center Back neck to shoulder point to sleeve hem.

### SIZE CHARTS

	XS	S	M	L	XL	2XL	3XL	4XL
Chest	32-34	35-37	38-40	41-43	44-47	48-51	52-56	57-61

# SPEC SHEET + MEASUREMENTS

*Brooks Brothers*

Brooks Brothers® Bomber Jacket. BB18604

## HOW TO MEASURE

---



### CHEST

Measure under the arm and around the fullest part of the chest with arms down, keeping tape horizontal.

## COLORS

---



Deep Black  
PMS BLACK  
C



Night Navy  
PMS 4280C