

SPEC SHEET + MEASUREMENTS



OGIO® Radius 1/4-Zip. OE550

Product photo



STAY-COOL WICKING
LAYERABLE WARMTH
STRETCH
FLATLOCK SEAMS FOR COMFORT
REFLECTIVE DETAILS

- 6.7-ounce, 91/9 poly/spandex jersey with stay-cool wicking technology
- Reflective OGIO heat transfer label for tag-free comfort
- Zip-through cadet collar with molded cord pull
- Reflective O heat transfer at back neck
- Raglan sleeves with shaped cuffs
- Drop tail hem with reflective stacked O heat transfers at lower back panels
- Reflective O heat transfer at front left hem

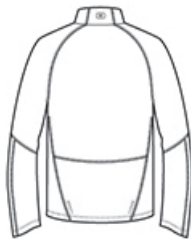
CARE INSTRUCTIONS

Machine wash cold with like colors. Do not bleach. Tumble dry low. Cool iron. Do not use fabric softener. Do not dry clean.

Sketches



front



back

SPEC SHEET + MEASUREMENTS



OGIO® Radius 1/4-Zip. OE550

PRODUCT MEASUREMENTS

	XS	S	M	L	XL	2XL	3XL	4XL
Chest Width	18 1/2	20	21 1/2	23	24 1/2	26	28	30
Body Length at Back	27	28	29	30	31	32	32 1/2	33
Sleeve Length from Center Back	33 1/4	34	34 3/4	35 1/2	36 1/4	37	37 3/4	36 1/2

Chest Width: Measured across the chest one inch below armhole when laid flat.

Body Length at Back: Measured from high point shoulder to finished hem at back.

Sleeve Length from Center Back: Measure from Center Back neck to shoulder point to sleeve hem.

SIZE CHARTS

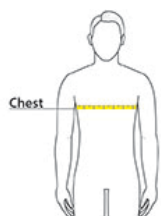
	XS	S	M	L	XL	2XL	3XL	4XL
Chest	32-34	35-37	38-40	41-43	44-46	47-49	50-53	54-57

SPEC SHEET + MEASUREMENTS



OGIO® Radius 1/4-Zip. OE550

HOW TO MEASURE



CHEST

Measure under the arm and around the fullest part of the chest with arms down, keeping tape horizontal.

COLORS



Blacktop
PMS BLACK
C



Electric Blue
PMS 2145C



Gear Grey
PMS 425C