

SPEC SHEET + MEASUREMENTS



Carhartt® Super Dux™ Soft Shell Vest. CT105535

Product photo



This soft shell vest combines iconic Carhartt looks with unbeatable weather protection. The nylon is 35% lighter than traditional duck but with twice the abrasion resistance.

- 8.1-ounce, 97/3 nylon/elastane
- 100% polyester stretch taffeta lining
- Rain Defender® durable water repellent
- Wind Fighter® technology tames wind
- Rugged Flex® technology for ease of movement
- Reverse coil center front zipper with kissing welt
- Zip-through cadet collar
- Secure interior pockets
- Two lower front pockets
- Drop tail hem for added coverage
- Carhartt-strong, triple-stitched main seams
- Carhartt label sewn on left pocket

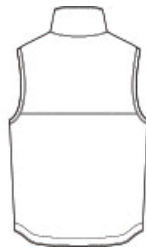
CARE INSTRUCTIONS

Machine Wash Warm Like Colors. Non-Chlorine Bleach. Tumble Dry Low. Do Not Use Fabric Softeners. Cool Iron. Do Not Dry Clean. Exclusive Trimming.

Sketches



front



back

SPEC SHEET + MEASUREMENTS



Carhartt® Super Dux™ Soft Shell Vest. CT105535

PRODUCT MEASUREMENTS

	S	M	L	XL	2XL	3XL
Body Length at Back	26 1/4	27 1/2	27 3/4	29	29 1/4	30 1/2
Chest	21 1/2	23 1/2	25 1/2	27 1/2	29 1/2	31 1/2

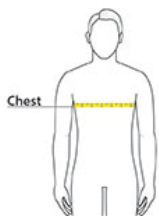
Body Length at Back: Measured from high point shoulder to finished hem at back.

Chest: Measured across the chest one inch below armhole when laid flat.

SIZE CHARTS

	S	M	L	XL	2XL	3XL
Chest	34-36	38-40	42-44	46-48	50-52	54-56

HOW TO MEASURE



CHEST

Measure under the arm and around the fullest part of the chest with arms down, keeping tape horizontal.

SPEC SHEET + MEASUREMENTS



Carhartt® Super Dux™ Soft Shell Vest. CT105535

COLORS



Black
PMS BLACK
C



Gravel
PMS 11C



Greige
PMS COOL
GRAY 1C



Navy
PMS 533C