

SPEC SHEET + MEASUREMENTS



OGIO® Women's Hinge Full-Zip. LOG820

Product photo



When your style hinges on looking sophisticated and modern, this subtly textured jacket that hits the mark with moisture-wicking and stretch performance.

- 6-ounce, 100% poly
- Baseball-inspired collar
- OGIO heat transfer label for tag-free comfort
- Exposed polished molded zipper with locking zipper pull
- Sits at high hip
- Angled back seaming details
- Black reflective O heat transfer on front left hem

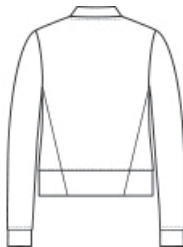
CARE INSTRUCTIONS

Machine cold with like colors. Do not use fabric softener. Do not bleach. Tumble dry low. Cool iron if necessary. Do not dry clean.

Sketches



front



back

SPEC SHEET + MEASUREMENTS



OGIO® Women's Hinge Full-Zip. LOG820

PRODUCT MEASUREMENTS

	XS	S	M	L	XL	2XL	3XL	4XL
Body Length at Back	24	24 1/2	25	25 1/2	26	26 1/2	27	27 1/2
Bust	18	19	20	21 1/2	23	24 1/2	26 1/2	28 1/2
Sleeve Length from Center Back	32	32 1/2	33	33 5/8	34 1/4	34 7/8	35 1/4	35 5/8

Body Length at Back: Measured from high point shoulder to finished hem at back.

Bust: Measured across the chest one inch below armhole when laid flat.

Sleeve Length from Center Back: Measure from Center Back neck to shoulder point to sleeve hem.

SIZE CHARTS

	XS	S	M	L	XL	2XL	3XL	4XL
Bust	32-34	35-37	38-40	41-43	44-46	47-49	50-53	54-57

SPEC SHEET + MEASUREMENTS



OGIO® Women's Hinge Full-Zip. LOG820

HOW TO MEASURE



BUST

Measure under the arm and around the fullest part of the bust with arms down, keeping tape horizontal.

COLORS



Blacktop
PMS BLACK
C



River Blue
Navy
PMS 533C



Tarmac Grey
PMS 7540C