



Test Report

No.T32220260798TC

Date: MAY 05, 2022

Page 1 of 9

KOOZIE GROUP

14421 MYERLAKE CIRCLE CLEARWATER,
PINELLAS,FL 33760,UNITED STATES

The following samples were submitted and identified by/on behalf of the client as:

KOOZIE® TIE DYE CAN KOOLER

Item No. : 46407
 Manufacture Date : 2022
 Test Request Form No. : 5406_HK
 Shipment Order Number : 7153988
 Country of Origin : CHINA
 Country of Destination : CANADA, UNITED STATES
 Sample Receiving Date : APR 18, 2022
 Testing Period : APR 18, 2022 TO MAY 05, 2022

Test Requested		Conclusion
1.	CPSIA section 108 – Phthalates	PASS
	US 16 CFR Part 1307 – Phthalates	PASS
	US California Proposition 65 (County of Santa Clara Case No. 1-12-CV-230462 & County of San Francisco Case No. CGC-14-541130) – Phthalates Content	PASS
2.	Title 16, Code of Federal Regulations, Chapter II - Consumer Products Safety Commission of U.S.A. - Part 1303 - Ban of Lead - Containing Paint and Certain Consumer Products Bearing Lead - Containing Paint – Lead Content	PASS
3.	CPSIA section 101 - Total Lead content (Selected test items as specified by the applicant, please refer to test result page(s) for details)	--
3.1	CPSIA section 101(f) (1) – Lead in paint/similar surface coating material	PASS
3.2	CPSIA section 101(a) (2) – Lead in accessible substrate materials (Including Children’s Metal Jewelry)	PASS

This document is issued by the Company subject to its General Conditions of Service printed overleaf, available on request or accessible at <http://www.sgs.com/en/Terms-and-Conditions.aspx> and, for electronic format documents, subject to Terms and Conditions for Electronic Documents at <http://www.sgs.com/en/Terms-and-Conditions/Terms-e-Document.aspx>. Attention is drawn to the limitation of liability, indemnification and jurisdiction issues defined therein. Any holder of this document is advised that information contained hereon reflects the Company’s findings at the time of its intervention only and within the limits of Client’s instructions, if any. The Company’s sole responsibility is to its Client and this document does not exonerate parties to a transaction from exercising all their rights and obligations under the transaction documents. This document cannot be reproduced except in full, without prior written approval of the Company. Any unauthorized alteration, forgery or falsification of the content or appearance of this document is unlawful and offenders may be prosecuted to the fullest extent of the law.

Unless otherwise stated the results shown in this test report refer only to the sample(s) tested and such sample(s) are retained for 30 days only.



Test Requested	Conclusion
4. US California Proposition 65 (Out-of-court Settlement for tool bags/holders, combo bags, construction bags, tote bags, and other bags used to carry tools or other objects) – Lead Content in the specified specimen(s) as listed	PASS
5. Canada Consumer Product Safety Act (S.C. 2010, c. 21), Toys Regulations (SOR/2011-17) amended up to January 11, 2019 (Including amendments SOR/2012-71, SOR/2016-195, SOR/2016-302 and SOR/2018-138) - Section 23 (a) and Section 23 (c) - Lead and Mercury in surface coating material	PASS

***** FOR FURTHER DETAILS, PLEASE REFER TO THE FOLLOWING PAGE(S) *****

Signed for and on behalf of
SGS Hong Kong Ltd.



To Man Wah, Po
Technical Manager

This document is issued by the Company subject to its General Conditions of Service printed overleaf, available on request or accessible at <http://www.sgs.com/en/Terms-and-Conditions.aspx> and, for electronic format documents, subject to Terms and Conditions for Electronic Documents at <http://www.sgs.com/en/Terms-and-Conditions/Terms-e-Documents.aspx>. Attention is drawn to the limitation of liability, indemnification and jurisdiction issues defined therein. Any holder of this document is advised that information contained hereon reflects the Company's findings at the time of its intervention only and within the limits of Client's instructions, if any. The Company's sole responsibility is to its Client and this document does not exonerate parties to a transaction from exercising all their rights and obligations under the transaction documents. This document cannot be reproduced except in full, without prior written approval of the Company. Any unauthorized alteration, forgery or falsification of the content or appearance of this document is unlawful and offenders may be prosecuted to the fullest extent of the law.

Unless otherwise stated the results shown in this test report refer only to the sample(s) tested and such sample(s) are retained for 30 days only.

Test Results:
Phthalates Content

Method: With reference to CPSC-CH-C1001-09.4

Analysis was performed by Gas Chromatography Mass Spectrometer (GC-MS)

Accessible Materials can be placed in the Mouth

Test Item(s)	CAS No.	Result(s) (%)		MDL (%)
Specimen No.	--	1	2	--
Dibutyl Phthalate (DBP)	84-74-2	ND	ND	0.003
Benzylbutyl Phthalate (BBP)	85-68-7	ND	ND	0.003
Bis-(2-ethylhexyl) Phthalate (DEHP)	117-81-7	ND	ND	0.003
Diisononyl Phthalate (DINP)	28553-12-0 68515-48-0	ND	ND	0.010
Di-n-octyl Phthalate (DNOP)	117-84-0	ND	ND	0.003
Diisodecyl Phthalate (DIDP)	26761-40-0 68515-49-1	ND	ND	0.010
Di-n-Hexyl phthalate (DHP/DnHP)	84-75-3	ND	ND	0.003
Diisobutyl phthalate (DIBP)	84-69-5	ND	ND	0.003
Di-n-pentyl phthalate (DPP/DPenP)	131-18-0	ND	ND	0.003
Dicyclohexyl phthalate (DCHP)	84-61-7	ND	ND	0.003

Test Item(s)	CAS No.	Result(s) (%)		MDL (%)
Specimen No.	--	3	4	--
Dibutyl Phthalate (DBP)	84-74-2	ND	ND	0.003
Benzylbutyl Phthalate (BBP)	85-68-7	ND	ND	0.003
Bis-(2-ethylhexyl) Phthalate (DEHP)	117-81-7	ND	ND	0.003
Diisononyl Phthalate (DINP)	28553-12-0 68515-48-0	ND	ND	0.010
Di-n-octyl Phthalate (DNOP)	117-84-0	ND	ND	0.003
Diisodecyl Phthalate (DIDP)	26761-40-0 68515-49-1	ND	ND	0.010
Di-n-Hexyl phthalate (DHP/DnHP)	84-75-3	ND	ND	0.003
Diisobutyl phthalate (DIBP)	84-69-5	ND	ND	0.003
Di-n-pentyl phthalate (DPP/DPenP)	131-18-0	ND	ND	0.003
Dicyclohexyl phthalate (DCHP)	84-61-7	ND	ND	0.003

Specimen Description:

1. White knitting w/ blue printing w/ cream foam w/ black knitting backing (Body) (#1-46407 Royal Polyester Body Outer)
2. White knitting w/ green printing w/ cream foam w/ black knitting backing (Body) (#2-46407 Green Polyester Body Outer)

This document is issued by the Company subject to its General Conditions of Service printed overleaf, available on request or accessible at <http://www.sgs.com/en/Terms-and-Conditions.aspx> and, for electronic format documents, subject to Terms and Conditions for Electronic Documents at <http://www.sgs.com/en/Terms-and-Conditions/Terms-e-Documents.aspx>. Attention is drawn to the limitation of liability, indemnification and jurisdiction issues defined therein. Any holder of this document is advised that information contained hereon reflects the Company's findings at the time of its intervention only and within the limits of Client's instructions, if any. The Company's sole responsibility is to its Client and this document does not exonerate parties to a transaction from exercising all their rights and obligations under the transaction documents. This document cannot be reproduced except in full, without prior written approval of the Company. Any unauthorized alteration, forgery or falsification of the content or appearance of this document is unlawful and offenders may be prosecuted to the fullest extent of the law.

Unless otherwise stated the results shown in this test report refer only to the sample(s) tested and such sample(s) are retained for 30 days only.

Specimen Description:

- 3. White knitting w/ black printing w/ cream foam w/ black knitting backing (Body) (#3-46407 Black Polyester Body Outer)
- 4. Black fabric w/ black, white coating on fabric (Sewn-in label) (#5-46407 Sewn Labels)

- Note:
- % = percentage by weight
 - MDL = Method Detection Limit
 - ND = Not Detected (lower than MDL)

The Phthalates Content Requirement(s) is(are) Summarize as below:

Requirement(s)	Permissible Limit
Consumer Product Safety Improvement Act of 2008	
- Toys for children up to 12 or childcare articles for children up to 3	- DEHP, BBP or DBP ≤ 0.1%
- Toys for children up to 12 that can be placed in the mouth or childcare articles for children up to 3	- DINP, DNOP or DIDP ≤ 0.1%
US 16 CFR Part 1307	
- Toys for children up to 12 or childcare articles for children up to 3	- DEHP, BBP, DBP, DINP, DIBP, DPENP, DHEXP, and DCHP ≤ 0.1%
California Proposition 65 (County of Santa Clara Case No. 1-12-CV-230462)	
- Automobile accessories including dashboard-related items - Watches, - Clocks - Ear plugs, buds and related accessories - Temporary tattoos - Charms - Plastic figures and small novelties - Stationery- related items/sundries - Bathroom accessories - Kitchen floor and door/welcome mats	≤ 0.1% DEHP (For Bandage) ≤ 0.1% DEHP, BBP, DBP(For other product)
California Proposition 65 (County of San Francisco Case No. CGC-14-541130)	
- Bag with vinyl/PVC components - Gamepacks (carrying case/travel bag) - Game controller cables - Controller cases - Vinyl/PVC toppers on stylus	≤ 0.1% DEHP, DBP, BBP, DIDP, DINP and DnHP

This document is issued by the Company subject to its General Conditions of Service printed overleaf, available on request or accessible at <http://www.sgs.com/en/Terms-and-Conditions.aspx> and, for electronic format documents, subject to Terms and Conditions for Electronic Documents at <http://www.sgs.com/en/Terms-and-Conditions/Terms-e-Documents.aspx>. Attention is drawn to the limitation of liability, indemnification and jurisdiction issues defined therein. Any holder of this document is advised that information contained hereon reflects the Company's findings at the time of its intervention only and within the limits of Client's instructions, if any. The Company's sole responsibility is to its Client and this document does not exonerate parties to a transaction from exercising all their rights and obligations under the transaction documents. This document cannot be reproduced except in full, without prior written approval of the Company. Any unauthorized alteration, forgery or falsification of the content or appearance of this document is unlawful and offenders may be prosecuted to the fullest extent of the law.

Unless otherwise stated the results shown in this test report refer only to the sample(s) tested and such sample(s) are retained for 30 days only.



Test Report

No.T32220260798TC

Date: MAY 05, 2022

Page 5 of 9

CPSC 16 CFR 1303 - Lead in Paint/Similar Surface Coating Materials

Method: With reference to CPSC-CH-E1003-09.1 - Standard Operating Procedure for Determining Lead (Pb) in Paint and Other Similar Surface Coatings

Test Item(s)	Lead (Pb)
Permissible Limit (ppm)	90
Specimen Description	Result(s) (ppm)
1. Black w/ white coating on fabric (Sewn-in label) (#5-46407 Sewn Labels)	ND

- Note:
- ppm = parts per million
 - ND = Not Detected (lower than MDL)
 - MDL = Method Detection Limit = 10 ppm
 - 1% = 10000 mg/kg = 10000 ppm

CPSIA - Lead in Paint/Similar Surface Coating Materials

Method: With reference to CPSC-CH-E1003-09.1 - Standard Operating Procedure for Determining Lead (Pb) in Paint and Other Similar Surface Coatings

Test Item(s)	Lead (Pb)
Permissible Limit (ppm)	90
Specimen Description	Result(s) (ppm)
1. Black w/ white coating on fabric (Sewn-in label) (#5-46407 Sewn Labels)	ND

- Note:
- ppm = parts per million
 - ND = Not Detected (lower than MDL)
 - MDL = Method Detection Limit = 10 ppm
 - 1% = 10000 mg/kg = 10000 ppm

This document is issued by the Company subject to its General Conditions of Service printed overleaf, available on request or accessible at <http://www.sgs.com/en/Terms-and-Conditions.aspx> and, for electronic format documents, subject to Terms and Conditions for Electronic Documents at <http://www.sgs.com/en/Terms-and-Conditions/Terms-e-Documents.aspx>. Attention is drawn to the limitation of liability, indemnification and jurisdiction issues defined therein. Any holder of this document is advised that information contained hereon reflects the Company's findings at the time of its intervention only and within the limits of Client's instructions, if any. The Company's sole responsibility is to its Client and this document does not exonerate parties to a transaction from exercising all their rights and obligations under the transaction documents. This document cannot be reproduced except in full, without prior written approval of the Company. Any unauthorized alteration, forgery or falsification of the content or appearance of this document is unlawful and offenders may be prosecuted to the fullest extent of the law.

Unless otherwise stated the results shown in this test report refer only to the sample(s) tested and such sample(s) are retained for 30 days only.

CPSIA - Lead in Accessible Substrate Materials

Method (non-metallic materials): With reference to CPSC-CH-E1002-08.3 - Standard Operation Procedure for Determining Total Lead (Pb) in Non-Metal Children Product

Test Item(s)	Lead (Pb)
Permissible Limit ** (ppm)	100
Specimen Description	Result(s) (ppm)
1. White knitting w/ blue printing w/ cream foam w/ black knitting backing (Body) (#1-46407 Royal Polyester Body Outer)	ND
2. White knitting w/ green printing w/ cream foam w/ black knitting backing (Body) (#2-46407 Green Polyester Body Outer)	ND
3. White knitting w/ black printing w/ cream foam w/ black knitting backing (Body) (#3-46407 Black Polyester Body Outer)	ND

** Permissible Limit applies to a children’s product manufactured after 14 August 2011 (Public Law 110-314 (Consumer Product Safety Improvement Act of 2008) and its Amendments Public Law 112-28)

- Note:
- ppm = parts per million
 - ND = Not Detected (lower than MDL)
 - MDL = Method Detection Limit = 10 ppm
 - 1% = 10000 mg/kg = 10000 ppm

This document is issued by the Company subject to its General Conditions of Service printed overleaf, available on request or accessible at <http://www.sgs.com/en/Terms-and-Conditions.aspx> and, for electronic format documents, subject to Terms and Conditions for Electronic Documents at <http://www.sgs.com/en/Terms-and-Conditions/Terms-e-Documents.aspx>. Attention is drawn to the limitation of liability, indemnification and jurisdiction issues defined therein. Any holder of this document is advised that information contained hereon reflects the Company’s findings at the time of its intervention only and within the limits of Client’s instructions, if any. The Company’s sole responsibility is to its Client and this document does not exonerate parties to a transaction from exercising all their rights and obligations under the transaction documents. This document cannot be reproduced except in full, without prior written approval of the Company. Any unauthorized alteration, forgery or falsification of the content or appearance of this document is unlawful and offenders may be prosecuted to the fullest extent of the law.

Unless otherwise stated the results shown in this test report refer only to the sample(s) tested and such sample(s) are retained for 30 days only.

US California Proposition 65 – Total Lead Content

Method: With reference to CPSC-CH-E1003-09.1 - Standard Operating Procedure for Determining Lead (Pb) in Paint and Other Similar Surface Coatings

Method (non-metallic materials): With reference to CPSC-CH-E1002-08.3 - Standard Operation Procedure for Determining Total Lead (Pb) in Non-Metal Children Product

Analysis was performed by Inductively Coupled Plasma Optical Emission Spectrometer (ICP-OES)

Test Item(s)	Lead (Pb)
Specimen Description	Result(s) (ppm)
1. White knitting w/ blue printing w/ cream foam w/ black knitting backing (Body) (#1-46407 Royal Polyester Body Outer)	ND
2. White knitting w/ green printing w/ cream foam w/ black knitting backing (Body) (#2-46407 Green Polyester Body Outer)	ND
3. White knitting w/ black printing w/ cream foam w/ black knitting backing (Body) (#3-46407 Black Polyester Body Outer)	ND
4. Black fabric (Sewn-in label) (#5 Sewn Labels)	ND
5. Black w/ white coating on fabric (Sewn-in label) (#5-46407 Sewn Labels)	ND

- Note:
- ppm = parts per million
 - ND = Not Detected (lower than MDL)
 - MDL = Method Detection Limit =10 ppm
 - 1% = 10000mg/kg=10000ppm

Remark: Summary of permissible limit(s) of Lead requirement otherwise warning label required.

Requirement(s)	Permissible Limit of Lead (ppm)	Effective Date
California Proposition 65 (Out-of-court Settlement for tool bags/holders, combo bags, construction bags, tote bags, and other bags used to carry tools or other objects)	90	Current

This document is issued by the Company subject to its General Conditions of Service printed overleaf, available on request or accessible at <http://www.sgs.com/en/Terms-and-Conditions.aspx> and, for electronic format documents, subject to Terms and Conditions for Electronic Documents at <http://www.sgs.com/en/Terms-and-Conditions/Terms-e-Documents.aspx>. Attention is drawn to the limitation of liability, indemnification and jurisdiction issues defined therein. Any holder of this document is advised that information contained hereon reflects the Company's findings at the time of its intervention only and within the limits of Client's instructions, if any. The Company's sole responsibility is to its Client and this document does not exonerate parties to a transaction from exercising all their rights and obligations under the transaction documents. This document cannot be reproduced except in full, without prior written approval of the Company. Any unauthorized alteration, forgery or falsification of the content or appearance of this document is unlawful and offenders may be prosecuted to the fullest extent of the law.

Unless otherwise stated the results shown in this test report refer only to the sample(s) tested and such sample(s) are retained for 30 days only.



Test Report

No.T32220260798TC

Date: MAY 05, 2022

Page 8 of 9

Canada Consumer Product Safety Act (S.C. 2010, c. 21), Toys Regulations (SOR/2011-17) amended up to January 11, 2019 (Including amendments SOR/2012-71, SOR/2016-195, SOR/2016-302 and SOR/2018-138) - Section 23 (a) and Section 23 (c) - Lead and Mercury in surface coating material

Method: With reference to Canada Health Product Safety Bureau, Reference Manual Book 5 – Laboratory Policies and Procedures, Part B: Test Methods Section, Method C-02.2:2017 and C-07:2019

Test Item(s)	Pb	Hg
Permissible Limit (mg/kg)	90	ND
Specimen Description	Result(s) (mg/kg)	
1. Black w/ white coating on fabric (Sewn-in label) (#5-46407 Sewn Labels)	ND	ND

- Note:
- mg/kg = milligram per kilogram
 - ND = Not Detected (lower than MDL)
 - MDL = Method Detection Limit
 - MDL for Pb = 10 mg/kg
 - MDL for Hg = 10 mg/kg
 - The action level of Mercury is 10 mg/kg according to the Industry guide to Health Canada's Safety Requirements for Children's Toys and Related Products, 2012

Remark:

When statement of conformity is made, unless the decision rule was mentioned in above specified test items, the decision rule would be based on the non-binary statement with guard band (is equal to the expanded measurement uncertainty with a 95% coverage probability, $w = U_{95}$) in ILAC-G8:09/2019 Clause 4.2.3.

"Pass - the measured value is within (or below / above) the acceptance limit, where the acceptance limit is below / above to the guard band." or "Pass - The measured values were observed in tolerance at the points tested. The specific false accept risk is up to 2.5%."

"Fail - the measured value is out of (or below / above) the tolerance limit added / subtracted to the guard band." or "Fail - One or more measured values were observed out of tolerance at the points tested". The specific false reject risk is up to 2.5%.

"Inconclusive – It is not possible to state the conformity. Either one or more measured values were observed in the portion of the expanded measurement uncertainty intervals at the points tested where the specific risk is up to 50%."

This document is issued by the Company subject to its General Conditions of Service printed overleaf, available on request or accessible at <http://www.sgs.com/en/Terms-and-Conditions.aspx> and, for electronic format documents, subject to Terms and Conditions for Electronic Documents at <http://www.sgs.com/en/Terms-and-Conditions/Terms-e-Documents.aspx>. Attention is drawn to the limitation of liability, indemnification and jurisdiction issues defined therein. Any holder of this document is advised that information contained hereon reflects the Company's findings at the time of its intervention only and within the limits of Client's instructions, if any. The Company's sole responsibility is to its Client and this document does not exonerate parties to a transaction from exercising all their rights and obligations under the transaction documents. This document cannot be reproduced except in full, without prior written approval of the Company. Any unauthorized alteration, forgery or falsification of the content or appearance of this document is unlawful and offenders may be prosecuted to the fullest extent of the law.

Unless otherwise stated the results shown in this test report refer only to the sample(s) tested and such sample(s) are retained for 30 days only.

Sample Picture (As received)

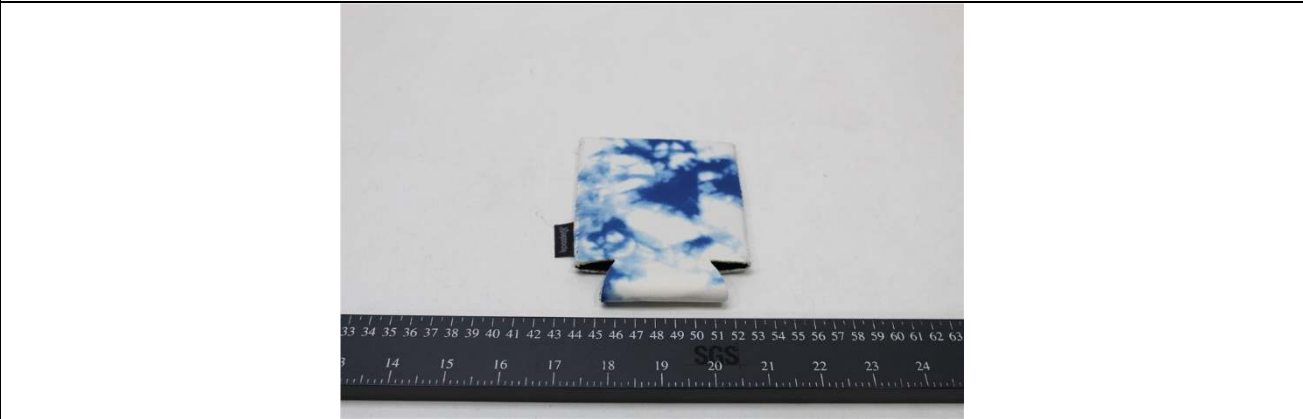
Pic.1



Pic.2



Pic.3



SGS authenticate the photo on original report only

*** End of Report ***

This document is issued by the Company subject to its General Conditions of Service printed overleaf, available on request or accessible at <http://www.sgs.com/en/Terms-and-Conditions.aspx> and, for electronic format documents, subject to Terms and Conditions for Electronic Documents at <http://www.sgs.com/en/Terms-and-Conditions/Terms-e-Documents.aspx>. Attention is drawn to the limitation of liability, indemnification and jurisdiction issues defined therein. Any holder of this document is advised that information contained hereon reflects the Company's findings at the time of its intervention only and within the limits of Client's instructions, if any. The Company's sole responsibility is to its Client and this document does not exonerate parties to a transaction from exercising all their rights and obligations under the transaction documents. This document cannot be reproduced except in full, without prior written approval of the Company. Any unauthorized alteration, forgery or falsification of the content or appearance of this document is unlawful and offenders may be prosecuted to the fullest extent of the law.

Unless otherwise stated the results shown in this test report refer only to the sample(s) tested and such sample(s) are retained for 30 days only.