



Brooks Brothers® Women's Full-Button Satin Blouse BB18007



Add a touch of sophistication with this versatile blouse, made from a soft satin fabric featuring a subtle sheen. Designed for a classic fit with traditional flair.

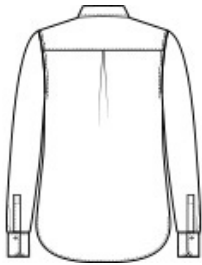
- 4.1-ounce, 100% polyester satin
- Anti-static finish
- Open collar
- French front placket
- Inverted box pleat
- Single-button cuffs
- Pearlized buttons

CARE INSTRUCTIONS

Machine Wash Cold With Like Colors. Do Not Bleach. Tumble Dry Low . Remove Promptly. Cool Iron If Necessary.



front



back

HOW TO MEASURE



BUST
Measure under the arm and around the fullest part of the bust with arms down, keeping tape horizontal.

SIZE CHART

	XS	S	M	L	XL	2XL	3XL	4XL
Size	2	4/6	8/10	12/14	16/18	20/22	24/26	28/30
Bust	32-34	35-36	37-38	39-41	42-44	45-47	48-51	52-55

COLOR INFORMATION

Please note: PMS code information is shown only when an exact match is available.



Deep Black
PMS BLACK C



Heritage Blue
PMS 2708C



Off White



Shadow Grey
PMS COOL GRAY
10C