



# Nike Club Fleece Sleeve Swoosh Pullover Hoodie NKDR1499



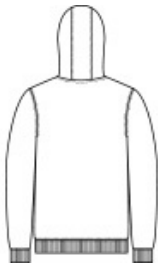
Combining classic Nike style w ith the soft comfort of brushed-back fleece, this premium hoodie is a closet staple. Jersey-lined, three-panel hood with dyed-to-match draw cords and front pouch pocket. Rib knit cuffs and hem. A contrast Sw oosh logo is embroidered on left sleeve. Made of 8.2-ounce, 80 cotton/polyester.

**CARE INSTRUCTIONS**

Machine Wash Cold (30c). Wash Inside Out. Wash With Like Colors. Do Not Use Softeners. Do Not Use Bleach. Tumble Dry Low . Do Not Iron. Do Not Dry Clean.



front



back

**HOW TO MEASURE**



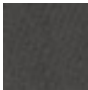
**CHEST WIDTH**  
Measure under the arm and around the fullest part of the chest with arms down n, keeping tape horizontal.

**SIZE CHART**


	XS	S	M	L	XL	2XL	3XL	4XL
Chest	32-35	35-37 1/2	37 1/2-41	41-44	44-48 1/2	48 1/2 -53 1/2	53 1/2 - 58	58-63

**COLOR INFORMATION**


Please note: PMS code information is shown only when an exact match is available.




Anthracite  
PMS 7540C




Black  
PMS BLACK C




Dark Grey Heather  
PMS 422C




Game Royal  
PMS 661C




Gorge Green  
PMS 350C



Midnight Navy  
PMS 2767C



University Red  
PMS 200C



White