

SPEC SHEET + MEASUREMENTS

SPORT-TEK

Sport-Tek® Sport-Wick® Stretch Full-Zip Cadet Jacket. ST857

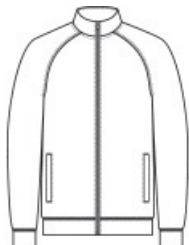
Product photo



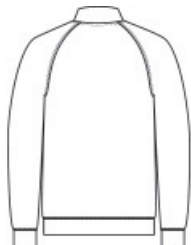
This moisture-wicking full-zip cadet jacket will help you stand out at the game.

- 6.8-ounce, 90/10 poly/spandex
- Raglan sleeves
- Side slash pockets
- Tag-free label

Sketches



front



back

SPEC SHEET + MEASUREMENTS



Sport-Tek® Sport-Wick® Stretch Full-Zip Cadet Jacket. ST857

PRODUCT MEASUREMENTS

	XS	S	M	L	XL	2XL	3XL	4XL
Body Length at Back	26	27	28	29	30	31	31 2/3	32
Chest	18 1/2	20	21 1/2	23	24 1/2	26	28	30
Raglans and Dolmans Sleeve Length	32 3/4	33 1/2	34 1/4	25	35 3/4	36 1/2	37 1/4	38

Body Length at Back: Measured from high point shoulder to finished hem at back.

Chest: Measured across the chest one inch below armhole when laid flat.

Raglans and Dolmans Sleeve Length: Measure from neck edge to finished hem.

SIZE CHARTS

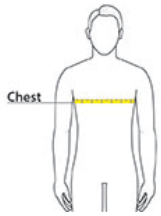
	XS	S	M	L	XL	2XL	3XL	4XL
Chest	32-34	35-37	38-40	41-43	44-46	47-49	50-53	54-57

SPEC SHEET + MEASUREMENTS



Sport-Tek® Sport-Wick® Stretch Full-Zip Cadet Jacket.
ST857

HOW TO MEASURE



CHEST

Measure under the arm and around the fullest part of the chest with arms down, keeping tape horizontal.

COLORS



Black
PMS BLACK
C



Charcoal Grey



Charcoal Grey
Heather



Deep Red
PMS 201C



True Navy
PMS 533C



True Royal
PMS 7687C