

## SPEC SHEET + MEASUREMENTS



### District® Youth Perfect Tri® Long Sleeve Hoodie. DT139Y

#### Product photo



A lightweight tri-blend essential that's perfect all year round.

- 4.5-ounce, 50/25/25 poly/combed ring spun cotton/rayon, 32 singles
- Tear-away label
- Shoulder to shoulder taping

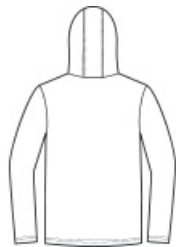
#### CARE INSTRUCTIONS

Machine wash cold with like colors. Non-chlorine bleach when needed. Tumble dry low. Cool iron if necessary.

#### Sketches



front



back

# SPEC SHEET + MEASUREMENTS



District® Youth Perfect Tri® Long Sleeve Hoodie. DT139Y

## PRODUCT MEASUREMENTS

	XS	S	M	L	XL
Size	2	4/6	8/10	12/14	16/18
Body Length at Back	19	21	23	25	27
Chest Width	13 1/2	15	16 1/2	17 1/2	19
Sleeve Length	22	25	27 1/2	30	33

**Body Length at Back:** Measured from high point shoulder to finished hem at back.

**Chest Width:** Measured across the chest one inch below armhole when laid flat.

**Sleeve Length:** Start at center of neck and measure down shoulder, down sleeve to hem.

## SIZE CHARTS

	XS	S	M	L	XL
Size	4/5	6/8	10/12	14/16	18/20
Chest	22-24	25-27	28-30	30-32	32-34

# SPEC SHEET + MEASUREMENTS



District® Youth Perfect Tri® Long Sleeve Hoodie. DT139Y

## HOW TO MEASURE

---



### CHEST

Measure under the arm and around the fullest part of the chest with arms down, keeping tape horizontal.

## COLORS

---



Black Frost  
PMS 426C



Deep Royal  
PMS 7687C



Grey Frost  
PMS COOL  
GREY 11C



Navy Frost  
PMS 2379C



White