

SPEC SHEET + MEASUREMENTS

PORT AUTHORITY.

Port Authority® Essential Rain Jacket. J407

Product photo



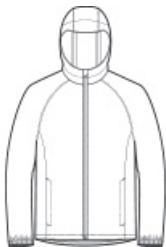
A year-round must-have, this fully seam-sealed 8K/5K waterproof, breathable 2.5-layer jacket has a DWR finish. It packs easily and gives great water-repellent, wind-resistant performance.

- 100% polyester shell bonded to a waterproof laminate film with DWR finish
- 8,000MM fabric waterproof rating
- 5,000G/M² fabric breathability rating
- Interior grid print
- Waterproof center front zipper
- Interior storm flap with chin guard
- Front zippered pockets
- Elastic cuffs

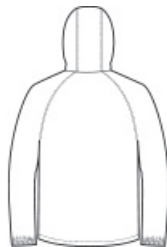
CARE INSTRUCTIONS

Machine wash cold with like colors. Only non-chlorine bleach when needed. Tumble dry low. Cool iron if necessary. Do not Dry Clean.

Sketches



front



back

SPEC SHEET + MEASUREMENTS

PORT AUTHORITY

Port Authority® Essential Rain Jacket. J407

PRODUCT MEASUREMENTS

| | XS | S | M | L | XL | 2XL | 3XL | 4XL |
|---------------------|--------|--------|--------|--------|--------|--------|--------|--------|
| Body Length at Back | 28 1/4 | 29 1/4 | 30 1/4 | 31 1/4 | 32 1/4 | 33 1/4 | 33 3/4 | 34 1/4 |
| Chest | 20 1/2 | 22 | 23 1/2 | 25 | 26 1/2 | 28 | 30 | 32 |
| Sleeve Length | 34 1/4 | 35 | 35 3/4 | 36 1/2 | 37 1/4 | 38 | 38 3/4 | 39 1/2 |

Body Length at Back: Measured from high point shoulder to finished hem at back.

Chest: Measured across the chest one inch below armhole when laid flat.

Sleeve Length: Start at center of neck and measure down shoulder, down sleeve to hem.

SIZE CHARTS

| | XS | S | M | L | XL | 2XL | 3XL | 4XL |
|-------|-------|-------|-------|-------|-------|-------|-------|-------|
| Chest | 32-34 | 35-37 | 38-40 | 41-43 | 44-46 | 47-49 | 50-53 | 54-57 |

HOW TO MEASURE



CHEST






Measure under the arm and around the fullest part of the chest with arms down, keeping tape horizontal.

SPEC SHEET + MEASUREMENTS

PORT AUTHORITY.

Port Authority® Essential Rain Jacket. J407

COLORS

| | | | | |
|-----------------------------------------------------------------------------------|-----------------------------------------------------------------------------------|-----------------------------------------------------------------------------------|-----------------------------------------------------------------------------------|-----------------------------------------------------------------------------------|
|  |  |  |  |  |
| Deep Black PMS BLACK C | Deep Red PMS 207C | Graphite PMS 432C | True Navy PMS 533C | True Royal PMS 7687C |