

SPEC SHEET + MEASUREMENTS



Carhartt® Midweight Hooded Sweatshirt. CTK121

Product photo



Sometimes Mother Nature can't make up her mind. This sweatshirt works perfectly as a layer or by itself, allowing you to adapt with the weather.

- 10.5-ounce, 50/50 cotton/poly blend or 59/41 cotton/poly blend (Black, Carbon Heather, Moss, New Navy)*
- 50/50 cotton/poly blend (Brite Lime, Brite Orange)
- 70/30 cotton/poly blend (Heather Grey)
- Attached three-piece hood with drawcord closure
- Front hand warmer pocket
- Stretchable, spandex-reinforced, rib knit cuffs and waistband
- Carhartt-strong, triple-stitched main seams
- Carhartt label sewn on hand warmer pocket
- Loose fit

**Please note: Select colors in Carhartt fleece are currently transitioning from a 50/50 cotton/poly blend to a 59/41 cotton/poly blend. Weight and fabric properties remain the same. Your order may contain a combination of both fabrics.*

CARE INSTRUCTIONS

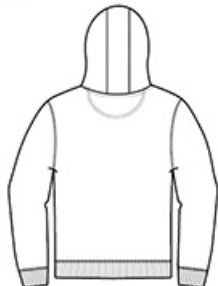
Machine wash cold like colors. Do not bleach. Tumble dry low.

Sketches



FRONT VIEW

front



BACK VIEW

back

SPEC SHEET + MEASUREMENTS



Carhartt® Midweight Hooded Sweatshirt. CTK121

PRODUCT MEASUREMENTS

	S	M	L	XL	2XL	3XL	4XL
Body Length at Back	28	29	29	30	30	31	31
Chest Width	22	24	26	28	30	32	34
Sleeve Length from Center Back	35 7/8	36 5/8	37 3/8	38 1/8	38 7/8	39 3/8	39 7/8

Body Length at Back: Measured from high point shoulder to finished hem at back.

Chest Width: Measured across the chest one inch below armhole when laid flat.

Sleeve Length from Center Back: Measure from Center Back neck to shoulder point to sleeve hem.

SIZE CHARTS

	S	M	L	XL	2XL	3XL	4XL
Chest	34-36	38-40	42-44	46-48	50-52	54-56	58-60

SPEC SHEET + MEASUREMENTS



Carhartt® Midweight Hooded Sweatshirt. CTK121

HOW TO MEASURE



CHEST WIDTH

Measure under the arm and around the fullest part of the chest with arms down, keeping tape horizontal.

COLORS



Black
PMS BLACK
C



Brite Lime
PMS NO
MATCH



Brite Orange
PMS NO
MATCH



Carbon
Heather
PMS 7540C



Heather Grey
PMS COOL
GREY 6C



Moss
PMS 7770C



New Navy
PMS 533C