

# SPEC SHEET + MEASUREMENTS

PORT AUTHORITY.

## Port Authority® Wearever Performance Pique Colorblock Polo. K247

### Product photo



All-day performance meets modern design in this comfortable, moisture-wicking polo.

Ideal for any uniforming occasion, this lightweight colorblock polo has a silky soft hand—plus, it's a great look at a great value.

- 4.4-ounce, 100% polyester pique
- Moisture-wicking
- Snag-resistant
- Anti-curl flat knit collar
- 3-button placket
- Dyed-to-match sandwich buttons
- Colorblock raglan sleeves
- Self-turned cuffs and hem
- Side vents
- Drop tail hem

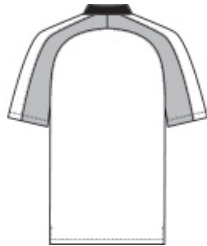
### CARE INSTRUCTIONS

Machine Wash Cold With Like Colors. Do Not Use Fabric Softener. Only Non-Chlorine Bleach When Needed. Tumble Dry Low. Remove Promptly. Cool Iron If Necessary.

### Sketches



front



back

# SPEC SHEET + MEASUREMENTS

PORT AUTHORITY

Port Authority® Wearever Performance Pique Colorblock Polo. K247

## PRODUCT MEASUREMENTS

	S	M	L	XL	2XL	3XL	4XL	
Body Length at Back	29	30	31	32	33	33 1/2	34	
Chest	19	20 1/2	22	23 1/2	25	26 1/2	28 1/2	30 1/2
Sleeve Length from Center Back	18	18 1/2	18 7/8	19 3/8	19 3/4	20 1/4	20 3/4	21 3/8

**Body Length at Back:** Measured from high point shoulder to finished hem at back.

**Chest:** Measured across the chest one inch below armhole when laid flat.

**Sleeve Length from Center Back:** Measure from Center Back neck to shoulder point to sleeve hem.

## SIZE CHARTS

	XS	S	M	L	XL	2XL	3XL	4XL
Chest	32-34	35-37	38-40	41-43	44-46	47-49	50-53	54-57

# SPEC SHEET + MEASUREMENTS

PORT AUTHORITY

Port Authority® Wearever Performance Pique Colorblock  
Polo. K247

## HOW TO MEASURE



### CHEST

Measure under the arm and around the fullest part of the chest with arms down, keeping tape horizontal.

## COLORS

				
Deep Black/ Rich Red PMS BLACK C	Deep Black/ Storm Grey PMS BLACK C	River Blue Navy/ Carolina Blue PMS 646C	Storm Grey/ Gusty Grey PMS 7540C	True Royal/ Black PMS 7687C