



## District® Women's Perfect Tri® Long Sleeve Tunic Tee. DT132L



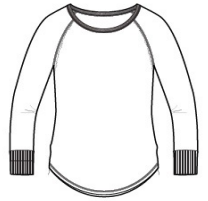
Long sleeve tunic version of our lightw eight and soft crew .

- 4.5-ounce, 50/25/25 poly/combed ring spun cotton/rayon, 32 singles
- Tear-aw ay label
- Raw edge detail at armholes
- Coverstitch details
- 1x1 Rib knit neck
- Rib knit elongated cuffs
- Longer tunic length
- Curved hem

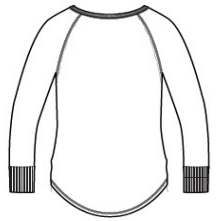
*Tri-Blend fabric infuses each garment with unique character. Please allow for slight color variations. Due to the heat sensitivity of tri-blend fabrics, special care must be taken throughout the printing process. Consult your decorator or ink supplier for best printing practices.*

### CARE INSTRUCTIONS

Machine w ash cold, w ith like colors. Only non-chlorine bleach. Tumble dry low . Warm iron if necessary.



front



back

### HOW TO MEASURE



#### BUST

Measure under the arm and around the fullest part of the bust with arms dow n, keeping tape horizontal.

### SIZE CHART

	XS	S	M	L	XL	XXL	3XL	4XL
Size	2	4/6	8/10	12/14	16/18	20/22	24/26	28/30
Bust	32-34	35-36	37-38	39-41	42-44	45-47	48-51	52-55

### COLOR INFORMATION

**Please note: PMS code information is shown only when an exact match is available.**



Black Frost  
PMS 426C



Blush Frost  
PMS 2341C



Grey Frost  
PMS COOL GREY  
11C



Navy Frost  
PMS 2379C



White