

# SPEC SHEET + MEASUREMENTS



## OGIO® Connection Full-Zip. OG706

### Product photo



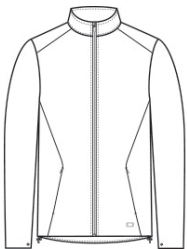
Sleek, modern and built for movement, this weather-resistant OGIO look easily takes you from home to the office to everywhere in-between.

- 92/8 poly/spandex with durable water-repellent (DWR) finish
- OGIO heat transfer label for tag-free comfort
- Waterproof center front zipper
- Articulated elbows
- Front pockets with hidden zippers for valuables or phone
- Black reflective taping down center back
- Black reflective O heat transfer on front left hem

### CARE INSTRUCTIONS

Machine Wash Cold. Do Not Use Fabric Softener. Non-Chlorine Bleach When Needed. Tumble Dry Low. Cool Iron If Necessary. Do Not Dry Clean.

### Sketches



front



back

# SPEC SHEET + MEASUREMENTS



OGIO® Connection Full-Zip. OG706

## PRODUCT MEASUREMENTS

	XS	S	M	L	XL	2XL	3XL	4XL
Body Length at Back	26 1/2	27 1/2	28 1/2	29 1/2	30 1/2	31 1/2	32	32 1/2
Chest Width	19	20 1/2	22	23 1/2	25	26 1/2	28 1/2	30 1/2
Sleeve Length from Center Back	34 3/4	35 1/2	36 1/4	37	37 3/4	38 1/2	39 1/4	40

**Body Length at Back:** Measured from high point shoulder to finished hem at back.

**Chest Width:** Measured across the chest one inch below armhole when laid flat.

**Sleeve Length from Center Back:** Measure from Center Back neck to shoulder point to sleeve hem.

## SIZE CHARTS

	XS	S	M	L	XL	2XL	3XL	4XL
Chest	32-34	35-37	38-40	41-43	44-46	47-49	50-53	54-57

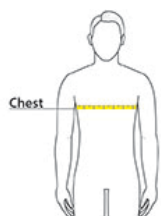
# SPEC SHEET + MEASUREMENTS



OGIO® Connection Full-Zip. OG706

## HOW TO MEASURE

---



### CHEST

Measure under the arm and around the fullest part of the chest with arms down, keeping tape horizontal.

## COLORS

---



Blacktop  
PMS Black C



Tarmac Grey  
PMS 7540C