

SPEC SHEET + MEASUREMENTS



New Era® Power Long Sleeve Hoodie. NEA229

Product photo



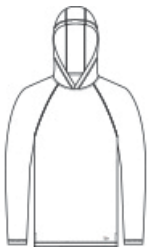
With moisture wicking and stretch, you'll feel the power of performance in this hoodie that's also brushed for comfort.

- 4.7-ounce, 91/9 polyester/spandex
- Debossed New Era neck taping
- Heat transfer label for tag-free comfort
- 3-panel hood
- Raglan sleeves
- Reflective silver heat transfer New Era flag logo on left hem

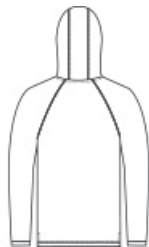
CARE INSTRUCTIONS

Machine Wash Cold With Like Colors. Do Not Use Fabric Softener. Only Non-Chlorine Bleach When Needed. Tumble Dry Low. Remove Promptly. Cool Iron If Necessary.

Sketches



front



back

SPEC SHEET + MEASUREMENTS



New Era® Power Long Sleeve Hoodie. NEA229

PRODUCT MEASUREMENTS

	XS	S	M	L	XL	2XL	3XL	4XL
Body Length at Back	26 1/2	27 1/2	28 1/2	29 1/2	30 1/2	31 1/2	32 1/4	33
Chest Width	18	19 1/2	21	22 1/2	24 1/2	26 1/2	29	32
Raglans and Dolmans Sleeve Length	33 1/4	34	34 3/4	35 1/2	36 1/4	37	37 3/4	38 1/2

Body Length at Back: Measured from high point shoulder to finished hem at back.

Chest Width: Measured across the chest one inch below armhole when laid flat.

Raglans and Dolmans Sleeve Length: Measure from neck edge to finished hem.

SIZE CHARTS

	XS	S	M	L	XL	2XL	3XL	4XL
Chest	32-34	35-37	38-40	41-43	44-47	48-51	52-56	57-61

SPEC SHEET + MEASUREMENTS



New Era® Power Long Sleeve Hoodie. NEA229

HOW TO MEASURE



CHEST

Measure under the arm and around the fullest part of the chest with arms down, keeping tape horizontal.

COLORS



Black
PMS BLACK
C



Shadow Grey
Heather
PMS COOL
GREY 10C



True Navy
PMS 533C