

SPEC SHEET + MEASUREMENTS

SPORT-TEK

Sport-Tek® Sport-Wick® Stretch 1/2-Zip Hoodie. ST856

Product photo



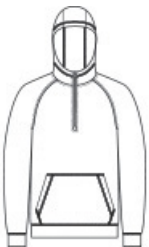
Rise to the occasion with this moisture-wicking 1/2-zip hoodie.

- 6.8-ounce, 90/10 poly/spandex
- Front pouch pocket
- Tag-free label

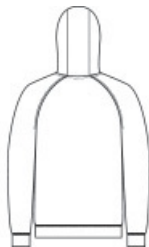
CARE INSTRUCTIONS

Machine Wash Cold With Like Colors. Do Not Use Fabric Softener. Do Not Bleach. Tumble Dry Low. Cool Iron If Necessary. Do Not Dry Clean.

Sketches



front



back

SPEC SHEET + MEASUREMENTS



Sport-Tek® Sport-Wick® Stretch 1/2-Zip Hoodie. ST856

PRODUCT MEASUREMENTS

	XS	S	M	L	XL	2XL	3XL	4XL
Body Length at Back	26	27	28	29	30	31	31 1/2	32
Chest Width	18 1/2	20	21 1/2	23	24 1/2	26	28	30
Raglans and Dolmans Sleeve Length	32 3/4	33 1/2	34 1/4	35	35 3/4	36 1/2	37 1/4	38

Body Length at Back: Measured from high point shoulder to finished hem at back.

Chest Width: Measured across the chest one inch below armhole when laid flat.

Raglans and Dolmans Sleeve Length: Measure from neck edge to finished hem.

SIZE CHARTS

	XS	S	M	L	XL	2XL	3XL	4XL
Chest	32-34	35-37	38-40	41-43	44-46	47-49	50-53	54-57

SPEC SHEET + MEASUREMENTS



Sport-Tek® Sport-Wick® Stretch 1/2-Zip Hoodie. ST856

HOW TO MEASURE



CHEST

Measure under the arm and around the fullest part of the chest with arms down, keeping tape horizontal.

COLORS



Black
PMS BLACK
C



Charcoal Grey
PMS NO
MATCH



Charcoal Grey
Heather
PMS NO
MATCH



True Navy
PMS 533C



True Royal
PMS 7687C