

SPEC SHEET + MEASUREMENTS



Russell Outdoors™ Realtree® Colorblock Performance

1/4-Zip. RU152

Product photo



This performance layer has a reverse coil zipper that also makes it a great office casual style. Moisture-wicking for hiking, camping and other outdoor adventures. Colorblock body provides ample decoration space for your branding to shine.

- 3.8-ounce, 100% polyester with moisture-wicking
- Tag-free label
- Realtree EDGE® print
- Reverse coil zipper
- Exterior woven Russell Outdoors™ tab at hem

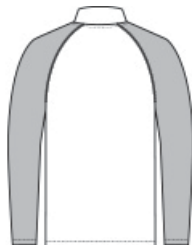
CARE INSTRUCTIONS

Machine Wash Cold With Like Colors. Do Not Use Fabric Softener. Do Not Bleach. Tumble Dry Low. Remove Promptly. Cool Iron If Needed.

Sketches



front



back

SPEC SHEET + MEASUREMENTS



Russell Outdoors™ Realtree® Colorblock Performance 1/4-Zip. RU152

PRODUCT MEASUREMENTS

	XS	S	M	L	XL	2XL	3XL	4XL
Body Length at Back	27	28	29	30	31	32	32 1/2	33
Chest Width	18 1/4	19 3/4	21 1/4	22 3/4	24 1/4	25 3/4	27 3/4	29 3/4
Raglans and Dolmans Sleeve Length	33	33 3/4	34 1/2	35 1/4	36	36 3/4	37 1/2	38 1/4

Body Length at Back: Measured from high point shoulder to finished hem at back.

Chest Width: Measured across the chest one inch below armhole when laid flat.

Raglans and Dolmans Sleeve Length: Measure from neck edge to finished hem.

SIZE CHARTS

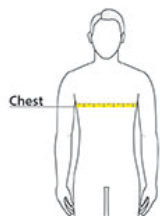
	XS	S	M	L	XL	2XL	3XL	4XL
Chest	32-34	35-37	38-40	41-43	44-46	47-49	50-53	54-57

SPEC SHEET + MEASUREMENTS



Russell Outdoors™ Realtree® Colorblock Performance
1/4-Zip. RU152

HOW TO MEASURE



CHEST

Measure under the arm and around the fullest part of the chest with arms down, keeping tape horizontal.

COLORS



Black/
Realtree Edge
PMS BLACK
C



Grey Concrete
Heather/
Realtree Edge
PMS COOL
GRAY 10C



Olive Drab
Green/
Realtree Edge
PMS 7771C