

SPEC SHEET + MEASUREMENTS

SPORT-TEK

Sport-Tek® Women's Colorblock Hooded Raglan Jacket. LST76

Product photo

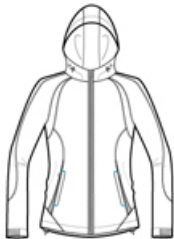


With a drawcord hood and enduring athletic style, this wind-resistant, water-repellent jacket is perfect for outdoor sports or everyday excursions.

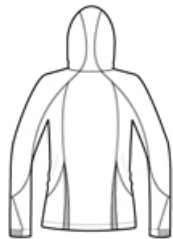
- 100% polyester shell
- 100% polyester jersey lining with mesh insets at gussets
- Tag-free label
- Three-panel hood with drawcord and toggle
- Front zippered pockets
- Half elastic, half self-fabric cuffs for comfort
- Decoration access pocket
- Drawcord hem with toggle

Please note: This product is transitioning from woven labels to tag-free labels. Your order may contain a combination of both labels.

Sketches



front



back

SPEC SHEET + MEASUREMENTS

SPORT-TEK

Sport-Tek® Women's Colorblock Hooded Raglan Jacket.
LST76

PRODUCT MEASUREMENTS

	XS	S	M	L	XL	XXL	3XL	4XL
Bust	19 1/2	20 1/2	21 1/2	23	24 1/2	26	28	30
Sleeve Length from Center Back	32 1/2	33	33 1/2	34 1/8	34 3/4	35 3/8	35 7/8	36 3/8
Body Length at Back	26	26 1/2	27	28	29	30	30 1/2	31

Bust: Measured across the chest one inch below armhole when laid flat.

Sleeve Length from Center Back: Measure from Center Back neck to shoulder point to sleeve hem.

Body Length at Back: Measured from high point shoulder to finished hem at back.

SIZE CHARTS

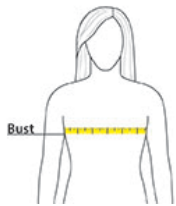
	XS	S	M	L	XL	XXL	3XL	4XL
Size	2	4/6	8/10	12/14	16/18	20/22	24/26	28/30
Bust	32-34	35-36	37-38	39-41	42-44	45-47	48-51	52-55

SPEC SHEET + MEASUREMENTS

SPORT-TEK

Sport-Tek® Women's Colorblock Hooded Raglan Jacket.
LST76

HOW TO MEASURE



BUST

Measure under the arm and around the fullest part of the bust with arms down, keeping tape horizontal.

COLORS



Black/ White
PMS BLACK
C



Forest Green/
White
PMS 553C



Maroon/ White
PMS 504C



True Navy/
White
PMS 533C



True Red/
White
PMS 200C



True Royal/
White
PMS 7687C