

SPEC SHEET + MEASUREMENTS



Mercer+Mettle® Women's Double-Knit Bomber. MM3001

Product photo



Smart, stylish and made for layering night or day, this double-knit jacket blends a sport-inspired shape with a casual-cool attitude. It offers all the traditional bomber design cues, like rib knit collar and cuffs, with a more style-forward, streamlined fit. **Fabric+Weight** • 8.3-ounce, 100% double-knit polyester

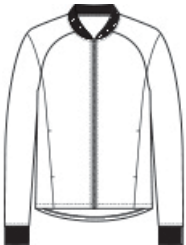
Features+Benefits • Easy care

- Rib knit collar and cuffs
- Exposed zipper with matte black pull
- Front pockets

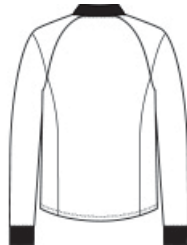
CARE INSTRUCTIONS

Turn Garment Inside Out. Machine Wash Cold With Like Colors. Do Not Use Fabric Softener. Do Not Bleach. Tumble Dry Low. Remove Promptly. Cool Iron. If Necessary.

Sketches



front



back

SPEC SHEET + MEASUREMENTS



Mercer+Mettle® Women's Double-Knit Bomber. MM3001

PRODUCT MEASUREMENTS

| | XS | S | M | L | XL | 2XL | 3XL | 4XL |
|----------------------|--------|--------|--------|--------|--------|--------|--------|--------|
| Size | 2 | 4/6 | 8/10 | 12/14 | 16/18 | 20/22 | 24/26 | 28/30 |
| Body Length at Back | 25 3/4 | 26 1/4 | 26 3/4 | 27 1/4 | 27 3/4 | 28 1/4 | 28 3/4 | 29 1/4 |
| Bust | 18 | 19 | 20 | 21 1/2 | 23 | 24 1/2 | 26 1/2 | 28 1/2 |
| Raglan Sleeve Length | 31 1/2 | 32 | 32 1/2 | 33 1/8 | 33 3/4 | 34 3/8 | 34 3/4 | 35 1/8 |

Body Length at Back: Measured from high point shoulder to finished hem at back.

Bust: Measured across the chest one inch below armhole when laid flat.

SIZE CHARTS

| | XS | S | M | L | XL | 2XL | 3XL | 4XL |
|------|-------|-------|-------|-------|-------|-------|-------|-------|
| Size | 2 | 4/6 | 8/10 | 12/14 | 16/18 | 20/22 | 24/26 | 28/30 |
| Bust | 32-34 | 35-36 | 37-38 | 39-41 | 42-44 | 45-47 | 48-51 | 52-55 |

SPEC SHEET + MEASUREMENTS



Mercer+Mettle® Women's Double-Knit Bomber. MM3001

HOW TO MEASURE



BUST

Measure under the arm and around the fullest part of the bust with arms down, keeping tape horizontal.

COLORS



Anchor Grey
PMS 426C



Deep Black
PMS BLACK
C



Night Navy
PMS 532C