

SPEC SHEET + MEASUREMENTS

SPORT-TEK

Sport-Tek® Sport-Wick® Stretch Contrast 1/4-Zip Pullover. ST854

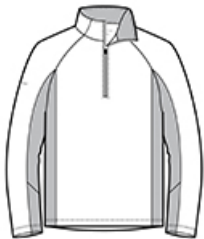
Product photo



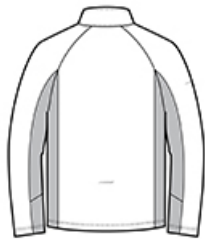
By mixing heather with a solid color and adding reflective hits, this moisture-wicking pullover has a technical look plus plenty of stretch for easy movement.

- 6.8-ounce, 90/10 poly/spandex jersey
- Soft-brushed backing
- Tag-free label
- Reflective details on right sleeve and lower back
- Cadet collar
- Reverse coil zipper
- Raglan sleeves
- Open cuffs and hem

Sketches



front



back

SPEC SHEET + MEASUREMENTS



Sport-Tek® Sport-Wick® Stretch Contrast 1/4-Zip Pullover. ST854

PRODUCT MEASUREMENTS

	XS	S	M	L	XL	2XL	3XL	4XL
Chest	20	21 1/2	23	24 1/2	26	27 1/2	29 1/2	31 1/2
Body Length at Back	27 1/2	28 1/2	29 1/2	30 1/2	31 1/2	32 1/2	33	33 1/2
Sleeve Length	33 3/4	34 1/2	35 1/4	36	36 3/4	37 1/2	38 1/4	39

Chest: Measured across the chest one inch below armhole when laid flat.

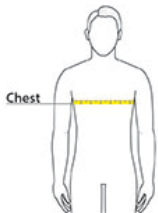
Body Length at Back: Measured from high point shoulder to finished hem at back.

Sleeve Length: Start at center of neck and measure down shoulder, down sleeve to hem.

SIZE CHARTS

	XS	S	M	L	XL	2XL	3XL	4XL
Chest	32-34	35-37	38-40	41-43	44-46	47-49	50-53	54-57

HOW TO MEASURE



CHEST

Measure under the arm and around the fullest part of the chest with arms down, keeping tape horizontal.

SPEC SHEET + MEASUREMENTS



Sport-Tek® Sport-Wick® Stretch Contrast 1/4-Zip Pullover.
ST854

COLORS



Black/
Charcoal Grey
Heather
PMS 426 C



Charcoal
Grey/
Charcoal Grey
Heather
PMS 7540 C



True Navy/
True Navy
Heather
PMS 533 C