

# SPEC SHEET + MEASUREMENTS

PORT AUTHORITY.

## Port Authority® Zephyr Full-Zip Jacket. J344

### Product photo



This Zephyr style merges wind- and water-resisting performance with a silky smooth hand. This unlined piece is easy to wear over base or thermal layers. Modern sleek details offer instant appeal at a very appealing price.

- 100% polyester
- Interior wind flap with chin guard
- Elastic binding at cuffs and hem
- Open front pockets

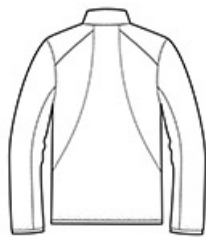
### CARE INSTRUCTIONS

Machine wash cold with like colors. Do not bleach or use fabric softener. Tumble dry low. Remove promptly. Do not iron. Do not dry clean.

### Sketches



front



back

# SPEC SHEET + MEASUREMENTS

PORT AUTHORITY

Port Authority® Zephyr Full-Zip Jacket. J344

## PRODUCT MEASUREMENTS

	XS	S	M	L	XL	2XL	3XL	4XL
Chest	20 1/2	22	23 1/2	25	26 1/2	28	30	32
Body Length at Back	25 1/2	26 1/2	27 1/2	28 1/2	29 1/2	30 1/2	31	31 1/2
Sleeve Length from Center Back	34 3/4	35 1/2	36 1/4	37	37 3/4	38 1/2	39 1/4	40

**Chest:** Measured across the chest one inch below armhole when laid flat.

**Body Length at Back:** Measured from high point shoulder to finished hem at back.

**Sleeve Length from Center Back:** Measure from Center Back neck to shoulder point to sleeve hem.

## SIZE CHARTS

	XS	S	M	L	XL	2XL	3XL	4XL
Chest	32-34	35-37	38-40	41-43	44-46	47-49	50-53	54-57

# SPEC SHEET + MEASUREMENTS

PORT AUTHORITY.

Port Authority® Zephyr Full-Zip Jacket. J344

## HOW TO MEASURE

---



### CHEST

Measure under the arm and around the fullest part of the chest with arms down, keeping tape horizontal.

## COLORS

---



Black  
PMS BLACK  
C



Dress Blue  
Navy  
PMS 533C



Grey Steel  
PMS 425C