

# SPEC SHEET + MEASUREMENTS

PORT AUTHORITY.

## Port Authority® Women's Puffer Jacket. L852

### Product photo



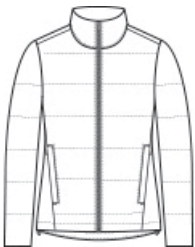
With wider baffles for a modern look, this water-resistant puffer looks cool while keeping you warm.

- 100% polyester shell and lining
- Molded center front zipper
- Interior storm flap
- Interior right chest pocket
- Zippered hand pockets
- Insulation method: 4.4-oz. polyfill
- Water protection method: water-repellent finish
- Port Pocket™ for decoration access
- Adjustable hem with locking drawcord

### CARE INSTRUCTIONS

Machine Wash Cold. Mild Detergent. Only Non-Chlorine Bleach When Needed. Tumble Dry Low. Cool Iron If Necessary. Do Not Dry Clean.

### Sketches



front



back

# SPEC SHEET + MEASUREMENTS

PORT AUTHORITY

Port Authority® Women's Puffer Jacket. L852

## PRODUCT MEASUREMENTS

	XS	S	M	L	XL	XXL	3XL	4XL
Size	2	4/6	8/10	12/14	16/18	20/22	24/26	28/30
Body Length at Back	26	26 1/2	27	27 1/2	28	28 1/2	29	29 1/2
Bust	19 1/2	20 1/2	21 1/2	23	24 1/2	26	28	30
Sleeve Length from Center Back	32 1/2	33	33 1/2	34 1/8	34 3/4	35 3/8	35 3/4	36 1/8

**Body Length at Back:** Measured from high point shoulder to finished hem at back.

**Bust:** Measured across the chest one inch below armhole when laid flat.

**Sleeve Length from Center Back:** Measure from Center Back neck to shoulder point to sleeve hem.

## SIZE CHARTS

	XS	S	M	L	XL	XXL	3XL	4XL
Size	2	4/6	8/10	12/14	16/18	20/22	24/26	28/30
Bust	32-34	35-36	37-38	39-41	42-44	45-47	48-51	52-55

# SPEC SHEET + MEASUREMENTS

PORT AUTHORITY.

Port Authority® Women's Puffer Jacket. L852

## HOW TO MEASURE

---



### BUST

Measure under the arm and around the fullest part of the bust with arms down, keeping tape horizontal.

## COLORS

---



Deep Black  
PMS BLACK  
C



Marshmallow  
PMS COOL  
GREY 1C



Shadow Grey  
PMS COOL  
GREY 10C