

# SPEC SHEET + MEASUREMENTS

PORT AUTHORITY.

Port Authority® Long Sleeve UV Daybreak Shirt. W960

## Product photo



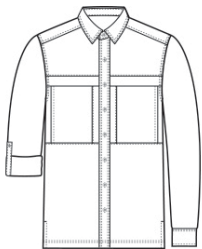
Sun and moisture are no problem for this versatile, lightweight, highly breathable shirt. Relaxed styling makes it perfect for outdoor or indoor wear.

- 2.2-ounce, 100% polyester poplin
- 2.5-ounce, 100% polyester poplin (White)
- Moisture-wicking
- UPF rating of 30
- Hidden button-down collar
- Dyed-to-match buttons
- Two chest pockets with concealment flaps and hook and loop closures
- Vented back panel with mesh ventilation
- Rounded adjustable cuffs
- Roll sleeves with button tabs
- Straight hem with side vents

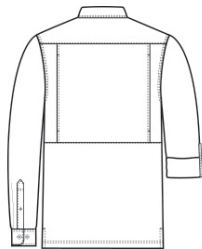
## CARE INSTRUCTIONS

Fabric & Mesh Trim: 100% Polyester. Fasten Closures. Hook & Loop Before Washing. Do Not Wring. Machine Wash Cold Gentle Cycle With Like Colors. Only Non-Chlorine Bleach If Needed. Fabric Softener Not Recommended. Tumble Dry Low. Remove Promptly.

## Sketches



front



back

# SPEC SHEET + MEASUREMENTS

PORT AUTHORITY

Port Authority® Long Sleeve UV Daybreak Shirt. W960

## PRODUCT MEASUREMENTS

	XS	S	M	L	XL	2XL	3XL	4XL
Body Length at Back	29	30	31	32	33	34	34 1/2	35
Chest	20	21 1/2	23	24 1/2	26	27 1/2	29 1/2	31 1/2
Sleeve Length from Center Back	33 3/4	34 1/2	35 1/4	36	36 3/4	37 1/2	38 1/4	39
Pocket Height	8 1/4	8 1/4	8 1/2	8 1/2	8 1/2	8 1/2	8 1/2	8 3/4
Pocket Width	6 3/8	6 3/8	6 5/8	6 5/8	6 5/8	6 5/8	6 5/8	6 7/8

**Body Length at Back:** Measured from high point shoulder to finished hem at back.

**Chest:** Measured across the chest one inch below armhole when laid flat.

**Sleeve Length from Center Back:** Measure from Center Back neck to shoulder point to sleeve hem.

**Pocket Height:** Measure from top to bottom at center.

**Pocket Width:** Measure from side to side at top edge.

# SPEC SHEET + MEASUREMENTS

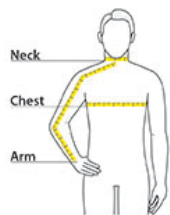
PORT AUTHORITY.

Port Authority® Long Sleeve UV Daybreak Shirt. W960

## SIZE CHARTS

	XS	S	M	L	XL	2XL	3XL	4XL
Chest	32-34	35-37	38-40	41-43	44-46	47-49	50-53	54-57
Neck	14 1/2 - 15	15 - 15 1/2	15 1/2 - 16	16 - 16 1/2	16 1/2 - 17	17 - 17 1/2	17 1/2 - 18	18 - 18 1/2
Arm	30 1/2	32	34	35	36 1/2	37 1/2	38 1/2	39 1/2

## HOW TO MEASURE



**Neck** Measure around the fullest part of the neck at the base.

**Chest Width** Measure under the arm and around the fullest part of the chest with arms down, keeping tape horizontal.

**Arm** Place hand on hip. Start at the center of the back of the neck and measure across the shoulder, to the elbow, and then down to the wrist.

## COLORS



Bright  
Seafoam  
PMS 564C



Deep Black  
PMS BLACK  
C



Gusty Grey  
PMS COOL  
GREY 8C



Light Blue  
PMS 644C



Oat



True Navy  
PMS 533C



White



Yellow  
PMS 600C