



## District® Women's Perfect Tri® Muscle Tank DT153

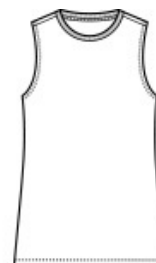


A relaxed body and low -cut armholes give this tank a modern twist on a throw back silhouette.

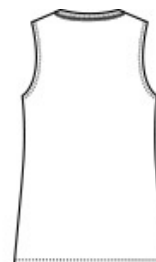
- 4.5-ounce, 50/25/25 poly/combed ring spun cotton/rayon, 32 singles
- 1x1 rib knit neck
- Double-needle stitching at armholes
- Side seamed
- Tear-away label

### CARE INSTRUCTIONS

Machine Wash Cold With Like Colors. Do Not Bleach. Tumble Dry Low. Cool Iron If Necessary.



front



back

### HOW TO MEASURE



#### BUST

Measure under the arm and around the fullest part of the bust with arms down, keeping tape horizontal.

### SIZE CHART

	XS	S	M	L	XL	XXL	3XL	4XL
Size	2	4/6	8/10	12/14	16/18	20/22	24/26	28/30
Bust	32-34	35-36	37-38	39-41	42-44	45-47	48-51	52-55

### COLOR INFORMATION

Please note: PMS code information is shown only when an exact match is available.



Black  
PMS BLACK C



Flint Blue Heather  
PMS 4136C



Heathered  
Charcoal  
PMS 7540C



Heathered Russet  
PMS 7609C



Ochre Yellow  
Heather  
PMS 7771C



White



Wisteria Heather