

## SPEC SHEET + MEASUREMENTS



### District® Featherweight French Terry™ Full-Zip Hoodie. DT573

#### Product photo



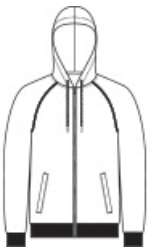
A soft hoodie with a laid-back vibe and the casual ease of French terry.

- 4.5-ounce, 70/30 combed ring spun cotton/poly French terry, 40 singles
- Unlined hood
- Dyed-to-match drawcords
- YKK Metaluxe™ zipper
- Raglan sleeves
- Front pockets
- 2x1 rib knit cuffs and hem
- Tear-away label

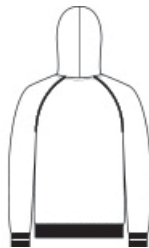
#### CARE INSTRUCTIONS

Machine Wash Cold With Like Colors. Do Not Bleach. Tumble Dry Low. Cool Iron If Necessary.

#### Sketches



front



back

# SPEC SHEET + MEASUREMENTS



District® Featherweight French Terry™ Full-Zip Hoodie.  
DT573

## PRODUCT MEASUREMENTS

	XS	S	M	L	XL	2XL	3XL	4XL
Body Length at Back	27	28	29	30	31	32	32 1/2	33
Chest Width	18	19 1/2	21	22 1/2	24	25 1/2	27 1/2	29 1/2
Raglans and Dolmans Sleeve Length	33 3/4	34 1/2	35 1/4	36	36 3/4	37 1/2	38 1/4	39

**Body Length at Back:** Measured from high point shoulder to finished hem at back.

**Chest Width:** Measured across the chest one inch below armhole when laid flat.

**Raglans and Dolmans Sleeve Length:** Measure from neck edge to finished hem.

## SIZE CHARTS

	XS	S	M	L	XL	2XL	3XL	4XL
Chest	32-34	35-37	38-40	41-43	44-46	47-49	50-53	54-57

## SPEC SHEET + MEASUREMENTS



District<sup>®</sup> Featherweight French Terry<sup>™</sup> Full-Zip Hoodie.  
DT573

### HOW TO MEASURE

---



#### CHEST

Measure under the arm and around the fullest part of the chest with arms down, keeping tape horizontal.

### COLORS

---



Black  
PMS BLACK  
C



Flint Blue  
Heather  
PMS 4138C



Light Heather  
Grey  
PMS COOL  
GRAY 8C



Washed Coal  
PMS NO  
MATCH