



Brooks Brothers® Women's Open-Neck Satin Blouse BB18009

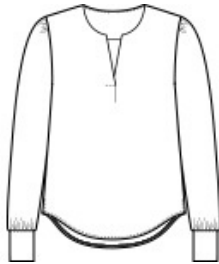


The soft satin fabric of this versatile blouse has a subtle sheen, lending an elegant look to any outfit. Designed for an easy fit to keep you feeling confident and comfortable.

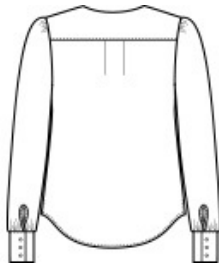
- 4.1-ounce, 100% polyester satin
- Anti-static finish
- Open v-neck popover
- Wide box pleat at back yoke
- Gathers at shoulders and cuffs
- Three self-fabric-covered buttons at cuffs
- Side vents

CARE INSTRUCTIONS

Machine Wash Cold With Like Colors. Do Not Bleach. Tumble Dry Low . Remove Promptly. Cool Iron If Necessary.



front



back

HOW TO MEASURE



BUST
Measure under the arm and around the fullest part of the bust with arms down n, keeping tape horizontal.

SIZE CHART

	XS	S	M	L	XL	2XL	3XL	4XL
Size	2	4/6	8/10	12/14	16/18	20/22	24/26	28/30
Bust	32-34	35-36	37-38	39-41	42-44	45-47	48-51	52-55

COLOR INFORMATION

Please note: PMS code information is shown only when an exact match is available.



Deep Black
PMS BLACK C



Heritage Blue
PMS 2708C



Night Navy
PMS 4280C



Shadow Grey
PMS COOL GRAY
10C