

SPEC SHEET + MEASUREMENTS



New Era® Venue Fleece Pullover Hoodie. NEA520

Product photo



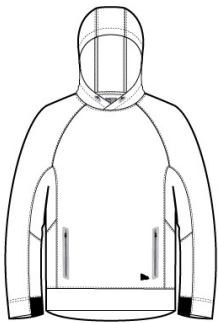
Perfect for most venues, this moisture-wicking fleece combines new-tech performance with old-school style.

- 6.2-ounce, 100% polyester fleece
- Embossed New Era neck taping
- Heat transfer label for tag-free comfort
- 3-panel hood with rubber stoppers and drawcords
- Raglan sleeves
- Welded zippered pockets
- 2x2 rib knit cuffs
- Embossed silicone New Era flag logo at hem

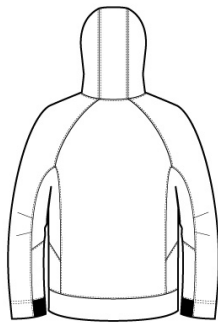
CARE INSTRUCTIONS

Machine wash cold with like colors; do not use fabric softener; tumble dry low; remove promptly; only non-chlorine bleach when needed; cool iron if necessary; do not dry clean.

Sketches



front



back

SPEC SHEET + MEASUREMENTS



New Era® Venue Fleece Pullover Hoodie. NEA520

PRODUCT MEASUREMENTS

	XS	S	M	L	XL	2XL	3XL	4XL
Body Length at Front	28	29	30	31	32	33	33 3/4	34 1/2
Chest Width	19 3/4	21 1/4	22 3/4	24 1/4	26 1/4	28 1/4	30 3/4	33 3/4
Sleeve Length	34 3/4	35 1/2	36 1/4	37	37 3/4	38 1/2	39 1/4	40

Body Length at Front: Measure from high point shoulder to lowest point of hem at front.

Chest Width: Measured across the chest one inch below armhole when laid flat.

Sleeve Length: Start at center of neck and measure down shoulder, down sleeve to hem.

SIZE CHARTS

	XS	S	M	L	XL	2XL	3XL	4XL
Chest	32-34	35-37	38-40	41-43	44-47	48-51	52-56	57-61

SPEC SHEET + MEASUREMENTS



New Era® Venue Fleece Pullover Hoodie. NEA520

HOW TO MEASURE



CHEST

Measure under the arm and around the fullest part of the chest with arms down, keeping tape horizontal.

COLORS



Black
PMS BLACK
C



Graphite
PMS 7540C



Royal
PMS 2757C



Shadow Grey
PMS COOL
GRAY 10C



True Navy
PMS 533C