

# SPEC SHEET + MEASUREMENTS

PORT AUTHORITY.

## Port Authority® Women's Crosshatch Easy Care Shirt. L640

### Product photo



With a beautiful two-color weave--not to mention wrinkle resistance--this poplin shirt has a pleasing texture and truly impresses in the office.

- 3-ounce, 60/40 cotton/poly
- Open collar and neckline
- Front and back darts
- Pearlized smoke buttons, pearlized white buttons on Chambray Blue, Navy Frost, and Pink Orchid
- Mitered two-button cuffs

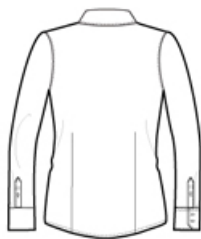
### CARE INSTRUCTIONS

MACHINE WASH COLD WITH LIKE COLORS, ONLY NON-CHLORINE BLEACH, TUMBLE DRY LOW, WARM IRON IF NEEDED

### Sketches



front



back

# SPEC SHEET + MEASUREMENTS

PORT AUTHORITY

Port Authority® Women's Crosshatch Easy Care Shirt.  
L640

## PRODUCT MEASUREMENTS

	XS	S	M	L	XL	XXL	3XL	4XL
Bust	18 1/2	19 1/2	20 1/2	22	23 1/2	25	27	29
Sleeve Length	31 1/2	32	32 1/2	33 1/8	33 3/4	34 3/8	34 3/4	35 1/8
Body Length at Back	26 1/2	27	27 1/2	28	28 1/2	29	29 1/2	30

- Bust:** Measured across the chest one inch below armhole when laid flat.
- Sleeve Length:** Start at center of neck and measure down shoulder, down sleeve to hem.
- Body Length at Back:** Measured from high point shoulder to finished hem at back.

## SIZE CHARTS

	XS	S	M	L	XL	XXL	3XL	4XL
Size	2	4/6	8/10	12/14	16/18	20/22	24/26	28/30
Bust	32-34	35-36	37-38	39-41	42-44	45-47	48-51	52-55
Arm	30 - 30 3/4	30 3/4 - 31 1/2	31 1/2 - 32	32 - 32 1/2	32 1/2 - 33	33 - 33 3/8	33 3/8 - 33 3/4	33 3/4 - 34 1/2

# SPEC SHEET + MEASUREMENTS

PORT AUTHORITY.

Port Authority® Women's Crosshatch Easy Care Shirt.  
L640

## HOW TO MEASURE

---



### BUST

Measure under the arm and around the fullest part of the bust with arms down, keeping tape horizontal.

## COLORS

---



Chambray  
Blue  
PMS 3584C



Deep Blue  
PMS 2380C



Soft Black  
PMS BLACK  
C